

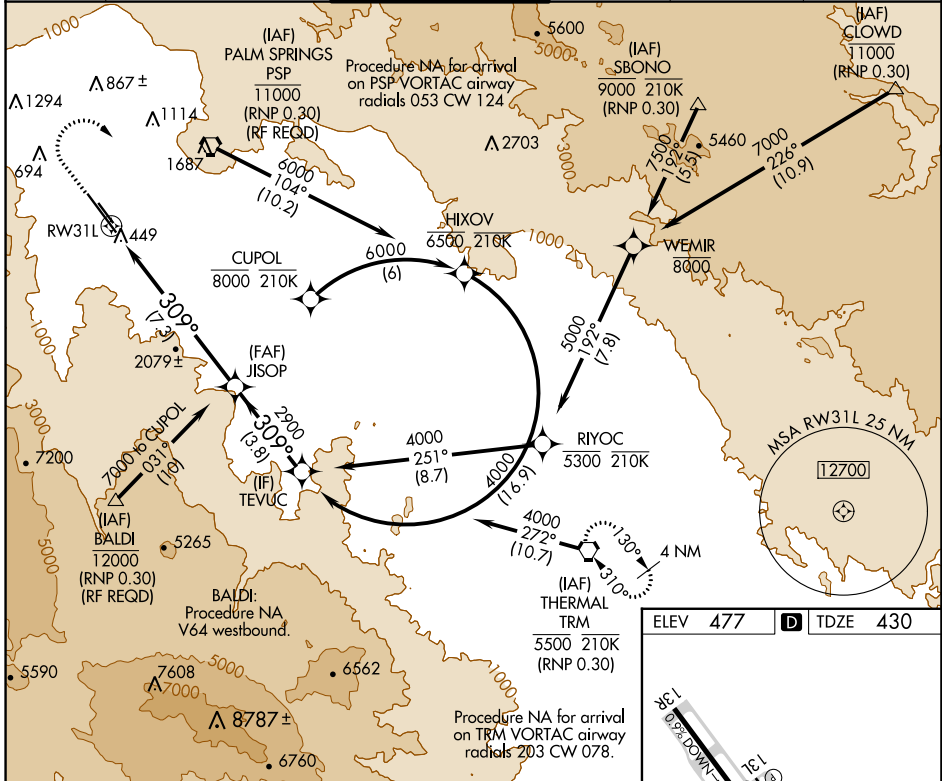
APP CRS	Rwy Idg	<b>8500</b>
<b>309°</b>	TDZE	<b>430</b>
	Apt Elev	<b>477</b>

# RNAV (RNP) Y RWY 31L

PALM SPRINGS INTL (PSP)

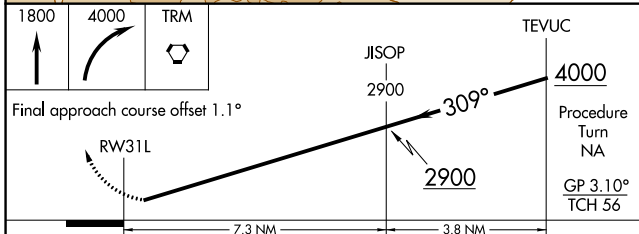
RNP AR APCH.		MISSED APPROACH: Climb to 1800, then climbing right turn to 4000 direct TRM VORTAC and hold.			
<p><b>▽</b> Missed approach requires minimum climb of 340' per NM to 3000. For uncompensated Baro-VNAV systems, procedure NA below 2°C or above 54°C.</p>					

ATIS	SOCAL APP CON	PALM SPRINGS TOWER*	GND CON	CLNC DEL	UNICOM
<b>124.65</b>	<b>126.7 370.95</b> <b>135.275 251.1</b>	<b>119.7 (CTAF) 0 377.05</b>	<b>121.9</b>	<b>128.35</b>	<b>122.95</b>



SW-3, 26 DEC 2024 to 23 JAN 2025

SW-3, 26 DEC 2024 to 23 JAN 2025



ELEV 477	<b>D</b> TDZE 430
----------	-------------------

HIRL Rwy 13R-31L  
MIRL Rwy 13L-31R  
REL Rwy 13R and 31L  
REL Rwy 13L and 31R

CATEGORY	A	B	C	D
RNP 0.30 DA	734-1 304 (300-1)			

## AUTHORIZATION REQUIRED