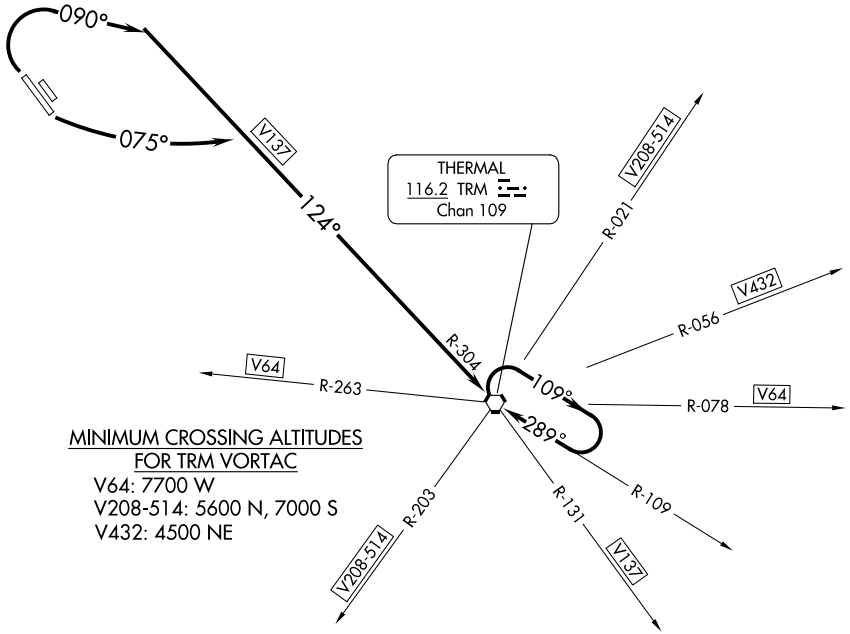


THERMAL SIX DEPARTURE

AL-545 (FAA)

PALM SPRINGS INTL (PSP)
PALM SPRINGS, CALIFORNIA

SOCAL DEP CON
126.7 370.95
135.275 251.1
ATIS
124.65
GND CON
121.9



**MINIMUM CROSSING ALTITUDES
FOR TRM VORTAC**
 V64: 7700 W
 V208-514: 5600 N, 7000 S
 V432: 4500 NE

TAKEOFF MINIMUMS

- Rwy 13L: Minimum climb of 440' per NM to 2300.
- Rwy 13R: Minimum climb of 422' per NM to 2300.
- Rwy 31L: Minimum climb of 386' per NM to 2700.
- Rwy 31R: Minimum climb of 405' per NM to 2700.

NOTE: Chart not to scale.



DEPARTURE ROUTE DESCRIPTION

TAKEOFF RUNWAYS 13L/R: Climbing left turn heading 075° to intercept TRM R-304 to TRM VORTAC. Thence

TAKEOFF RUNWAYS 31L/R: Climb heading 090° to intercept TRM R-304 to TRM VORTAC. Thence

. . . .If not at MEA/MCA at TRM VORTAC, climb in TRM holding pattern until reaching the MEA/MCA for assigned route of flight.

THERMAL SIX DEPARTURE

SW-3, 26 DEC 2024 to 23 JAN 2025

SW-3, 26 DEC 2024 to 23 JAN 2025