

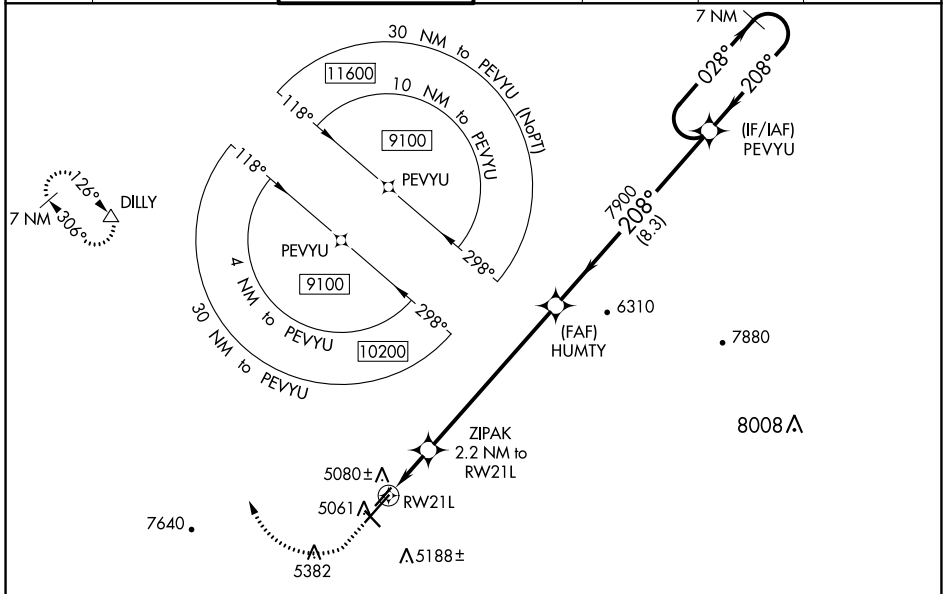
WAAS CH <b>40002</b> <b>W21A</b>	APP CRS <b>208°</b>	Rwy Idg TDZE Apt Elev	<b>7619</b> <b>4977</b> <b>5045</b>
--	------------------------	-----------------------------	---

# RNAV (GPS) RWY 21L

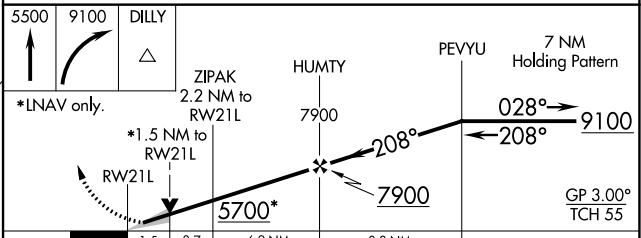
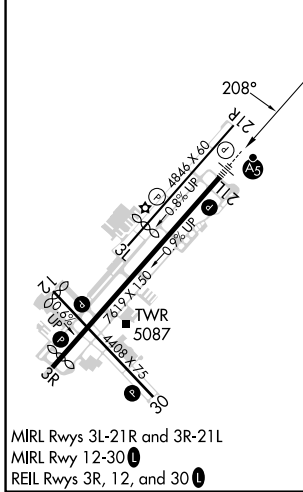
PRESCOTT RGNL/ERNEST A LOVE FLD (P.R.C)

RNP APCH - GPS.	<p>▼ For uncompensated Baro-VNAV systems, LNAV/VNAV NA below -11°C or above 47°C. For inoperative ALS, increase LPV all Cats visibility to 1 SM, LNAV/VNAV all Cats visibility to 1½ SM, and LNAV Cat C/D visibility to 1¾ SM. Circling Rwy 3L, 12, 30 NA at night. # Missed approach requires a minimum climb of 345 feet per NM to 7300.</p>	<p>MALSR</p>	<p>MISSED APPROACH: Climb to 5500 then climbing right turn to 9100 direct DILLY and hold, continue climb-in-hold to 9100.</p>
-----------------	--	--------------	---

ATIS <b>127.2</b>	PHOENIX APP CON <b>133.575 281.55</b>	PRESCOTT TOWER * <b>125.3 (CTAF) 257.9</b>	GND CON <b>121.7</b>	CLNC DEL <b>119.25</b>	<b>128.75 0</b>	UNICOM <b>122.95</b>
----------------------	--	---	-------------------------	---------------------------	-----------------	-------------------------



ELEV 5045	<b>D</b>	TDZE 4977
-----------	----------	-----------



CATEGORY	A	B	C	D
LPV DA	# 5177-½ 200 (200-½)			
LPV DA	5277-½ 300 (300-½)			
LNAV/VNAV DA	5391-¾ 414 (400-¾)			
LNAV MDA	5480-½ 503 (500-½)	5480-1 503 (500-1)		
<b>C</b> CIRCLING	5520-1 475 (500-1)	5760-1 715 (800-1)	6080-3 1035 (1100-3)	6680-3 1635 (1700-3)

PRESCOTT, ARIZONA  
Amdt 2D 19MAY22

PRESCOTT RGNL/ERNEST A LOVE FLD (P.R.C)  
34°39'N-112°25'W  
**RNAV (GPS) RWY 21L**

SW-4, 26 DEC 2024 to 23 JAN 2025

SW-4, 26 DEC 2024 to 23 JAN 2025