

(POAKE2.POAKE) 23334

POAKE TWO DEPARTURE

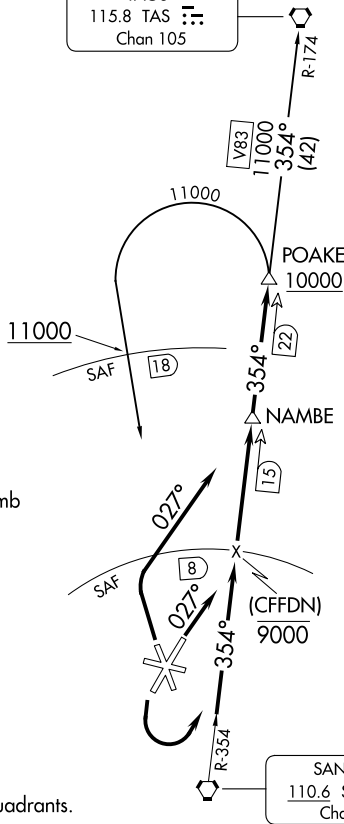
AL-548 (FAA)

SANTA FE RGNL (SAF)
SANTA FE, NEW MEXICO

ALBUQUERQUE CENTER
132.8 346.35
ATIS
128.55
GND CON
121.7
SANTA FE TOWER*
119.5 (CTAF) 239.3

TAOS
115.8 TAS : : :
Chan 105

**TOP ALTITUDE:
ASSIGNED by ATC**



TAKEOFF MINIMUMS

Rwy 2: Standard with minimum climb of 220' per NM to 7300.

Rwy 20, 30: Standard.

CAUTION: Mountainous terrain all quadrants.

NOTE: DME required.

NOTE: Chart not to scale.

DEPARTURE ROUTE DESCRIPTION

TAKEOFF RUNWAY 2: Climb heading 027° thence. . . .

TAKEOFF RUNWAY 20: Climbing left turn thence. . . .

TAKEOFF RUNWAY 33: Climbing right turn to heading 027° thence. . . .

. . . . Intercept and proceed on SAF R-354 to POAKE DME fix. Cross 8 DME ARC north of SAF VORTAC at or below 9000. Cross POAKE DME fix at or above 10000. Then on (transition) or (assigned route).

SANTA FE TRANSITION (POAKE2.SAF): From POAKE DME fix left turn direct SAF VORTAC. Cross 18 DME north of SAF VORTAC at/above 11000'.

TAOS TRANSITION (POAKE2.TAS): From POAKE DME fix via SAF R-354 and TAS R-174 to TAS VORTAC.

POAKE TWO DEPARTURE

(POAKE2.POAKE) 05JAN17

SANTA FE, NEW MEXICO
SANTA FE RGNL (SAF)

SW-1, 26 DEC 2024 to 23 JAN 2025

SW-1, 26 DEC 2024 to 23 JAN 2025