

(TAFOY3.TAFOY) 23334

TAFOY THREE DEPARTURE

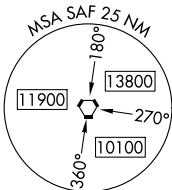
AL-548 (FAA)

SANTA FE RGNL (SAF)

SANTA FE, NEW MEXICO

**TOP ALTITUDE:
ASSIGNED BY ATC**

ALBUQUERQUE CENTER
132.8 346.35
ATIS
128.55
GND CON
121.7
SANTA FE TOWER *
119.5 239.3



FORT UNION
117.3 FTI
Chan 120

SANTA FE
110.6 SAF
Chan 43

TAKEOFF MINIMUMS

Rwys 15, 20, 33: Standard.
Rwy 2: Standard with minimum climb of
256' per NM to 8000.

CAUTION: Mountainous terrain all quadrants.

NOTE: Pilots must notify SAF air traffic control tower or
Albuquerque air route traffic control center prior
to flying this departure procedure.

NOTE: Chart not to scale.

TAFOY

ANTON CHICO
117.8 ACH
Chan 125

DEPARTURE ROUTE DESCRIPTION

TAKEOFF RUNWAY 2: Climbing left turn direct SAF VORTAC, then on SAF VORTAC R-104 to TAFOY, thence. . . .

TAKEOFF RUNWAY 15: Climb on heading 159° direct SAF VORTAC, then on SAF VORTAC R-104 to TAFOY, thence. . . .

TAKEOFF RUNWAY 20: Climbing left turn on heading 160° to intercept SAF VORTAC R-284 to SAF VORTAC, then on SAF VORTAC R-104 to TAFOY, thence. . . .

TAKEOFF RUNWAY 33: Climbing right turn direct SAF VORTAC, then on SAF VORTAC R-104 to TAFOY, thence. . . .

. . . . on assigned transition. Maintain ATC assigned altitude. Expect further clearance to filed altitude ten minutes after departure.

ANTON CHICO TRANSITION (TAFOY3.ACH): From over TAFOY on ACH R-285 to ACH VORTAC.

FORT UNION TRANSITION (TAFOY3.FTI): From over TAFOY on FTI R-215 to FTI VORTAC.

TAFOY THREE DEPARTURE

(TAFOY3.TAFOY) 15JUN23

SANTA FE, NEW MEXICO
SANTA FE RGNL (SAF)

SW-1, 26 DEC 2024 to 23 JAN 2025

SW-1, 26 DEC 2024 to 23 JAN 2025