

VORTAC SAF 110.6 Chan 43	APP CRS 332°	Rwy Idg TDZE Apt Elev 6316 6305 6349
---------------------------------------	------------------------	--

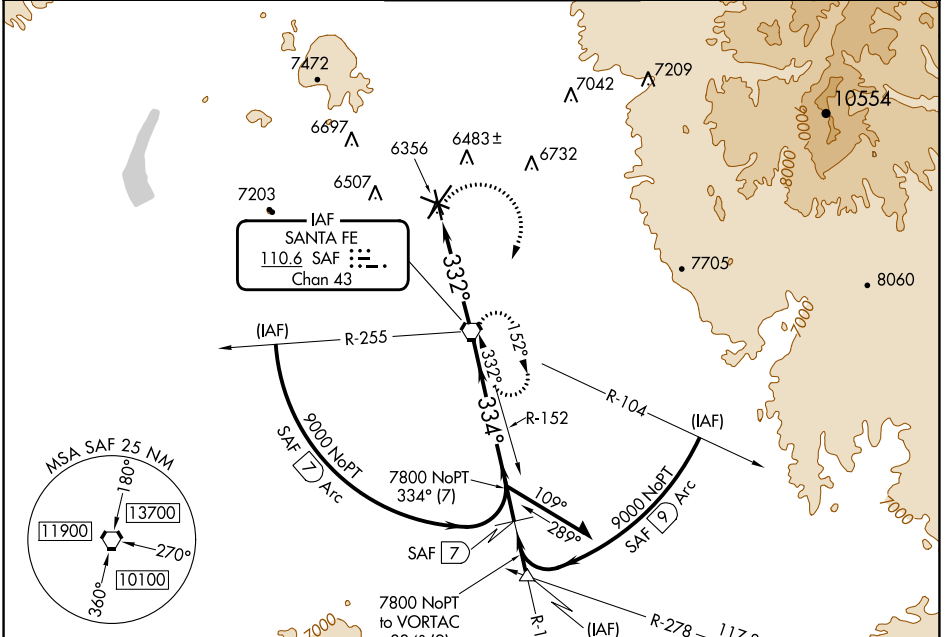
VOR RWY 33

SANTA FE RGNL (SAF)

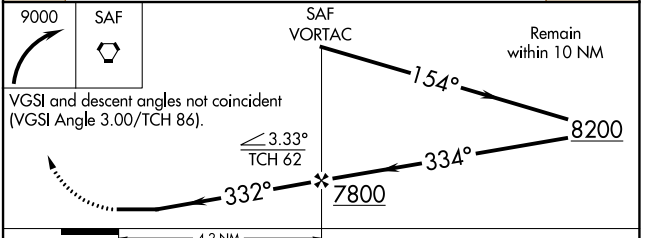
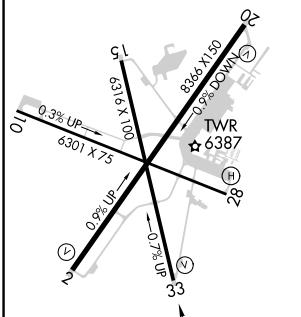
⚠ When Control Tower closed, obtain local altimeter setting on unicom; when not received, use Los Alamos altimeter setting: increase all MDAs 160 feet and S-33 visibility Cat C/D ½ SM.

MISSED APPROACH: Climbing right turn to 9000 direct SAF VORTAC and hold, continue climb-in-hold to 9000.

ATIS 128.55	ALBUQUERQUE CENTER 132.8 346.35	SANTA FE TOWER★ 119.5 (CTAF) 239.3	GND CON 121.7	UNICOM 122.95
-----------------------	---	--	-------------------------	-------------------------



ELEV 6349	D	TDZE 6305
REIL Rwy 10, 15, 20 and 33		
MIRL Rwy 2-20 and 15-33		



FAF to MAP 4.2 NM								
Knots	60	90	120	150	180			
Min:Sec	4:12	2:48	2:06	1:41	1:24			
CATEGORY	A		B		C		D	
S-33	6720-1		415 (400-1)		6720-1¼		415 (400-1¼)	
CIRCLING	6840-1		6920-1		7340-3		7660-3	
	491 (500-1)		571 (600-1)		991 (1000-3)		1311 (1400-3)	

SW-1, 26 DEC 2024 to 23 JAN 2025

SW-1, 26 DEC 2024 to 23 JAN 2025