

VORTAC SAF 110.6 Chan 43	APP CRS 158°	Rwy Idg TDZE Apt Elev N/A N/A 6349
---------------------------------------	------------------------	--

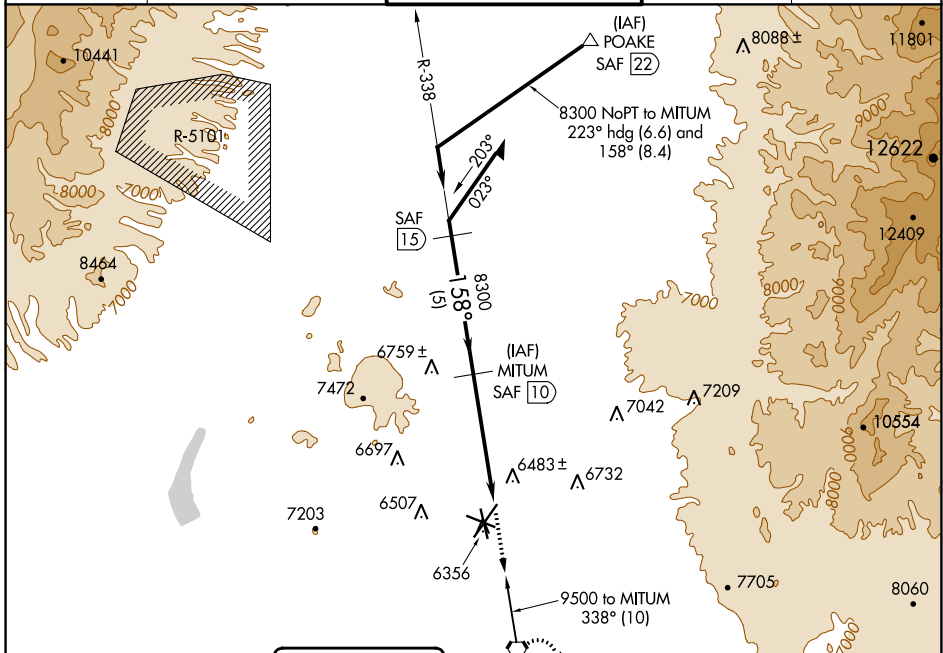
VOR/DME-A

SANTA FE RGNL (SAF)

⚠ When control tower closed, obtain local altimeter setting on UNICOM; when not received, use Los Alamos altimeter setting: increase all MDAs 160 feet.

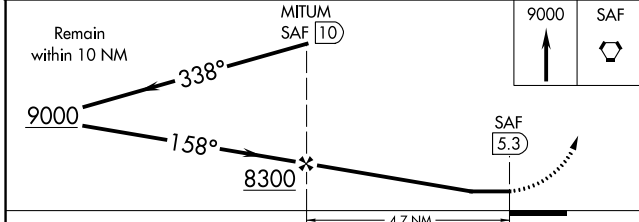
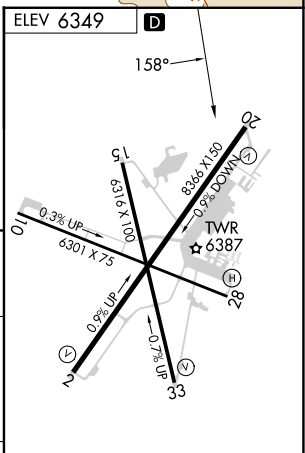
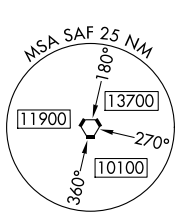
⚠ MISSED APPROACH: Climb to 9000 direct SAF VORTAC and hold, continue climb-in-hold to 9000.

ATIS 128.55	ALBUQUERQUE CENTER 132.8 346.35	SANTA FE TOWER ★ 119.5 (CTAF) 239.3	GND CON 121.7	UNICOM 122.95
-----------------------	---	---	-------------------------	-------------------------



SW-1, 26 DEC 2024 to 23 JAN 2025

SW-1, 26 DEC 2024 to 23 JAN 2025



CATEGORY	A	B	C	D	REIL Rwy 10, 15, 20 and 33 MIRL Rwy 2-20 and 15-33
CIRCLING	6960-1	611 (700-1)	7340-3 991 (1000-3)	7660-3 1311 (1400-3)	