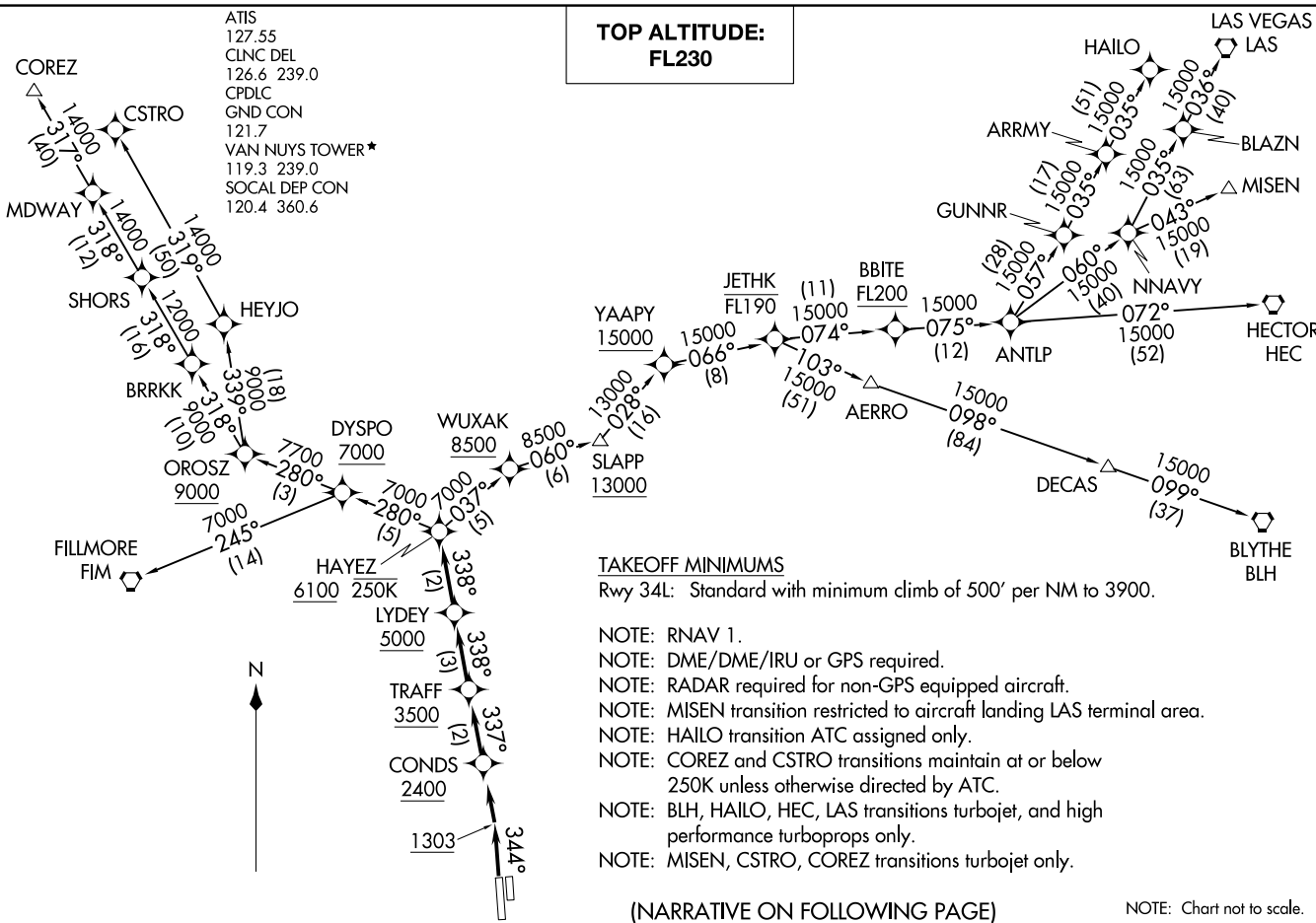


**TOP ALTITUDE:
FL230**

ATIS
127.55
CLINC DEL
126.6 239.0
CPDLC
GND CON
121.7
VAN NUYS TOWER*
119.3 239.0
SOCAL DEP CON
120.4 360.6

HAYEZ NINE DEPARTURE (RNAV)
(HAYEZ9 HAYEZ) 10SEF20



TAKEOFF MINIMUMS

Rwy 34L: Standard with minimum climb of 500' per NM to 3900.

- NOTE: RNAV 1.
- NOTE: DME/DME/IRU or GPS required.
- NOTE: RADAR required for non-GPS equipped aircraft.
- NOTE: MISEN transition restricted to aircraft landing LAS terminal area.
- NOTE: HAILO transition ATC assigned only.
- NOTE: COREZ and CSTRO transitions maintain at or below 250K unless otherwise directed by ATC.
- NOTE: BLH, HAILO, HEC, LAS transitions turbojet, and high performance turboprops only.
- NOTE: MISEN, CSTRO, COREZ transitions turbojet only.

(NARRATIVE ON FOLLOWING PAGE)

NOTE: Chart not to scale.

(HAYEZ9 HAYEZ) 20254
HAYEZ NINE DEPARTURE (RNAV)

AL-552 (FAA)

VAN NUYS (VTNT)
VAN NUYS, CALIFORNIA

VAN NUYS, CALIFORNIA
VAN NUYS (VTNT)



DEPARTURE ROUTE DESCRIPTION

TAKEOFF RUNWAY 34L: Climb on heading 344° to 1303, then climb direct to cross CONDS at or above 2400, then on track 337° to cross TRAFF at or above 3500, then on track 338° to cross LYDEY at or above 5000, then on track 338° to cross HAYEZ at or above 6100 and at or below 250K, thence

. . . . on (transition) maintain FL230. Expect filed altitude ten minutes after departure.

BLYTHE TRANSITION (HAYEZ9.BLH)

COREZ TRANSITION (HAYEZ9.COREZ)

CSTRO TRANSITION (HAYEZ9.CSTRO)

FILLMORE TRANSITION (HAYEZ9.FIM)

HAILO TRANSITION (HAYEZ9.HAILO)

HECTOR TRANSITION (HAYEZ9.HEC)

LAS VEGAS TRANSITION (HAYEZ9.LAS)

MISEN TRANSITION (HAYEZ9.MISEN)

SW-3, 26 DEC 2024 to 23 JAN 2025

SW-3, 26 DEC 2024 to 23 JAN 2025