

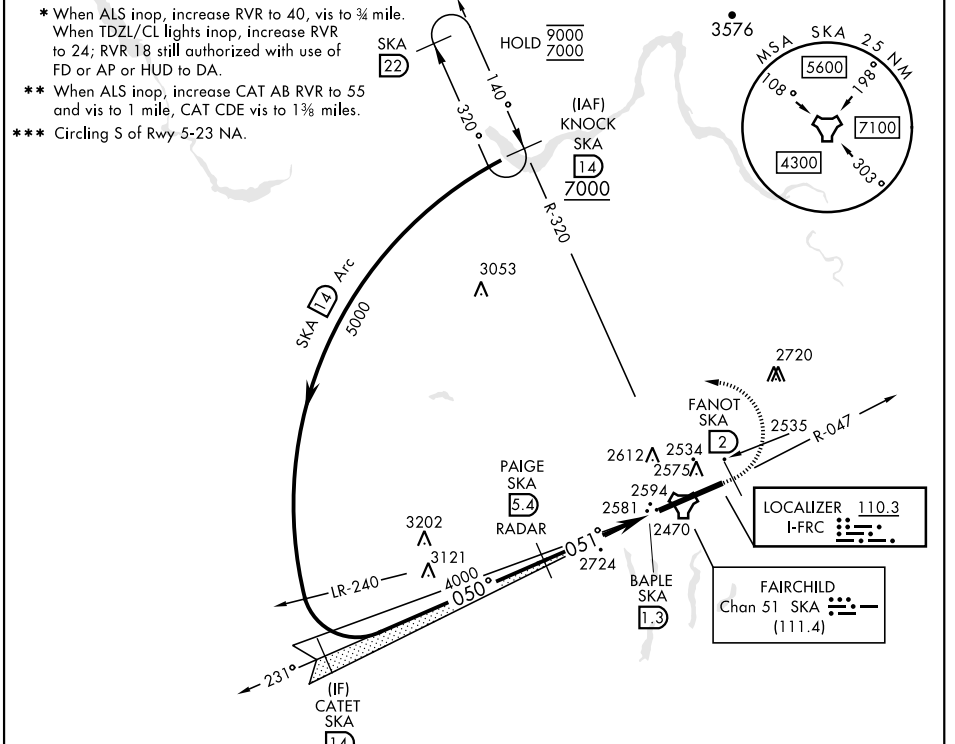
SPOKANE, WASHINGTON

# ILS or LOC RWY 5

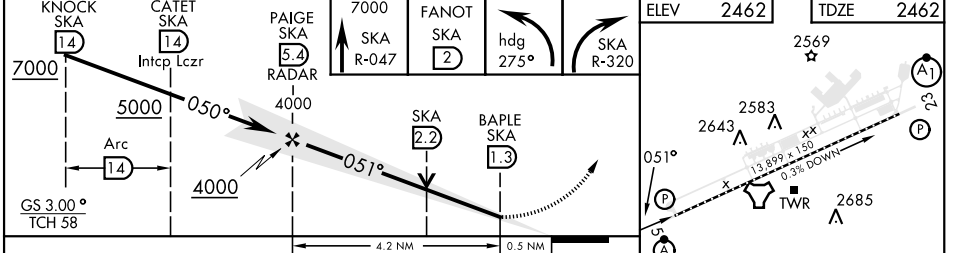
LOC I-FRC <b>110.3</b>	APCH CRS <b>051°</b>	Rwy Idg <b>13,899</b> TDZE <b>2462</b> Arpt Elev <b>2462</b>	[USAF]	FAIRCHILD AFB (KSKA)
---------------------------	-------------------------	--	--------	----------------------

DME or RADAR reqrd for LOC. RADAR reqrd for KNOCK holding. ALSF-2 MISSED APPROACH: Climb to 7000 via SKA TACAN R-047. At FANOT turn left hdg 275° to intcp SKA R-320 to KNOCK and hold, cont climb in hold to 7000.

ATIS <b>257.625</b>	SPOKANE APP CON <b>123.75 282.25</b> (208° - 028°) <b>133.35 263.0</b> (029° - 207°)	TOWER <b>120.35 233.7</b>	GND CON <b>123.6 275.8</b>
------------------------	--	------------------------------	-------------------------------



EMERG SAFE ALT 100 NM 10,900



ELEV	2462	TDZE	2462		
CATEGORY	A	B	C	D	E
S-ILS 5*	2662/18		200	(200-½)	
S-LOC 5**	2960/24 498 (500-½)		2960/50 498 (500-1)		
*** CIRCLING	2960-1 498 (500-1)		3040-1½ 578 (600-1½)	3040-2 578 (600-2)	3600-3 1138 (1200-3)
HIRL Rwy 5-23 TDZL/CL Rwy 5					
FAF to MAP 4.2 NM					
Knots	60	90	120	150	180
Min:Sec	4:12	2:48	2:06	1:41	1:24

SPOKANE, WASHINGTON 47°37'N-117°39'W FAIRCHILD AFB (KSKA)

Amtd 6 03NOV22

# ILS or LOC RWY 5

NW-1, 26 DEC 2024 to 23 JAN 2025

NW-1, 26 DEC 2024 to 23 JAN 2025