

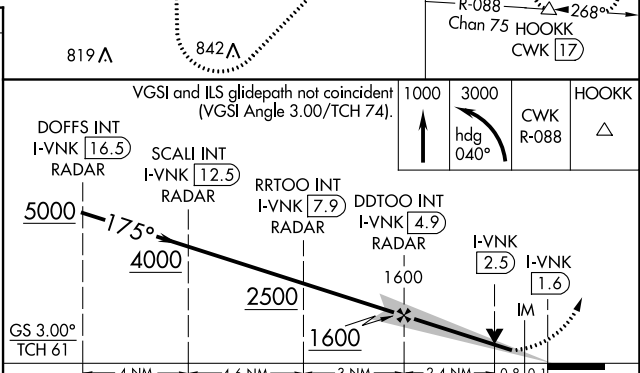
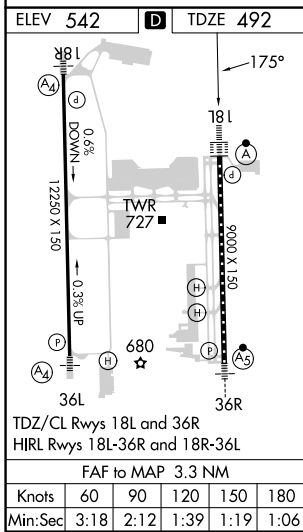
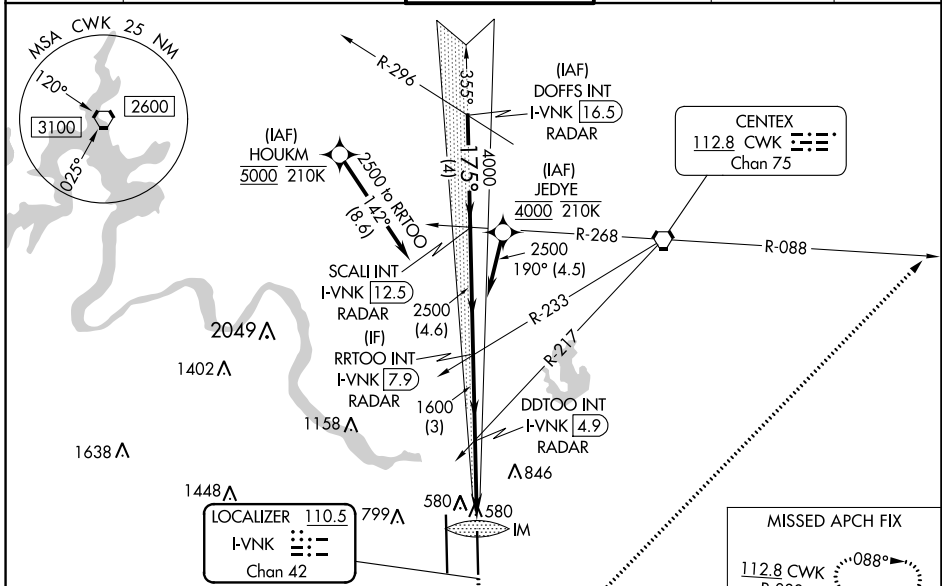
LOC/DME I-VNKG 110.5 Chan 42	APP CRS 175°	Rwy Idg 9000 TDZE 492 Apt Elev 542
--	------------------------	---

ILS or LOC RWY 18L

AUSTIN-BERGSTROM INTL (AUS)

RNP APCH-GPS. From HOUKM or JEDYE.	ALSIF-2 	MISSED APPROACH: Climb to 1000 then climbing left turn to 3000 on heading 040° and CWK VORTAC R-088 to HOOKK/CWK 17 DME and hold.
RADAR required for procedure entry from DOFFS. DME required.		
Simultaneous approach authorized. For inop ALS, increase S-ILS-18L Cat E visibility to RVR 4000, and S-LOC-18L Cats C, D, and E visibility to RVR 5500.		

D-ATIS 124.4	AUSTIN APP CON 127.225 317.65 (EAST) 120.875 270.25 (SOUTH) 119.0 370.85 (WEST)	AUSTIN TOWER 121.0 281.5	GND CON 121.9 348.6	CLNC DEL 125.5 263.0	CPDLC
------------------------	---	------------------------------------	-------------------------------	--------------------------------	-------



VGSI and ILS glidepath not coincident (VGSI Angle 3.00/TCH 74).	1000	3000	HOOKK		
	hdg 040°	CWK R-088	△		
CATEGORY	A	B	C	D	E
S-ILS 18L	692/18 200 (200-½)				
S-LOC 18L	840/24	348 (300-½)	840/30	348 (300-¾)	
CIRCLING	1040-1 498 (500-1)	1120-1 578 (600-1)	1200-1¾ 658 (700-1¾)	1200-2 658 (700-2)	NA

SC-3, 26 DEC 2024 to 23 JAN 2025

SC-3, 26 DEC 2024 to 23 JAN 2025