

RNAV (RNP) Z RWY 18L

AUSTIN-BERGSTROM INTL (AUS)

| | | |
|-------------|----------|-------------|
| APP CRS | Rwy Idg | 9000 |
| 175° | TDZE | 492 |
| | Apt Elev | 542 |

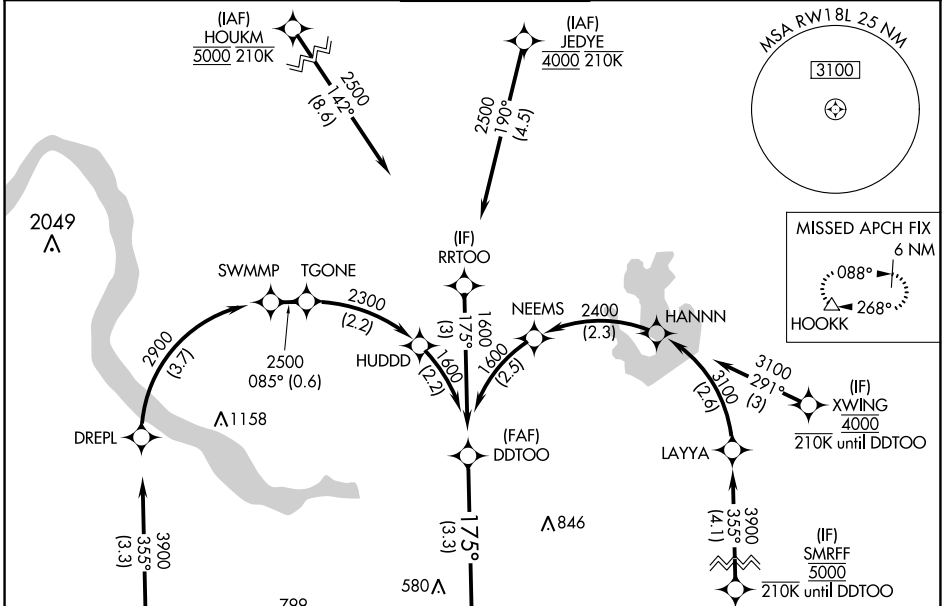
RADAR required. RNP AR APCH-GPS.

Simultaneous approach authorized. For uncompensated Baro-VNAV systems, procedure NA below -5°C or above 54°C.

ALSF-2

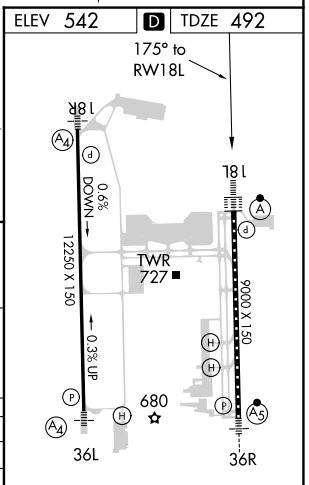
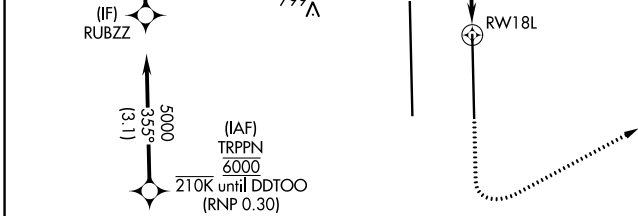
MISSED APPROACH: Climb to 1000 then climbing left turn to 3000 direct HOOKK and hold.

| | | | | | |
|--------------|---|--------------------|--------------------|--------------------|-------|
| D-ATIS | AUSTIN APP CON | AUSTIN TOWER | GND CON | CLNC DEL | CPDLC |
| 124.4 | 127.225 317.65 (EAST) 120.875 270.25 (SOUTH) 119.0 370.85 (WEST) | 121.0 281.5 | 121.9 348.6 | 125.5 263.0 | |



SC-3, 26 DEC 2024 to 23 JAN 2025

SC-3, 26 DEC 2024 to 23 JAN 2025



| | | | | |
|-----------------|--|------|------|-------|
| DDTOO | VGSi and RNAV glidepath not coincident (VGSi Angle 3.00/TCH 74). | | | |
| 1600 | 1600 | 1000 | 3000 | HOOKK |
| GP 3.00° TCH 61 | | | | |
| | | | | |
| | | | | |
| | | | | |

| | | | | |
|-------------|---|--------|---------------|---|
| CATEGORY | A | B | C | D |
| RNP 0.24 DA | | 825/26 | 333 (300-1/2) | |
| RNP 0.30 DA | | 885/35 | 393 (400-3/8) | |

AUTHORIZATION REQUIRED