

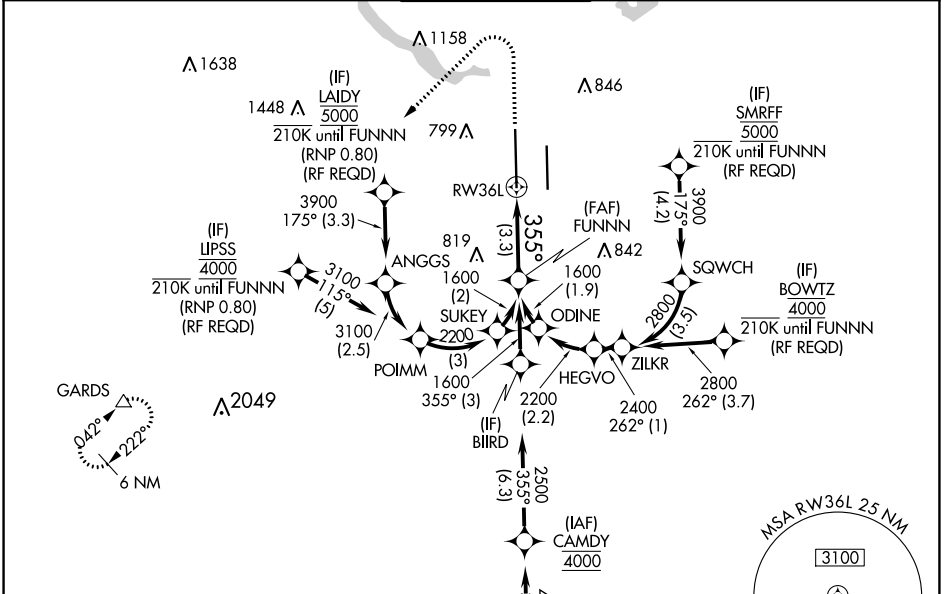
RNAV (RNP) Z RWY 36L

AUSTIN-BERGSTROM INTL (AUS)

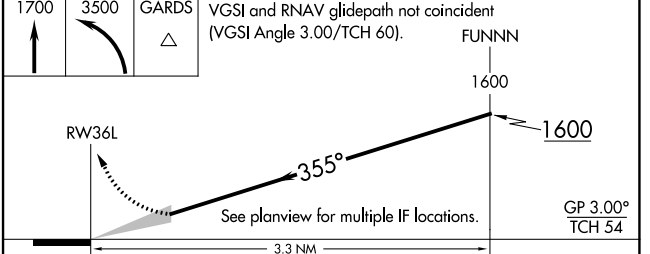
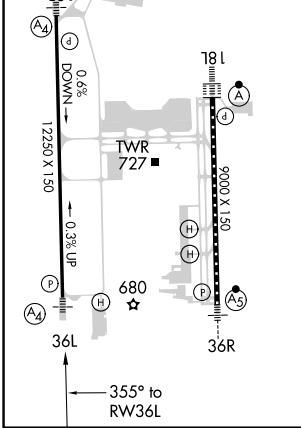
| | | |
|-------------|----------|--------------|
| APP CRS | Rwy Idg | 12250 |
| 355° | TDZE | 496 |
| | Apt Elev | 542 |

| | | | |
|--|--|------|---|
| RNP AR APCH. RADAR required. | | MALS | MISSED APPROACH: Climb to 1700 then climbing left turn to 3500 direct GARDS and hold. |
| <p>▼ Simultaneous approach authorized. For uncompensated Baro-VNAV systems, procedure NA below -5°C or above 54°C. For inop ALS, increase RNP 0.11 all Cats visibility to RVR 4500 and RNP 0.30 all Cats visibility to RVR 5500.</p> | | | |

| | | | | | |
|--------------|---|--------------------|--------------------|--------------------|-------|
| D-ATIS | AUSTIN APP CON | AUSTIN TOWER | GND CON | CLNC DEL | CPDLC |
| 124.4 | 127.225 317.65 (EAST) 120.875 270.25 (SOUTH) 119.0 370.85 (WEST) | 121.0 281.5 | 121.9 348.6 | 125.5 263.0 | |



| | | | | |
|--|------------|----------|------|------------|
| ELEV | 542 | D | TDZE | 496 |
| HIRL Rwy 18L-36R and 18R-36L TDZ/CL Rwy 18L and 36R | | | | |



| CATEGORY | A | B | C | D |
|-------------|---|--------|-------------|---|
| RNP 0.11 DA | | 758/40 | 262 (300-¾) | |
| RNP 0.30 DA | | 858/40 | 362 (400-¾) | |

AUTHORIZATION REQUIRED

SC-3, 26 DEC 2024 to 23 JAN 2025

SC-3, 26 DEC 2024 to 23 JAN 2025