

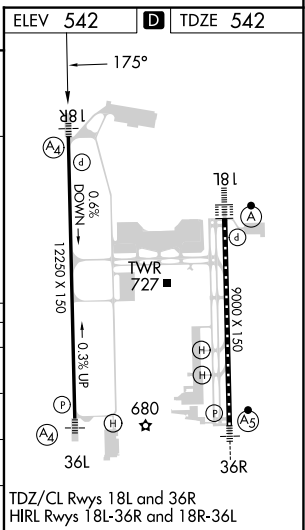
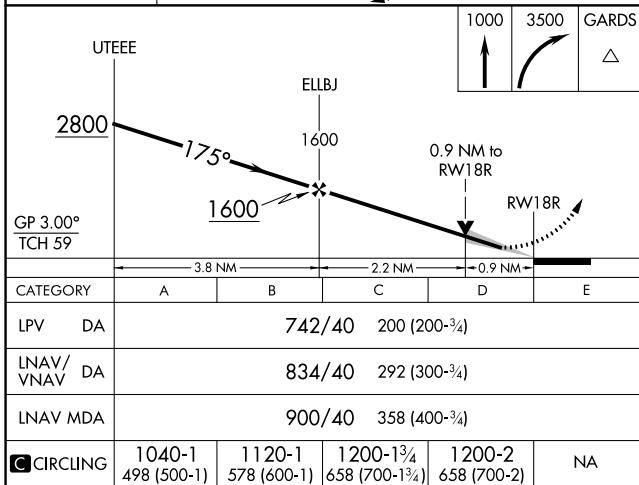
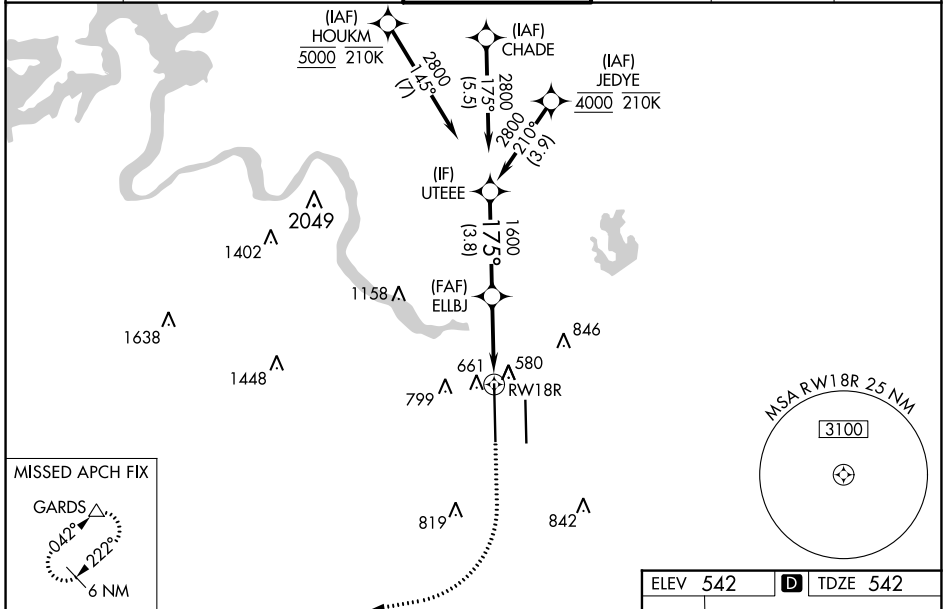
|  |                        |  |
|--|------------------------|--|
| WAAS<br>CH <b>77530</b><br><b>W18B</b> | APP CRS<br><b>175°</b> | Rwy Idg <b>12250</b><br>TDZE <b>542</b><br>Apt Elev <b>542</b> |
|--|------------------------|--|

# RNAV (GPS) Y RWY 18R

AUSTIN-BERGSTROM INTL (AUS)

|   |      |  |
|---|------|--|
| RNP APCH-GPS.   | MALS | MISSED APPROACH: Climb to 1000 then climbing right turn to 3500 direct GARDS and hold. |
| <p>Simultaneous approach authorized. LNAV procedure NA during simultaneous operations. For uncompensated Baro-VNAV systems, LNAV/VNAV NA below -5°C or above 54°C. Use of FD or AP required during simultaneous operations. Inop table does not apply to LPV. For inop ALS, increase LNAV/VNAV all Cats visibility to RVR 4500; increase LNAV Cat E visibility to RVR 5500.</p> |      |  |

|                        |   |                                    |                               |                                |       |
|------------------------|---|------------------------------------|-------------------------------|--------------------------------|-------|
| D-ATIS<br><b>124.4</b> | AUSTIN APP CON<br><b>127.225 317.65</b> (EAST)<br><b>120.875 270.25</b> (SOUTH)<br><b>119.0 370.85</b> (WEST) | AUSTIN TOWER<br><b>121.0 281.5</b> | GND CON<br><b>121.9 348.6</b> | CLNC DEL<br><b>125.5 263.0</b> | CPDLC |
|------------------------|---|------------------------------------|-------------------------------|--------------------------------|-------|



SC-3, 26 DEC 2024 to 23 JAN 2025

SC-3, 26 DEC 2024 to 23 JAN 2025