

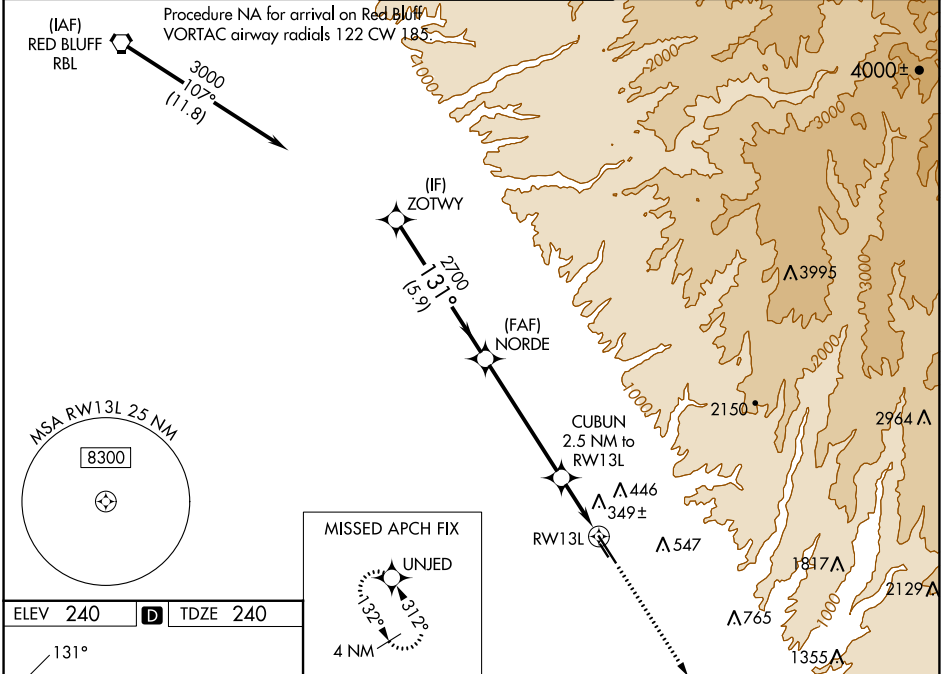
WAAS CH <b>65912</b> <b>W13A</b>	APP CRS <b>131°</b>	Rwy Idg <b>6724</b> TDZE <b>240</b> Apt Elev <b>240</b>
----------------------------------------	------------------------	---------------------------------------------------------------

# RNAV (GPS) RWY 13L

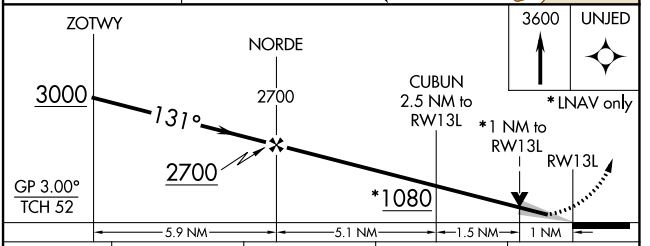
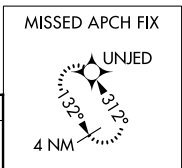
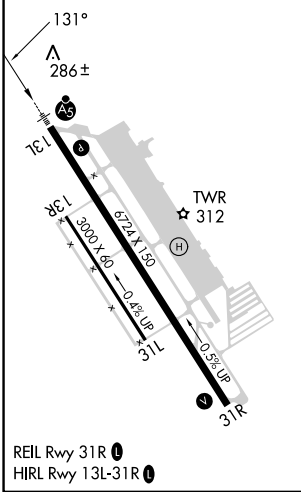
CHICO RGNL (CIC)

RNP APCH.	MALSRS 	MISSED APPROACH: Climb to 3600 direct UNJED and hold, continue climb-in-hold to 3600.
<p><b>⚠</b> Circling NA east of Rwy 13L-31R. For uncompensated Baro-VNAV systems, LNAV/VNAV NA below -15°C or above 54°C. For inop ALS, increase LNAV/VNAV all Cats visibility to 7/8 SM, and increase LNAV Cats C/D visibility to 1 SM.</p>		

ATIS <b>119.675</b>	OAKLAND CENTER <b>132.2 350.3</b>	CHICO TOWER* <b>121.0 (CTAF) 0 239.3</b>	GND CON <b>121.9</b>	UNICOM <b>122.95</b>
------------------------	--------------------------------------	---------------------------------------------	-------------------------	-------------------------



ELEV <b>240</b>	<b>D</b>	TDZE <b>240</b>
-----------------	----------	-----------------



CATEGORY	A	B	C	D
LPV DA		440-1/2	200 (200-1/2)	
LNAV/VNAV DA		530-1/2	290 (300-1/2)	
LNAV MDA	600-1/2	360 (400-1/2)	600-5/8	360 (400-5/8)
<b>C</b> CIRCLING	640-1 400 (400-1)	700-1 460 (500-1)	700-1 1/2 460 (500-1 1/2)	800-2 560 (600-2)

SW-2, 26 DEC 2024 to 23 JAN 2025

SW-2, 26 DEC 2024 to 23 JAN 2025