

WAAS CH <b>82101</b> <b>W05A</b>	APP CRS <b>049°</b>	Rwy Idg <b>5580</b> TDZE <b>12</b> Apt Elev <b>13</b>
--	------------------------	---

# RNAV (GPS) RWY 5

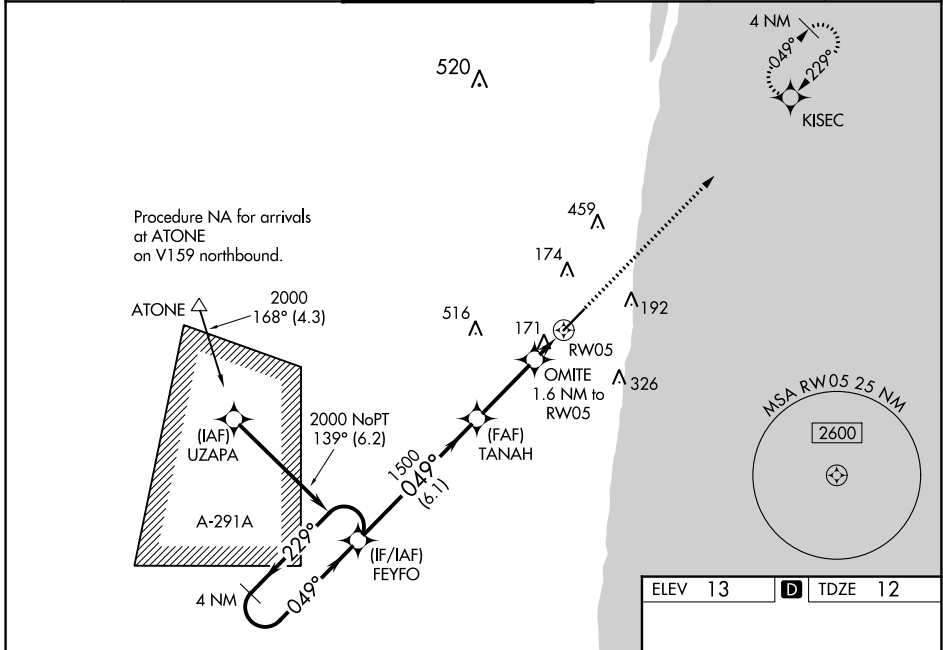
BOCA RATON (BCT)

RNP APCH-GPS.

▼ Baro-VNAV NA when using Palm Beach Intl altimeter setting. For uncompensated Baro-VNAV systems, LNAV/VNAV NA below -15°C or above 54°C. When local altimeter setting not received, use Palm Beach Intl altimeter setting: increase LPV DA to 326 feet; increase LNAV/VNAV DA to 501 feet; increase all MDAs 60 feet and visibility LNAV Cats C and D 1/4 SM and Circling Cats C and D 1/4 SM. In minimum visibility conditions bright lights on highway 1/4 mile north of airport may be mistaken for runway lights. Rwy 3 helicopter visibility reduction below 3/4 SM NA.

MISSED APPROACH: Climb to 2000 direct KISEC and hold.

AWOS-3 <b>121.125</b>	PALM BEACH APP CON <b>127.35 343.6</b>	BOCA RATON TOWER ★ <b>118.425 (CTAF) 0</b>	GND CON <b>121.8</b>	CLNC DEL <b>121.8</b>	GCO <b>127.35</b>
--------------------------	---	---	-------------------------	--------------------------	----------------------

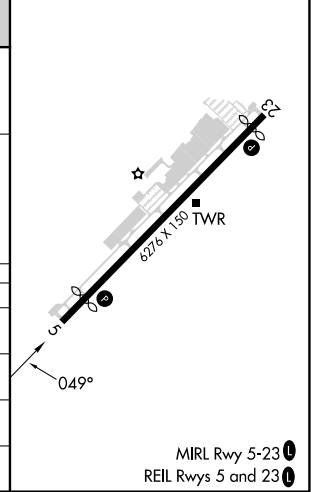


SE-3, 26 DEC 2024 to 23 JAN 2025

SE-3, 26 DEC 2024 to 23 JAN 2025

ELEV 13	<b>D</b> TDZE 12
---------	------------------

4 NM Holding Pattern		VGSI and RNAV glidepath not coincident (VGSI Angle 3.25/TCH 46).		2000	KISEC
← 229° / 049° →		FEYFO		↑	✧
GP 3.00°		TANAH	OMITE		
TCH 40		1500	1500	1.6 NM to RW05	
		6.1 NM	3 NM	1.6 NM	
CATEGORY	A	B	C	D	
LPV DA		283-7/8	271 (300-7/8)		
LNAV/VNAV DA		458-13/8	446 (500-13/8)		
LNAV MDA	440-1	428 (500-1)	440-1 1/4	428 (500-1 1/4)	
<b>C</b> CIRCLING	680-1	667 (700-1)	680-1 1/4 667 (700-1 1/4)	880-2 3/4 867 (900-2 3/4)	



MIRL Rwy 5-23 0  
REIL Rws 5 and 23 0