

CAMP SPRINGS, MARYLAND

ILS or LOC RWY 1R


LOC I-VJM 110.5	APCH CRS 010°	Rwy Idg 9756	TDZE 265	Arprt Elev 280
---------------------------	-------------------------	------------------------	--------------------	--------------------------

AL-561 (USAF)

JOINT BASE ANDREWS (KADW)

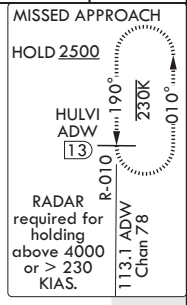
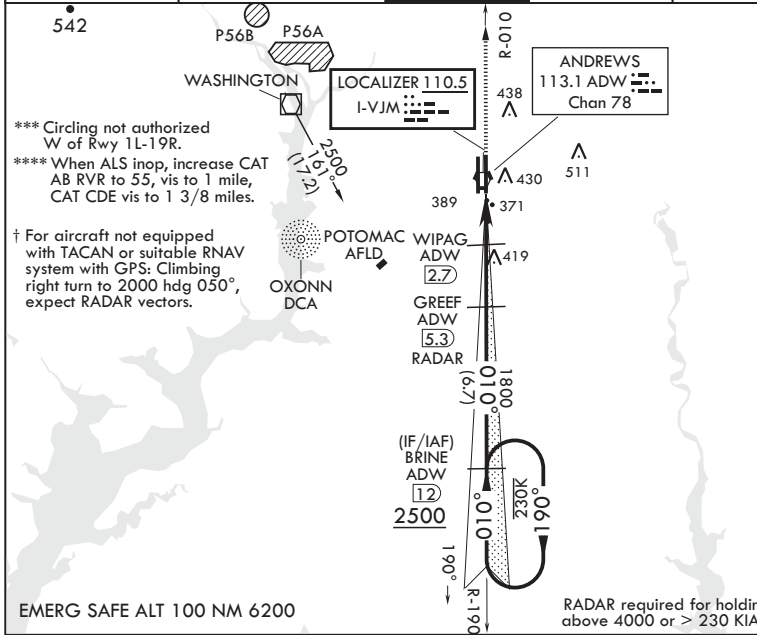
RADAR required
RADAR or DME required at FAF.

⚠ * When ALS inop, increase RVR to 40, vis to 3/4 mile. RVR 18 authorized with use of Flight Director System or Autopilot System or Heads-Up-Display to DA.
** When ALS inop, increase RVR to 35, vis to 1 mile.

ALS-F1 

† MISSED APPROACH. Climb to 2500 via ADW VORTAC R-010 to HULVI/ADW 13 DME and hold.

ATIS 133.675 251.05	POTOMAC APP CON 128.0 335.5	TOWER 118.4 349.0	GND CON 121.8 275.8	CLNC DEL 127.55 285.475	CPDLC
-------------------------------	---------------------------------------	-----------------------------	-------------------------------	-----------------------------------	-------

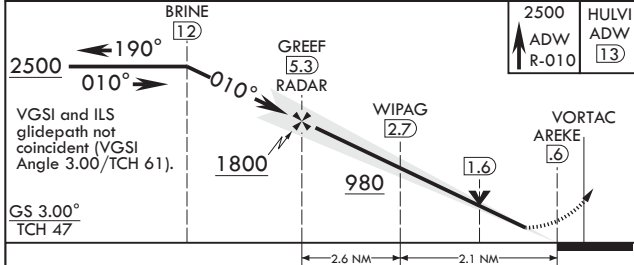
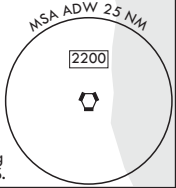


*** Circling not authorized W of Rwy 1L-19R.
**** When ALS inop, increase CAT AB RVR to 55, vis to 1 mile, CAT CDE vis to 1 3/8 miles.

† For aircraft not equipped with TACAN or suitable RNAV system with GPS: Climbing right turn to 2000 hdg 050°, expect RADAR vectors.

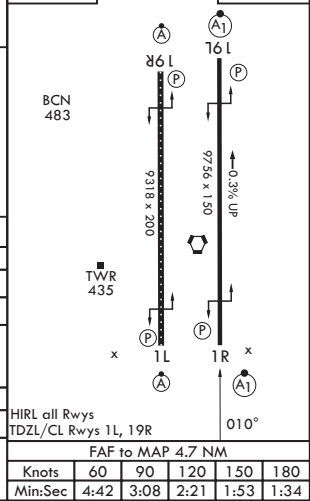
EMERG SAFE ALT 100 NM 6200

RADAR required for holding above 4000 or > 230 KIAS.



ELEV 280	TDZE 265
----------	----------

CATEGORY	A	B	C	D	E
S-ILS 1R*	465/24 200 (200-½)				
S-LOC 1R**	640/24 375 (400-½)		640/35 375 (400-¾)		
C CIRCLING***	780-1 500 (500-1)		780-1½ 500 (500-1½)		840-2 560 (600-2)
NON-DME					
S-LOC 1R****	720/24 455 (500-½)		720/45 455 (500-¾)		
C CIRCLING***	780-1 500 (500-1)		780-1½ 500 (500-1½)		840-2 560 (600-2)



HIRL all Rwys
TDZL/CL Rwys 1L, 19R

FAF to MAP 4.7 NM					
Knots	60	90	120	150	180
Min:Sec	4:42	3:08	2:21	1:53	1:34

CAMP SPRINGS, MARYLAND

38°49'N - 76°52'W

JOINT BASE ANDREWS (KADW)

Amdt 1 18MAY23

ILS or LOC RWY 1R

NE-3, 26 DEC 2024 to 23 JAN 2025

NE-3, 26 DEC 2024 to 23 JAN 2025