

24305

# JEFNSN TWO DEPARTURE (RNAV) (JEFNSN2.JEFNSN)

JOINT BASE ANDREWS (KADW)  
CAMP SPRINGS, MARYLAND

ATIS 133.675 251.05  
CPDLC  
GND CON 121.8 275.8  
ANDREWS TOWER 118.4 349.0  
POTOMAC DEP CON 118.95 254.35

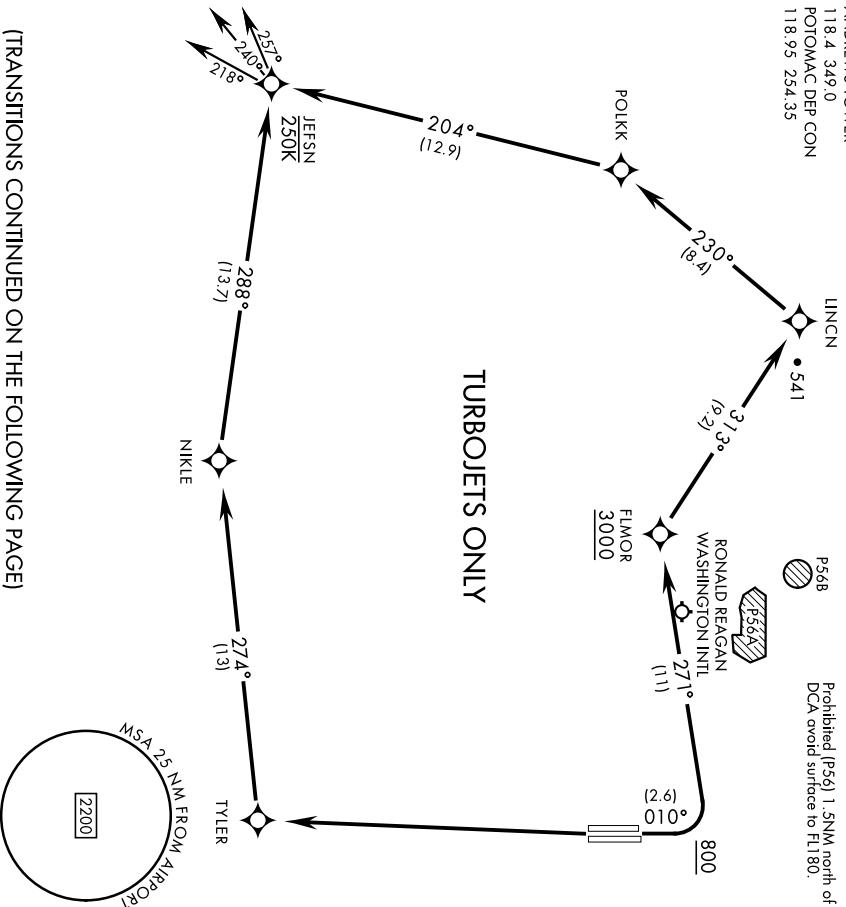
RNAV1-GPS [USAF]  
RADAR required

(Page 1 of 2)

**TOP ALTITUDE:**

**3000**

Max 250 KIAS until JEFNSN  
Prohibited (P56) 1.5NM north of  
DCA avoid surface to FL800.



(TRANSITIONS CONTINUED ON THE FOLLOWING PAGE)

## DEPARTURE ROUTE DESCRIPTION

**TAKEOFF RWY 1L/R:** Climb on heading 010° to 800, then climbing left turn to 3000 direct FLMOR. Then via depicted route to JEFNSN, hence...

**TAKEOFF RWY 19L/R:** Climb direct TYLER then via depicted route to JEFNSN, hence...

... on assigned transition. Maintain 3000, expect further clearance to filed alt within ten (10) minutes after departure.

- FLASK TRANSITION (JEFNSN2.FLASK)
- GLANC TRANSITION (JEFNSN2.GLANC)
- MAULS TRANSITION (JEFNSN2.MAULS)
- MELTN TRANSITION (JEFNSN2.MELTN)
- RRSIN TRANSITION (JEFNSN2.RRSIN)

# JEFNSN TWO DEPARTURE (RNAV) (JEFNSN2.JEFNSN)

Orig 31OCT24

CAMP SPRINGS, MARYLAND  
JOINT BASE ANDREWS (KADW)

TOP ALTITUDE:

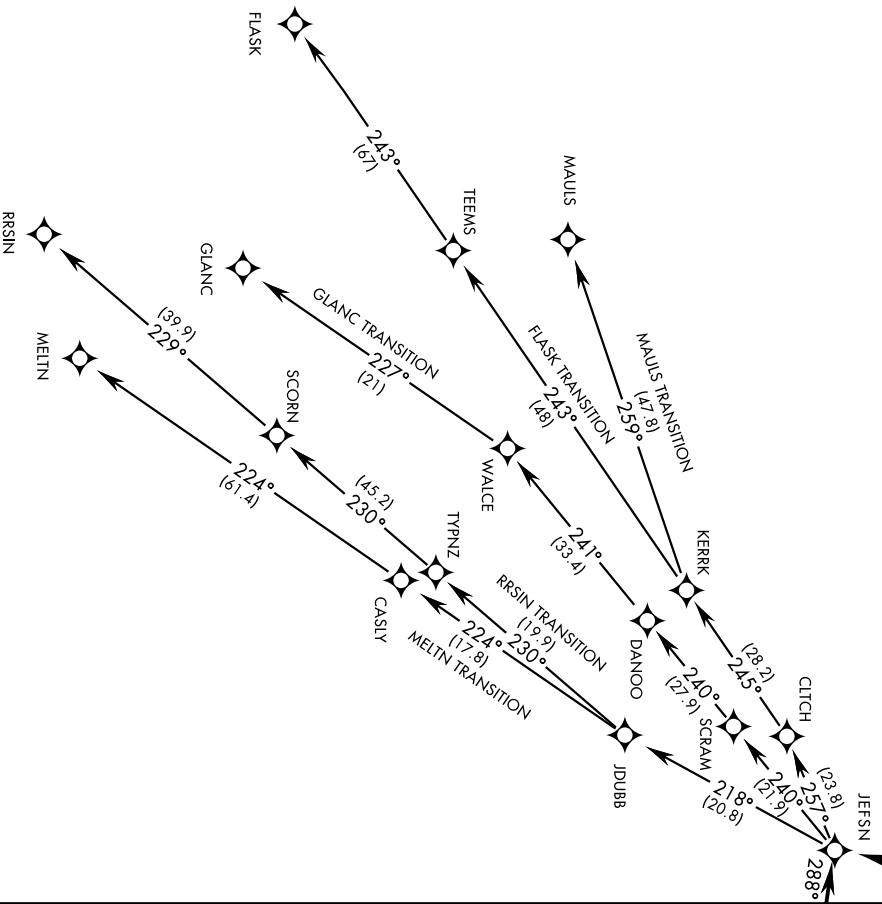
RNAV1-GPS

[USAF]

3000

RADAR required

(Page 2 of 2)



TURBOJET ONLY

NOTE: Chart not to scale

JEFNSN TWO DEPARTURE (RNAV) (JEFNSN2.JEFNSN)

Orig: 31OCT24

CAMP SPRINGS, MARYLAND  
JOINT BASE ANDREWS (KADW)