

CAMP SPRINGS, MARYLAND

RNAV (GPS) RWY 19L

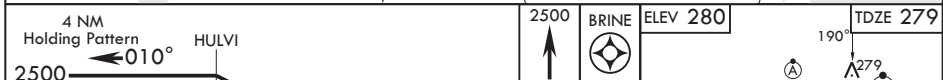
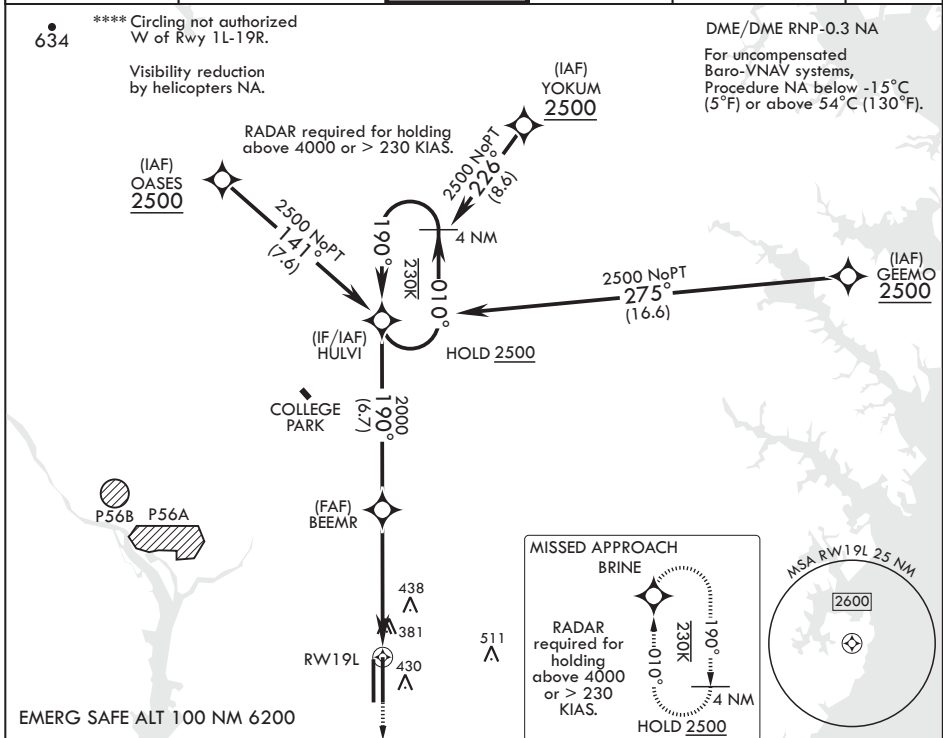
WAAS CH 52203 W19A	APCH CRS 190°	Rwy ldg TDZE 279 Arpt Elev 280
--------------------------	------------------	---

AL-561 (USAF)

JOINT BASE ANDREWS (KADW)

<p>⚠ * When ALS inop, increase RVR to 40, vis to 3/4 mile. ** When ALS inop, increase RVR to 60, vis to 1 1/8 miles. *** When ALS inop, increase CAT AB RVR to 55, vis to 1 mile; CAT CDE RVR to 60, vis to 1 1/8 miles.</p>	<p>ALS-1</p>	<p>MISSED APPROACH: Climb to 2500 direct BRINE and hold.</p>
--	--------------	--

ATIS 133.675 251.05	POTOMAC APP CON 128.0 335.5	TOWER 118.4 349.0	GND CON 121.8 275.8	CLNC DEL 127.55 285.475	CPDLC
------------------------	--------------------------------	----------------------	------------------------	----------------------------	-------



	2500	BRINE	ELEV 280	TDZE 279
	BCN 483			
			TWR 435	
				9318 x 200 9756 x 150 0.3% DOWN

CATEGORY	A	B	C	D	E
LPV DA*		479/24	200	(200-1/2)	
LNAV/VNAV DA**		680/40	401	(400-3/4)	
LNAV MDA***	680/24	401 (400-1/2)	680/40	401 (400-3/4)	
C CIRCLING****	780-1	500 (500-1)	780-1 1/2 500 (500-1 1/2)	840-2	560 (600-2)

HIRL all Rwys
TDZL/CL Rwys 1L, 19R

CAMP SPRINGS, MARYLAND

38°49'N - 76°52'W

JOINT BASE ANDREWS (KADW)

Amdt 1 18MAY23

RNAV (GPS) RWY 19L

NE-3, 26 DEC 2024 to 23 JAN 2025

NE-3, 26 DEC 2024 to 23 JAN 2025