

CAMP SPRINGS, MARYLAND

RNAV (GPS)-A

APCH CRS 325°	Rwy Idg TDZE Arprt Elev 280	N/A N/A
-------------------------	--	------------

AL-561 (USAF)

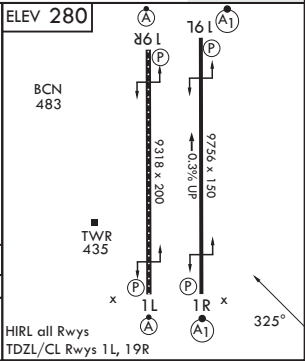
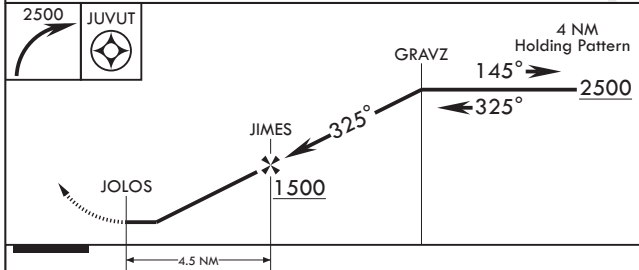
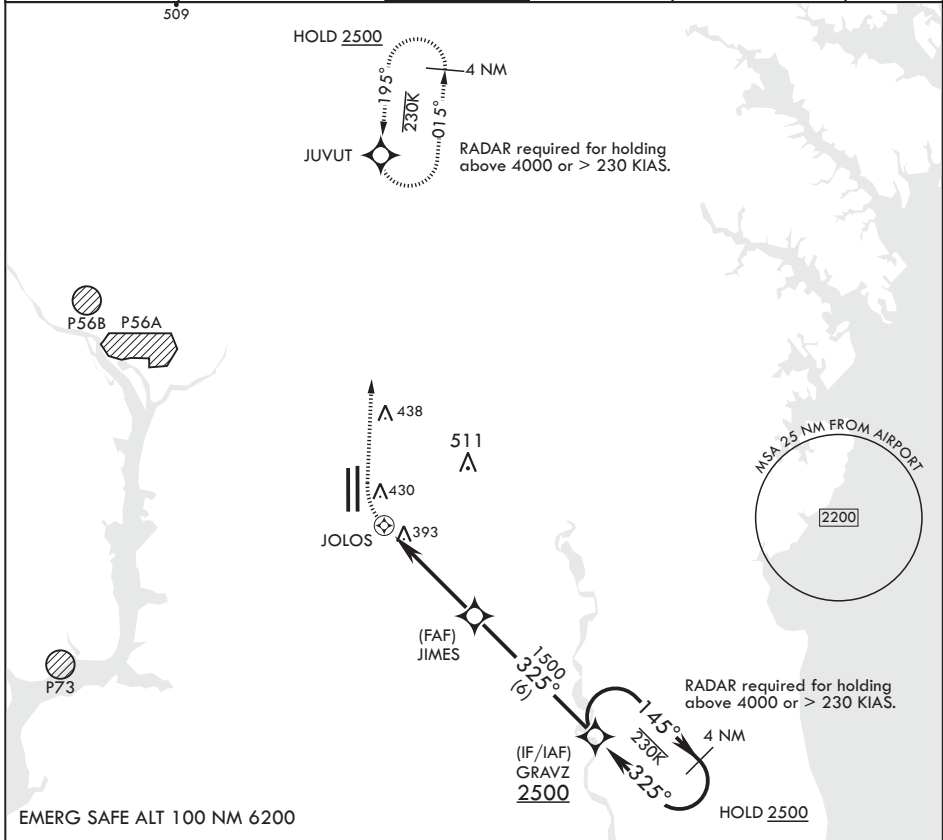
JOINT BASE ANDREWS (KADW)

DME/DME RNP - 0.3 NA

MISSED APPROACH: Climbing right turn to 2500 direct JUVUT and hold.

* Circling not authorized W of Rwy 1L-19R.

ATIS 133.675 251.05	POTOMAC APP CON 128.0 335.5	TOWER 118.4 349.0	GND CON 121.8 275.8	CLNC DEL 127.55 285.475	CPDLC
-------------------------------	---------------------------------------	-----------------------------	-------------------------------	-----------------------------------	-------



CATEGORY	A	B	C	D	E
C CIRCLING*	780-1¼ 501 (600-1¼)		780-1½ 501 (600-1½)	840-2 561 (600-2)	

CAMP SPRINGS, MARYLAND

38°49'N - 76°52'W

JOINT BASE ANDREWS (KADW)

Amdt 1 18MAY23

RNAV (GPS)-A

NE-3, 26 DEC 2024 to 23 JAN 2025

NE-3, 26 DEC 2024 to 23 JAN 2025