

CAMP SPRINGS, MARYLAND

# RNAV (GPS) Z RWY 1L

WAAS CH 52205 W01A	APCH CRS 010°	Rwy ldg TDZE 261 Arprt Elev 280	9318
--------------------------	------------------	--	------

AL-561 (USAF)

JOINT BASE ANDREWS (KADW)

DME/DME RNP-0.3 NA

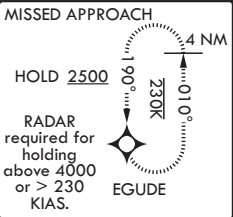


MISSED APPROACH: Climb to 2500 direct EGUDE and hold.

\* When ALS inop, increase RVR to 40, vis to 3/4. When TDZ/CL lights inop, increase RVR to 24.  
\*\* When ALS inop increase vis to 1 1/4 miles.

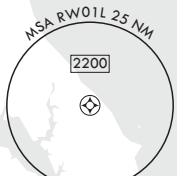
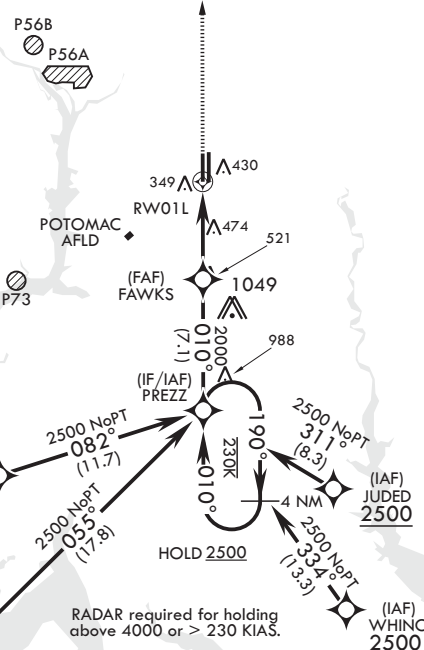
ATIS 133.675 251.05	POTOMAC APP CON 128.0 335.5	TOWER 118.4 349.0	GND CON 121.8 275.8	CLNC DEL 127.55 285.475	CPDLC
------------------------	--------------------------------	----------------------	------------------------	----------------------------	-------

\*\*\* When ALS inop increase CAT AB RVR to 55, vis to 1 mile; CAT CDE vis to 1 1/4 miles.  
\*\*\*\* Circling not authorized W of Rwy 1L-19R.

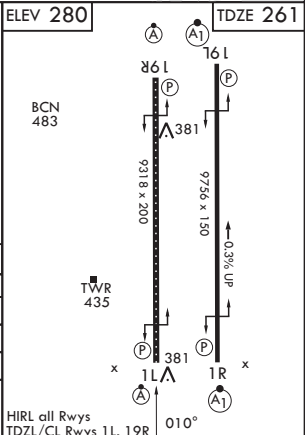
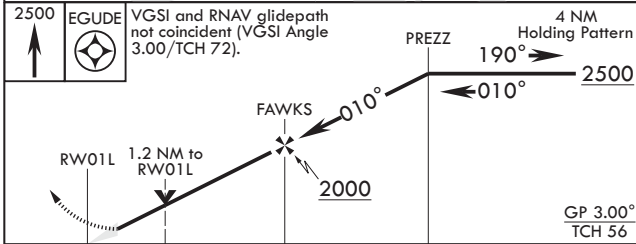


For uncompensated Baro-VNAV systems, Procedure NA below -15°C (5°F) or above 52°C (125°F).

542



EMERG SAFE ALT 100 NM 6200



CATEGORY	A	B	C	D	E
LPV DA*	461/18		200	(200-1/2)	
LNAV/VNAV DA**	687/40		426	(500-3/4)	
LNAV MDA***	700/24	439 (500-1/2)	700/40	439	(500-3/4)
<b>C</b> CIRCLING****	780-1	500 (500-1)	780-1 1/2 500 (500-1 1/2)	840-2	560 (600-2)

HIRL all Rwys TDZL/CL Rwys 1L, 19R

CAMP SPRINGS, MARYLAND

38°49'N - 76°52'W

JOINT BASE ANDREWS (KADW)

Amdt 5 18MAY23

# RNAV (GPS) Z RWY 1L

NE-3, 26 DEC 2024 to 23 JAN 2025

NE-3, 26 DEC 2024 to 23 JAN 2025