

CAMP SPRINGS, MARYLAND

TACAN RWY 19L

VORTAC ADW 113.1 Chan 78	APCH CRS 195°	Rwy ldg TDZE Arprt Elev 9756 279 280
--------------------------------	------------------	--

AL-561 (USAF)

JOINT BASE ANDREWS (KADW)

ATC RADAR required

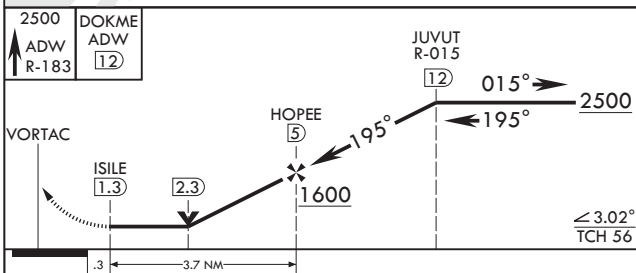
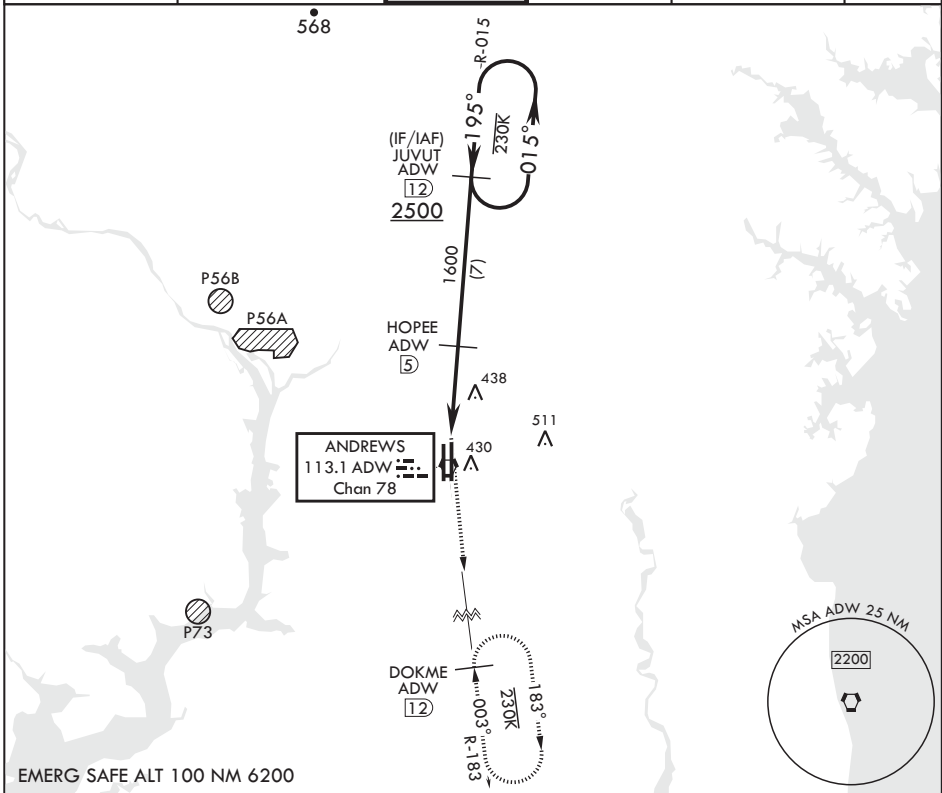
* When ALS inop, increase CAT AB RVR to 55, vis to 1 mile, CAT CDE vis to 1 3/8 miles.
** Circling not authorized W of Rwy 1L-19R.

ALSF-1

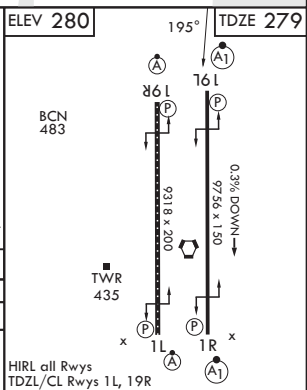


MISSED APPROACH: Climbing to 2500 via ADW VORTAC R-183 to DOKME and hold.

ATIS 133.675 251.05	POTOMAC APP CON 128.0 335.5	TOWER 118.4 349.0	GND CON 121.8 275.8	CLNC DEL 127.55 285.475	CPDLC
------------------------	--------------------------------	----------------------	------------------------	----------------------------	-------



CATEGORY	A	B	C	D	E
S-19L*	740/24 461 (500-1/2)	740/50 461 (500-1)	780-1 1/2 501 (600-1 1/2)	840-2 561 (600-2)	
CIRCLING**	780-1 501 (600-1)				



CAMP SPRINGS, MARYLAND
Amdt 3 18MAY23

38°49'N - 76°52'W

JOINT BASE ANDREWS (KADW)
TACAN RWY 19L

NE-3, 26 DEC 2024 to 23 JAN 2025

NE-3, 26 DEC 2024 to 23 JAN 2025