

CAMP SPRINGS, MARYLAND

TACAN RWY 19R

VORTAC ADW 113.1 Chan 78	APCH CRS 182°	Rwy Idg TDZE Arprt Elev	9318 274 280
--------------------------------	------------------	-------------------------------	--------------------

AL-561 (USAF)

JOINT BASE ANDREWS (KADW)

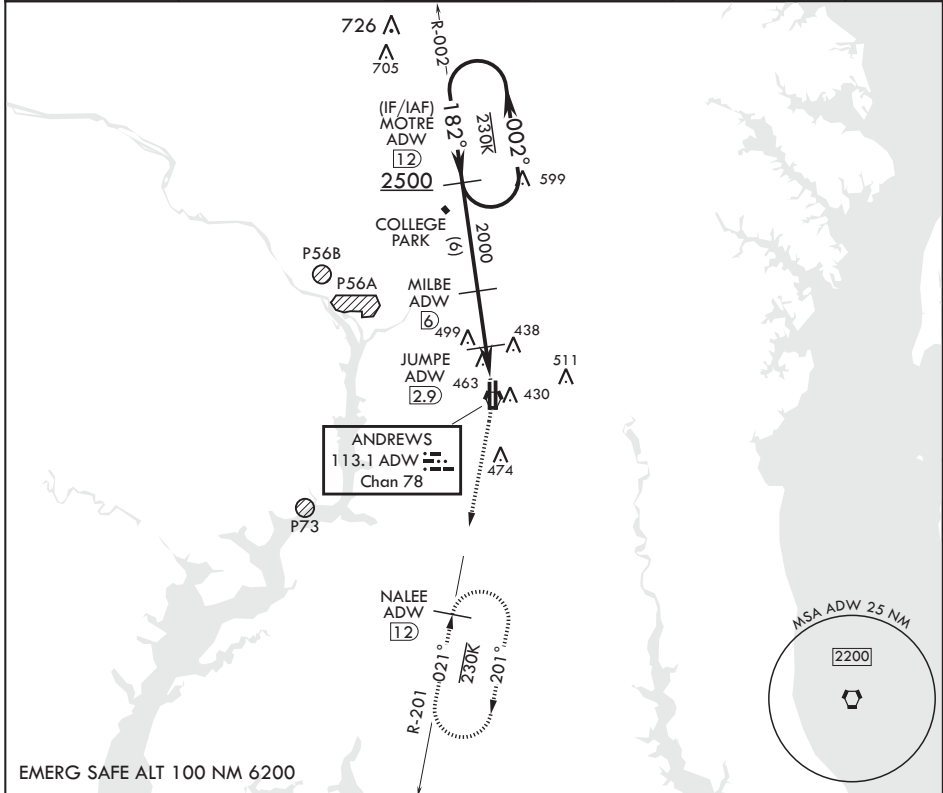
ATC RADAR required

⚠ * When ALS inop, increase CAT AB RVR to 55, vis to 1 mile, CAT CDE vis to 1 3/8 miles.
** Circling not authorized W of Rwy 1L-19R.

ALSF-2

MISSED APPROACH: Climbing to 2500, intercept ADW VORTAC R-201 to NALEE and hold.

ATIS 133.675 251.05	POTOMAC APP CON 128.0 335.5	TOWER 118.4 349.0	GND CON 121.8 275.8	CLNC DEL 127.55 285.475	CPDLC
------------------------	--------------------------------	----------------------	------------------------	----------------------------	-------



EMERG SAFE ALT 100 NM 6200

MOTRE R-002 2500 182°		MILBE 2000	JUMPE 960	BIMKE 1.2	VORTAC	2500 ADW R-201	NALEE ADW 12	ELEV 280	TDZE 274
† MILBE to MAP † 3.11° TCH 71		-3.1 NM		-1.7 NM				BCN 483	
CATEGORY	A	B	C	D	E				
S-19R*	740/24	466 (500-½)	740/50	466	(500-1)				
CIRCLING**	780-1	501 (600-1)	780-1½ 501 (600-1½)	840-2	561 (600-2)				
						HIRL all Rwy		TWR 435	
						TDZL/CL Rwy 1L, 19R		x 1L x 1R x	

CAMP SPRINGS, MARYLAND

38°49'N - 76°52'W

JOINT BASE ANDREWS (KADW)

Amdt 2 18MAY23

TACAN RWY 19R

NE-3, 26 DEC 2024 to 23 JAN 2025

NE-3, 26 DEC 2024 to 23 JAN 2025