

CAMP SPRINGS, MARYLAND

TACAN RWY 1L

VORTAC ADW 113.1 Chan 78	APCH CRS 021°	Rwy ldg TDZE Arprt Elev	9318 261 280
--------------------------------	------------------	-------------------------------	--------------------

AL-561 (USAF)

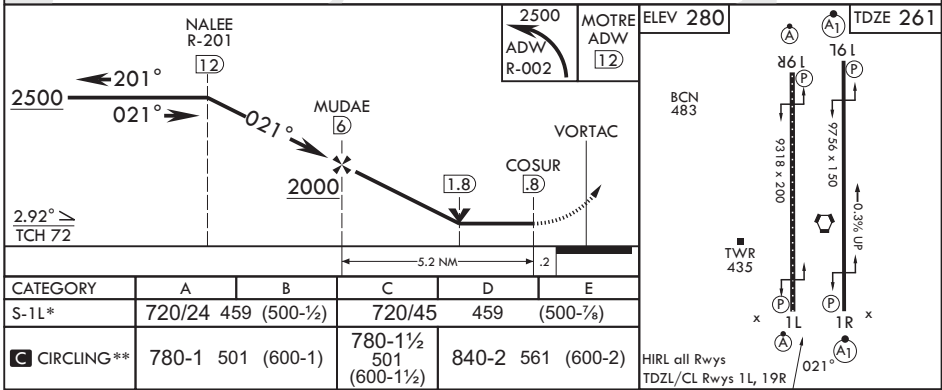
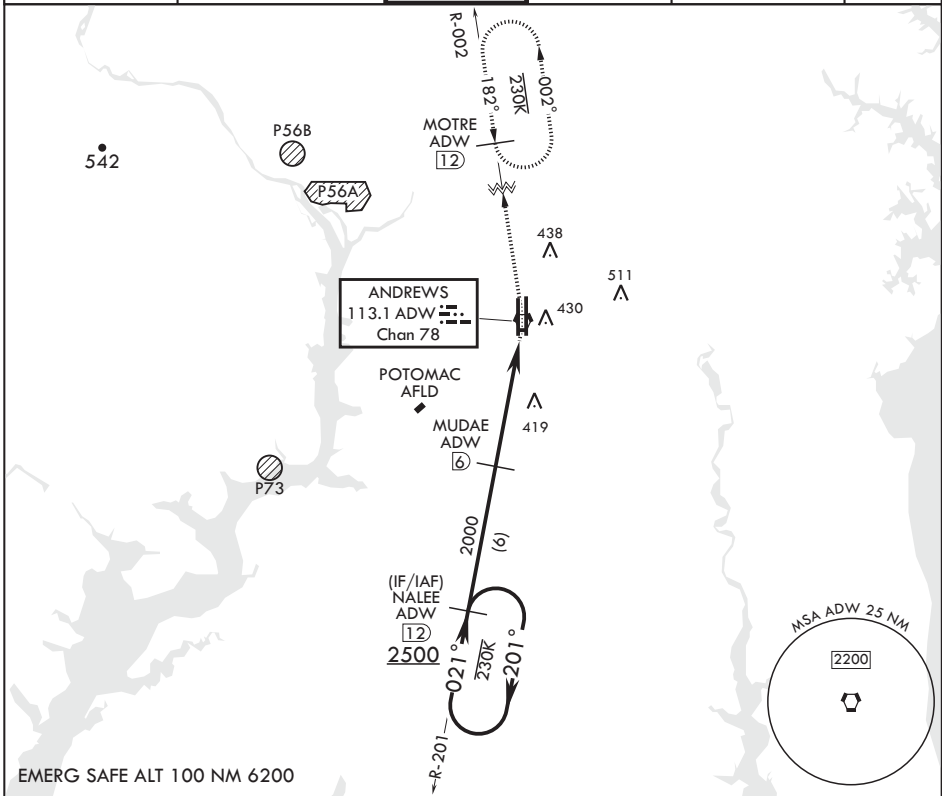
JOINT BASE ANDREWS (KADW)

ATC RADAR required

* When ALS inop, increase CAT AB RVR to 55, vis to 1 mile, CAT CDE vis to 1 3/8 miles.
** Circling not authorized W of Rwy 1L-19R.

ALSF-2 MISSED APPROACH: Climb to 2500 via ADW VORTAC R-002 to MOTRE/ADW 12 DME and hold.

ATIS 133.675 251.05	POTOMAC APP CON 128.0 335.5	TOWER 118.4 349.0	GND CON 121.8 275.8	CLNC DEL 127.55 285.475	CPDLC
------------------------	--------------------------------	----------------------	------------------------	----------------------------	-------



CAMP SPRINGS, MARYLAND

38°49'N - 76°52'W

JOINT BASE ANDREWS (KADW)

Amdt 2 18MAY23

TACAN RWY 1L

NE-3, 26 DEC 2024 to 23 JAN 2025

NE-3, 26 DEC 2024 to 23 JAN 2025