

VUDOO TWO ARRIVAL (RNAV) Transition Routes

POTOMAC APP CON
126.4 282.375
D-ATIS
133.675 251.05
TOWER
118.4 349.0

See following page
for arrival routes

VUDOO
9000

R-6611A & B

R-6613A

R-6601A

R-6601A
R-6601B
R-6601C

9000
*1500
045°
(10)

TRUKK
*1500
078°
(16)

R-4006

9000
*1500
078°
(16)

BEEVR
12000

6 NM
218°
(210K)

5000
*1500
038°
(16)

GOLOE
13000

10 NM
211°

11000
*2000
030°
(10)

HANKC

13000
*2000
022°
(16)

THHMP

NOTE: RADAR required.
NOTE: RNAV 1.
NOTE: DME/DME/IRU or GPS required.
NOTE: P56 area A/B 1.5 NM north of DCA,
avoid surface to 18000 MSL.

10 NM
190°
(230K)

VIIPR

13000
*1600
010°
(26)

CIBAC

(CONTINUED ON FOLLOWING PAGE)
(NARRATIVE ON FOLLOWING PAGE)

BEEVR TRANSITION (BEEVR.VUDOO2): (ATC assigned only).
CIBAC TRANSITION (CIBAC.VUDOO2)
THHMP TRANSITION (THHMP.VUDOO2)

NOTE: Chart not to scale.

NE-3, 26 DEC 2024 to 23 JAN 2025

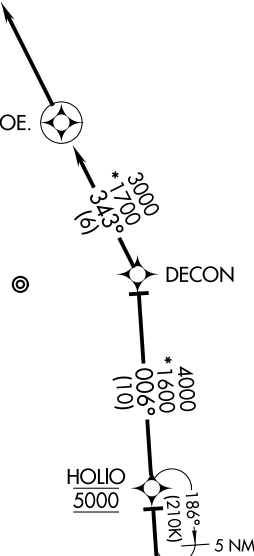
NE-3, 26 DEC 2024 to 23 JAN 2025

VUDOO TWO ARRIVAL (RNAV) Transition Routes

VUDOO TWO ARRIVAL (RNAV) Arrival Routes

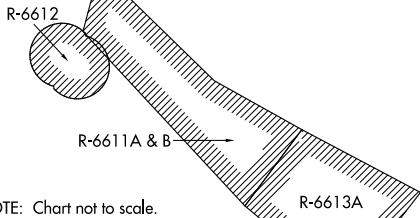
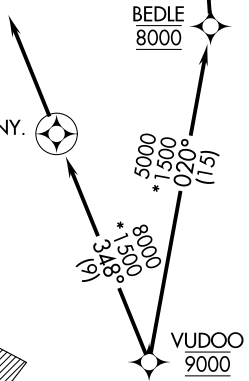
POTOMAC APP CON
126.4 282.375
D-ATIS
133.675 251.05
TOWER
118.4 349.0

REVOE
Landing south: Rwy 19L/R:
Expect RADAR vectors to
final approach course after REVOE.



- NOTE: RADAR required.
- NOTE: RNAV 1.
- NOTE: DME/DME/IRU or GPS required.
- NOTE: P56 area A/B 1.5 NM north of DCA, avoid surface to 18000 MSL.

FUNNY
Landing north: Rwy 1L/R:
Expect RADAR vectors to
final approach course after FUNNY.
8000



NOTE: Chart not to scale.

ARRIVAL ROUTE DESCRIPTION

LANDING NORTH RWYS 1L/R: From VUDOO on track 348° to cross FUNNY at 8000, then on track 348°. Expect RADAR vectors to final approach course.

LANDING SOUTH RWYS 19L/R: From VUDOO on track 020° to cross BEDLE at 8000, then on track 006° to cross HOLIO at 5000, then on track 006° to DECON, then on track 343° to REVOE, then on track 343°. Expect RADAR vectors to final approach course.

VUDOO TWO ARRIVAL (RNAV) Arrival Routes