

ARLFT TWO ARRIVAL (RNAV)

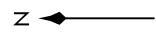
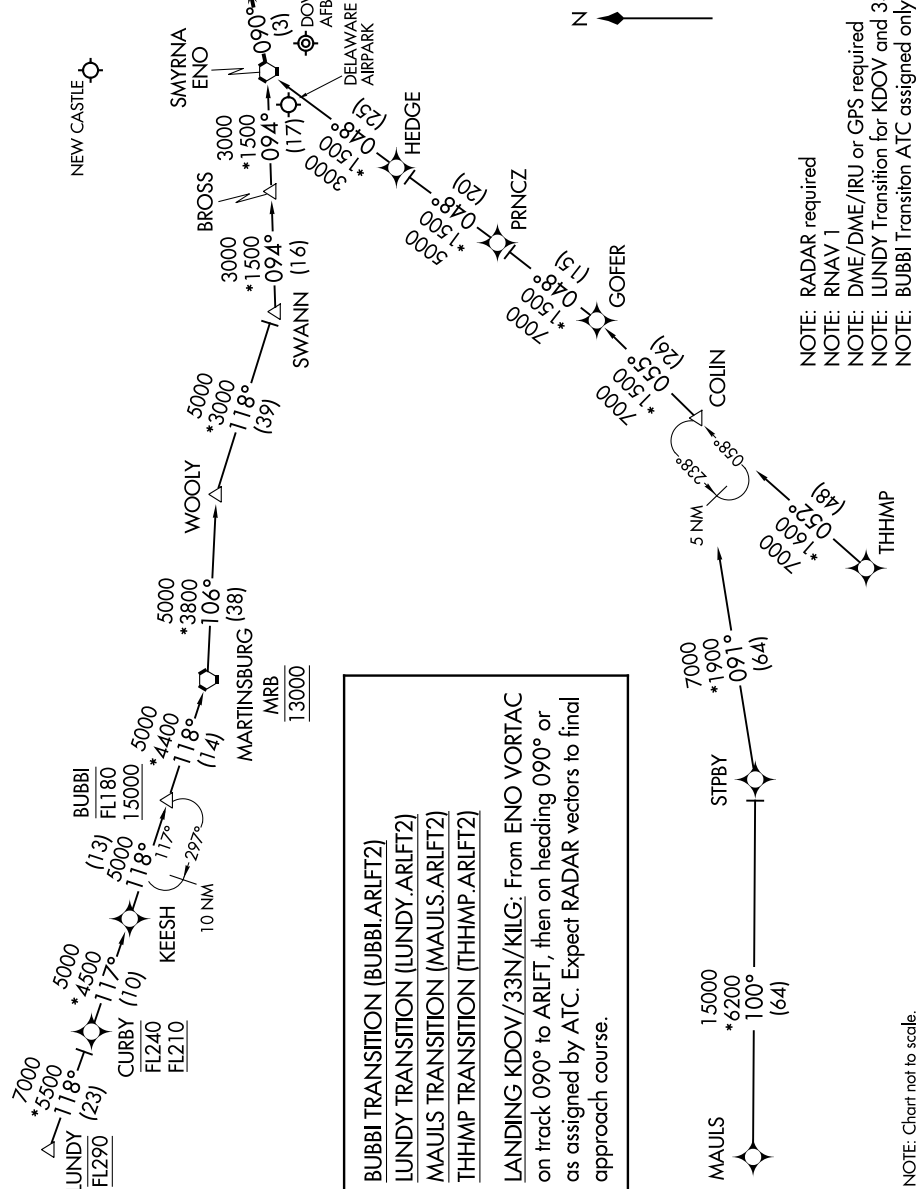
DOVER/CHESWOLD, DELAWARE

DOVER APP CON
132.425 257.875
33N AWOS-3
120.125
IIG ATIS
123.95
KDOV D-ATIS
127.825 273.5

NEW CASTLE

SMYRNA
ENO
ARLFT
LDG 33N,
KDOV
and KILG

DOVER
AFB
DELAWARE
AIRPARK



- NOTE: RADAR required
- NOTE: RNAV 1
- NOTE: DME/DME/IRU or GPS required
- NOTE: LUNDDY Transition for KDOV and 33N arrivals only
- NOTE: BUBBI Transition ATC assigned only

BUBBI TRANSITION (BUBBI.ARLFT2)
LUNDDY TRANSITION (LUNDDY.ARLFT2)
MAULS TRANSITION (MAULS.ARLFT2)
THHMP TRANSITION (THHMP.ARLFT2)

LANDING KDOV/33N/KILG: From ENO VORTAC on track 090° to ARLFT, then on heading 090° or as assigned by ATC. Expect RADAR vectors to final approach course.

NE-3, 26 DEC 2024 to 23 JAN 2025

NE-3, 26 DEC 2024 to 23 JAN 2025

ARLFT TWO ARRIVAL (RNAV)

DOVER/CHESWOLD, DELAWARE

NOTE: Chart not to scale.