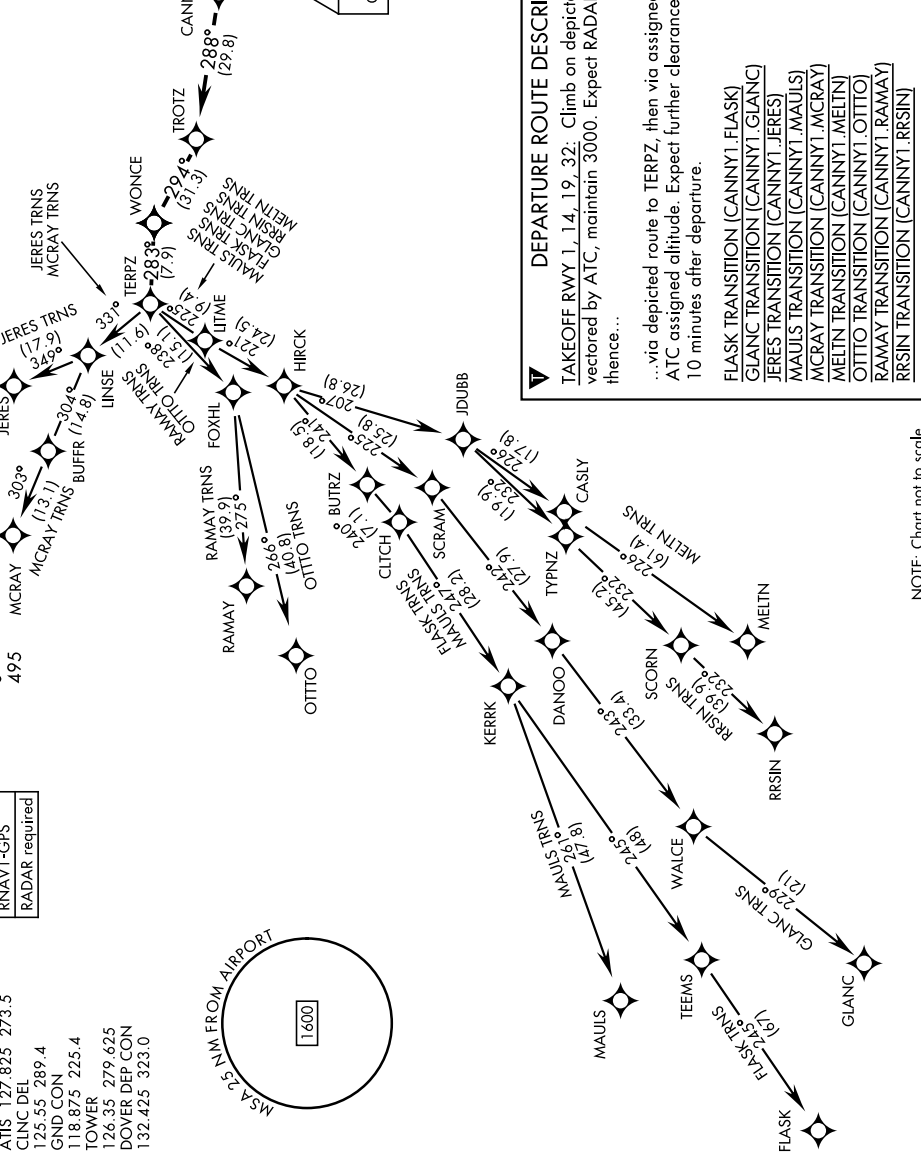
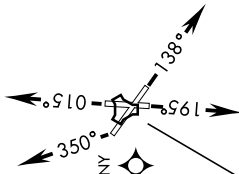


CANNY ONE DEPARTURE (RNAV)(CANNY1.CNY)

[USAF]

TOP ALTITUDE
3000



DEPARTURE ROUTE DESCRIPTION

TAKEOFF RWY 1, 14, 19, 32: Climb on depicted heading until vectored by ATC, maintain 3000. Expect RADAR vectors to CANNY, thence...

...via depicted route to TERPZ, then via assigned transition. Maintain ATC assigned altitude. Expect further clearance to filed altitude within 10 minutes after departure.

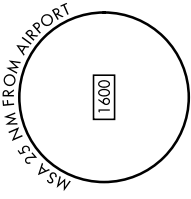
FLASK TRANSITION (CANNY1.FLASK)
 GLANC TRANSITION (CANNY1.GLANC)
 JERES TRANSITION (CANNY1.JERES)
 MAULS TRANSITION (CANNY1.MAULS)
 MCRAY TRANSITION (CANNY1.MCRAY)
 MELTN TRANSITION (CANNY1.MELTN)
 OTTO TRANSITION (CANNY1.OTTO)
 RAMAY TRANSITION (CANNY1.RAMAY)
 RR SIN TRANSITION (CANNY1.RRSIN)

NE-3, 26 DEC 2024 to 23 JAN 2025

NOTE: Chart not to scale

NE-3, 26 DEC 2024 to 23 JAN 2025

ATIS 127.825 273.5
 CLNC DEL 125.55 289.4
 GND CON 118.875 225.4
 TOWER 126.35 279.625
 DOVER DEP CON 132.425 323.0



CANNY ONE DEPARTURE (RNAV)(CANNY1.CNY)

Amtd 3 11JUL24