

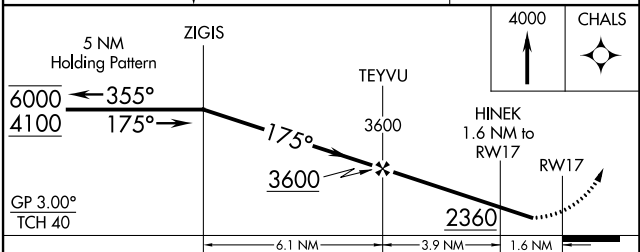
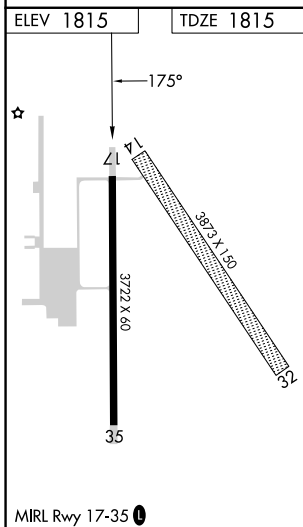
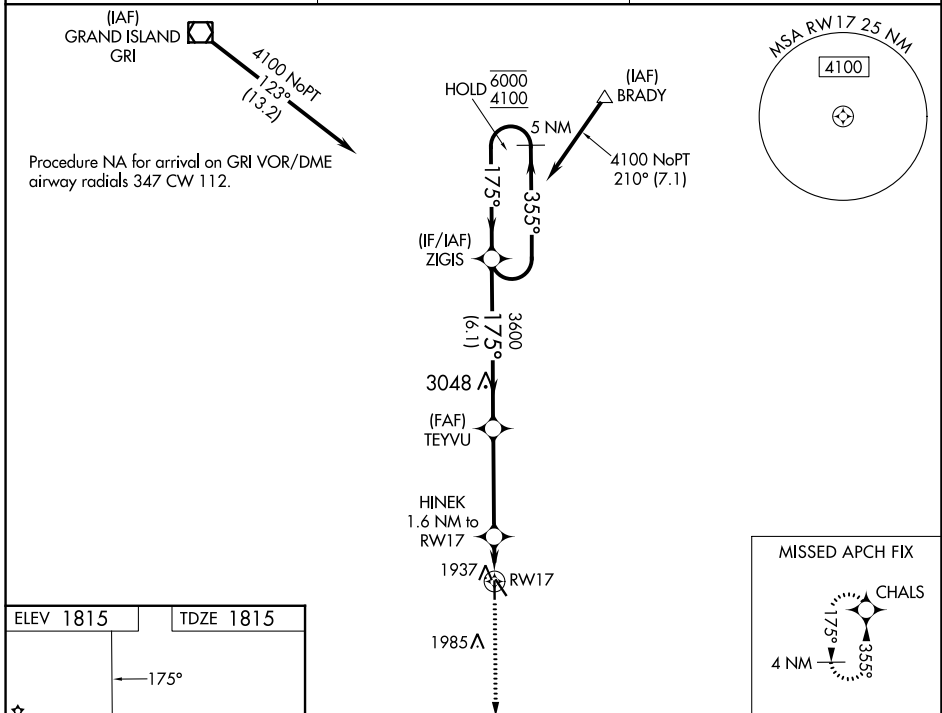
WAAS CH 99631 W17A	APP CRS 175°	Rwy Idg TDZE Apt Elev	3722 1815 1815
--	------------------------	-----------------------------	---

RNAV (GPS) RWY 17

HARVARD STATE (Ø8K)

RNP APCH - GPS.	MISSED APPROACH: Climb to 4000 direct CHALS and hold.
<p>▼ Rwy 17 helicopter visibility reduction below ¾ SM NA. Baro-VNAV NA.</p> <p>▲ NA Use AUH altimeter setting; when not received, use GRI altimeter setting; increase LPV DA to 2121 feet and LNAV/VNAV DA to 2136 feet; increase all MDAs 20 feet.</p>	

AUH AWOS-3 121.225	MINNEAPOLIS CENTER 119.4 278.8	CTAF 122.90
------------------------------	--	-----------------------



CATEGORY	A	B	C	D
LPV DA	2102-1	287 (300-1)		NA
LNAV/VNAV DA	2117-1	302 (400-1)		NA
LNAV MDA	2280-1	465 (500-1)		NA

NC-2, 26 DEC 2024 to 23 JAN 2025

NC-2, 26 DEC 2024 to 23 JAN 2025