

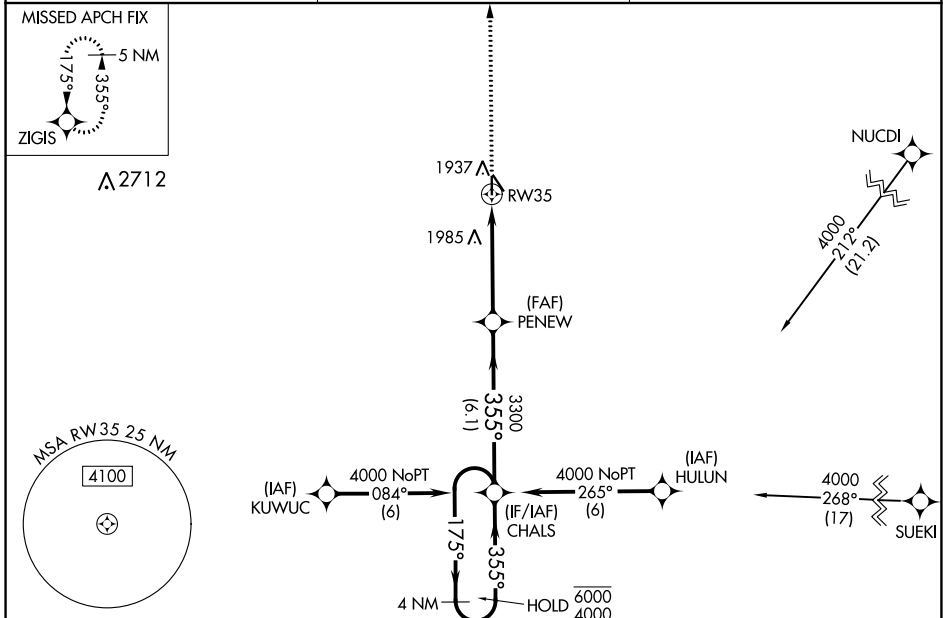
WAAS CH <b>86531</b> <b>W35A</b>	APP CRS <b>355°</b>	Rwy Idg <b>3722</b> TDZE <b>1814</b> Apt Elev <b>1815</b>
--	------------------------	---

# RNAV (GPS) RWY 35

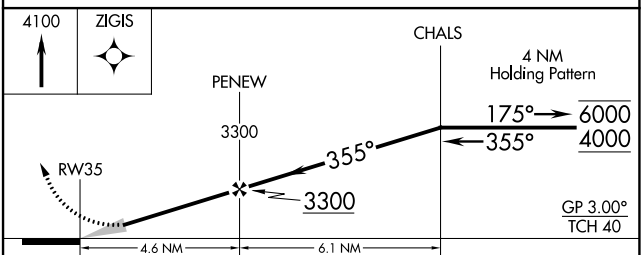
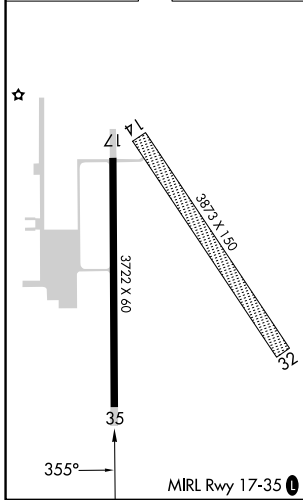
HARVARD STATE (Ø8K)

RNP APCH - GPS.	MISSED APPROACH: Climb to 4100 direct ZIGIS and hold.
<p>▼ Baro-VNAV NA. Use AUH altimeter setting; when not received, ▲ NA use GRI altimeter setting; increase LPV DA to 2120 feet and LNAV/VNAV DA to 2312 feet; increase all MDAs 20 feet.</p>	

AUH AWOS-3 <b>121.225</b>	MINNEAPOLIS CENTER <b>119.4 278.8</b>	CTAF <b>122.9</b>
------------------------------	--	----------------------



ELEV 1815	TDZE 1814
-----------	-----------



CATEGORY	A	B	C	D
LPV DA	2101-1	287 (300-1)		NA
LNAV/VNAV DA	2293-1 <sup>3</sup> / <sub>8</sub>	479 (500-1 <sup>3</sup> / <sub>8</sub> )		NA
LNAV MDA	2320-1	506 (600-1)		NA

NC-2, 26 DEC 2024 to 23 JAN 2025

NC-2, 26 DEC 2024 to 23 JAN 2025