

LOC I-LXB <b>111.7</b>	APP CRS <b>101°</b>	Rwy Idg <b>10502</b> TDZE <b>1203</b> Apt Elev <b>1203</b>
---------------------------	------------------------	--

# ILS RWY 10L (CAT II & III)

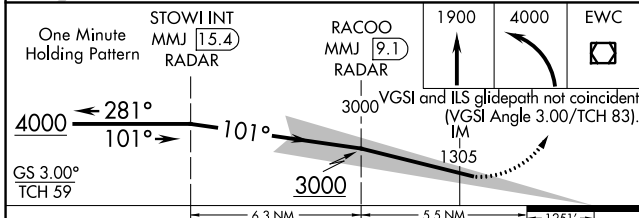
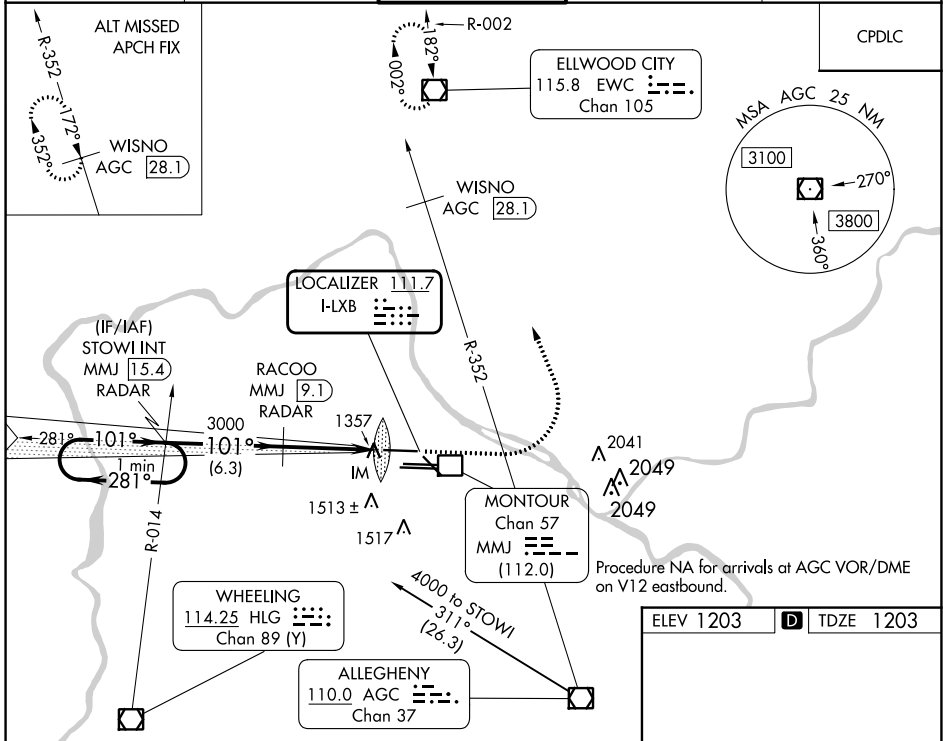
PITTSBURGH INTL (PIT)

Simultaneous approach authorized. DME or RADAR required. CAT II: RVR 1000 authorized with specific OPSPEC, MSPEC, or LOA approval and use of autoland or HUD to touchdown. DME from MMJ DME. Simultaneous reception of I-LXB and MMJ DME required.

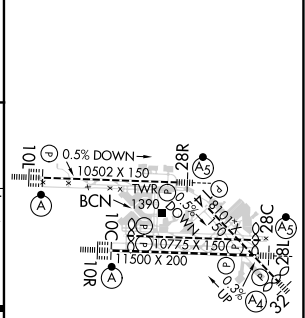
ALS-F-2

MISSED APPROACH: Climb to 1900 then climbing left turn to 4000 direct EWC VOR/DME and hold.

D-ATIS ARR <b>127.25</b> DEP <b>135.9</b>	PITTSBURGH APP CON <b>123.95 360.8</b>	PITTSBURGH TOWER <b>128.3 291.7</b>	GND CON SOUTH <b>121.9 348.6</b> NORTH <b>127.8 348.6</b>	CLNC DEL <b>126.75 353.7</b>
---	---	--	---	---------------------------------



ELEV 1203	<b>D</b>	TDZE 1203
-----------	----------	-----------



CATEGORY	A	B	C	D
S-ILS 10L	CAT II RA NA/12 100 DA 1303			
S-ILS 10L	CAT III RVR 06			

**CATEGORY II & III ILS - SPECIAL AIRCREW & AIRCRAFT CERTIFICATION REQUIRED**

REIL Rwy 10C  
HIRL all Rwys  
TDZ/CL Rws 10L, 10R, 28L, 28R, 28C, and 32

NE-4, 26 DEC 2024 to 23 JAN 2025

NE-4, 26 DEC 2024 to 23 JAN 2025