

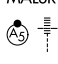
LOC I-HFE <b>111.7</b>	APP CRS <b>281°</b>	Rwy ldg <b>10102</b> TDZE <b>1174</b> Apt Elev <b>1203</b>
---------------------------	------------------------	--

# ILS RWY 28R (SA CAT I & II)

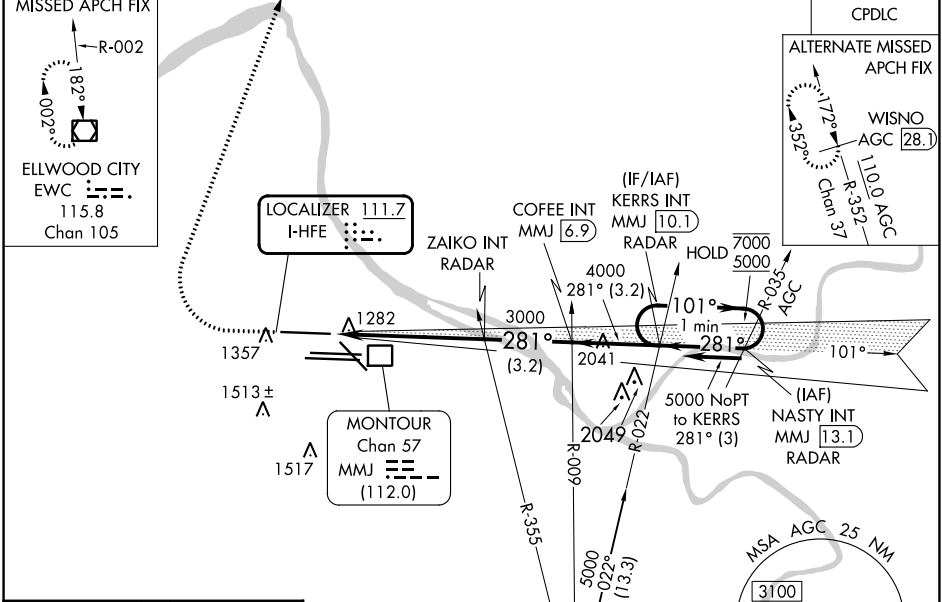
PITTSBURGH INTL (PIT)

From NASTY: Radar required for procedure entry.

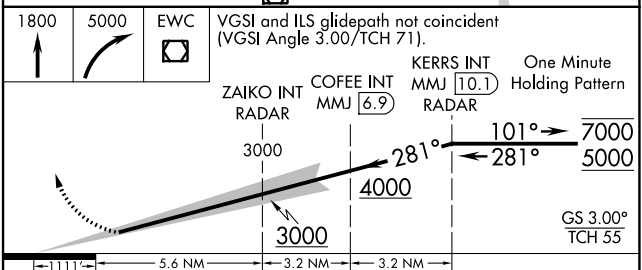
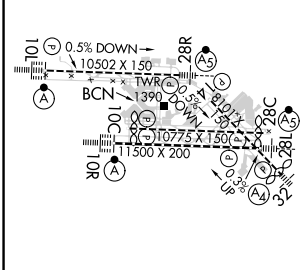
Simultaneous approach authorized. DME from MMJ DME. Simultaneous reception of I-HFE and MMJ DME required. SA CAT I: Requires specific OPSPEC, MSPEC, or LOA approval and use of HUD to DH. SA CAT II: Reduced lighting: requires specific OPSPEC, MSPEC, or LOA approval and use of autoland or HUD to touchdown.

MALSR  MISSED APPROACH: Climb to 1800 then climbing right turn to 5000 direct EVWC VOR/DME and hold.

D-ATIS ARR <b>127.25</b> DEP <b>135.9</b>	PITTSBURGH APP CON <b>123.95 360.8</b>	PITTSBURGH TOWER <b>128.3 291.7</b>	GND CON SOUTH <b>121.9 348.6</b> NORTH <b>127.8 348.6</b>	CLNC DEL <b>126.75 353.7</b>
---	---	--	---	---------------------------------



ELEV <b>1203</b>	<b>D</b>	TDZE <b>1174</b>
------------------	----------	------------------



CATEGORY	A	B	C	D
S-ILS 28R	SA CAT I	RA 192/14	150	DA 1324
S-ILS 28R	SA CAT II	RA 116/12	100	DA 1274

**SA CATEGORY I & II ILS - SPECIAL AIRCREW & AIRCRAFT CERTIFICATION REQUIRED**

REIL Rwy 10C  
HIRL all Rwys  
TDZ/CL Rwys 10L, 10R, 28L, 28R, 28C, and 32

NE-4, 26 DEC 2024 to 23 JAN 2025

NE-4, 26 DEC 2024 to 23 JAN 2025