


LOC I-LXB <b>111.7</b>	APP CRS <b>101°</b>	Rwy ldg <b>10502</b> TDZE <b>1203</b> Apt Elev <b>1203</b>
---------------------------	------------------------	--

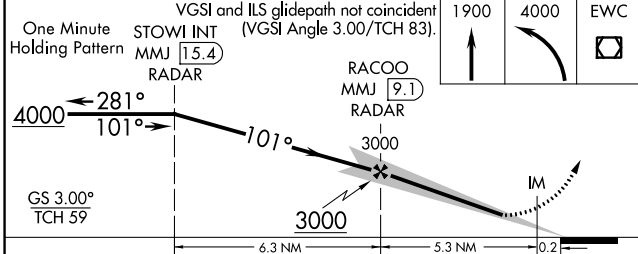
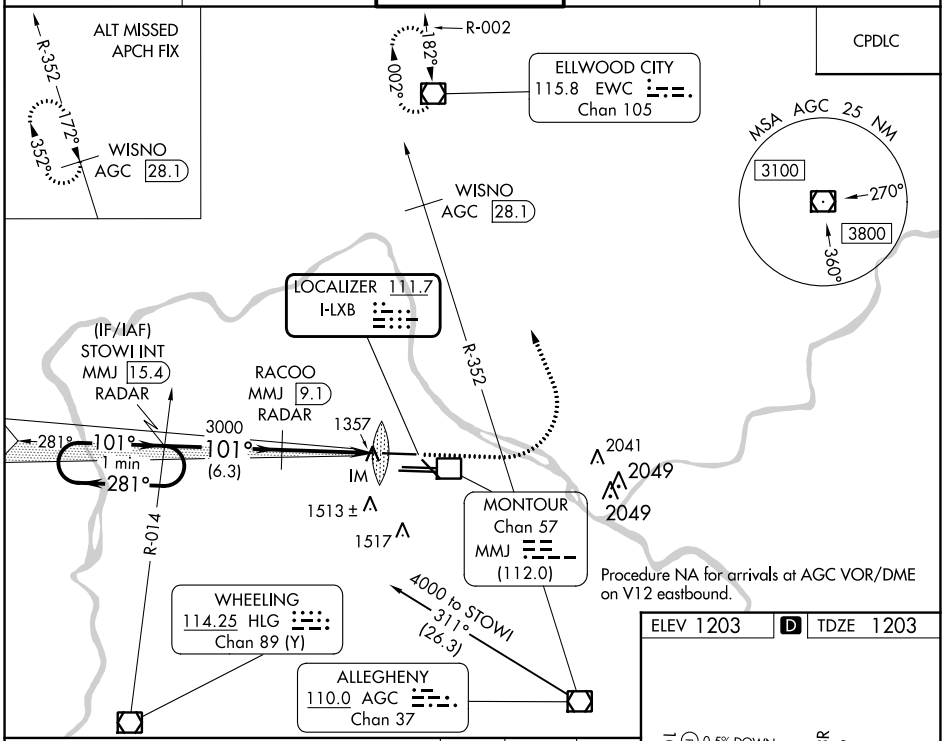
# ILS or LOC RWY 10L

PITTSBURGH INTL (PIT)

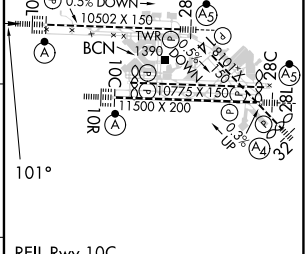
**⚠** Simultaneous approach authorized. DME or RADAR required.  
 For inop ALS, increase S-ILS 10L Cat E visibility to RVR 4000 and S-LOC 10L Cats C/D/E visibility to 1 3/8 SM. DME from MMJ DME. Simultaneous reception of I-LXB and MMJ DME required.

ALSIF-2  MISSED APPROACH: Climb to 1900 then climbing left turn to 4000 direct EWC VOR/DME and hold.

D-ATIS ARR <b>127.25</b> DEP <b>135.9</b>	PITTSBURGH APP CON <b>123.95 360.8</b>	PITTSBURGH TOWER <b>128.3 291.7</b>	GND CON SOUTH <b>121.9 348.6</b> NORTH <b>127.8 348.6</b>	CLNC DEL <b>126.75 353.7</b>
---	---	--	---	---------------------------------



ELEV 1203	<b>D</b> TDZE 1203
-----------	--------------------



CATEGORY	A	B	C	D	E	
S-ILS 10L	1403/18 200 (200-1/2)					
S-LOC 10L	1700/24 497 (500-1/2)	1700/50 497 (500-1)				
<b>C</b> CIRCLING	1700-1 497 (500-1)	1880-2 677 (700-2)	1880-2 1/4 677 (700-2 1/4)	1880-2 1/2 677 (700-2 1/2)		
	FAF to MAP 5.5 NM					
	Knots	60	90	120	150	180
	Min:Sec	5:30	3:40	2:45	2:12	1:50

NE-4, 26 DEC 2024 to 23 JAN 2025

NE-4, 26 DEC 2024 to 23 JAN 2025