

LOC I-GUT	APP CRS	Rwy Idg	10R	10C
<b>108.9</b>	<b>101°</b>	TDZE	<b>11492</b>	<b>9708</b>
		Apt Elev	<b>1135</b>	<b>1141</b>
			<b>1203</b>	<b>1203</b>

# ILS or LOC RWY 10R

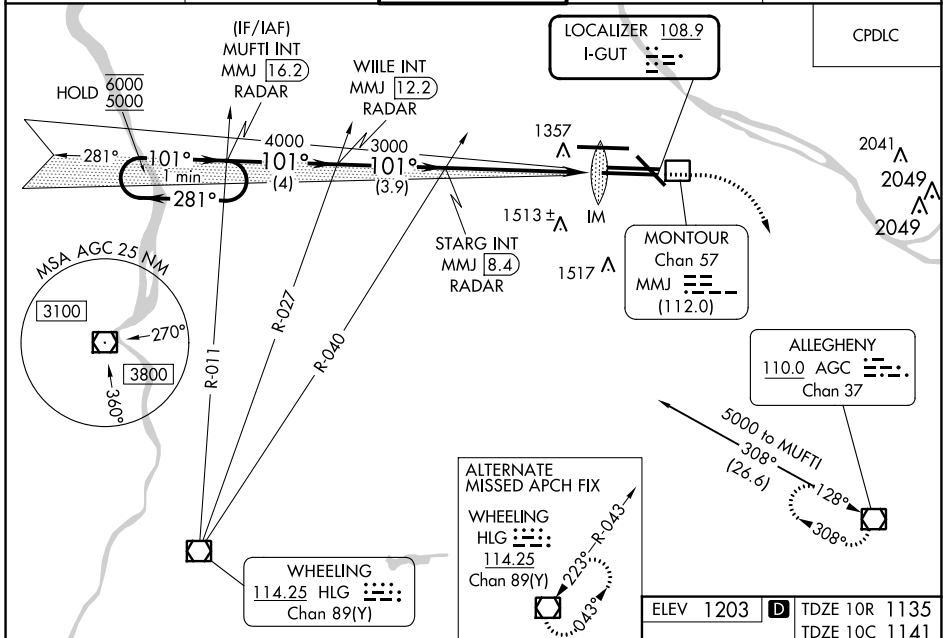
PITTSBURGH INTL (PIT)

**Simultaneous approach authorized.**  
For inop ALS, increase S-ILS 10R Cat E visibility to RVR 4000 and S-LOC 10R Cat E visibility to 1 1/2 SM.

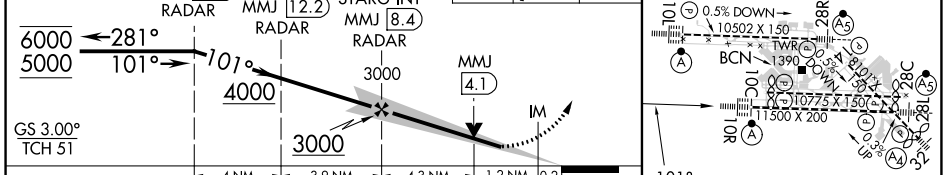
**ALSF-2**

MISSED APPROACH: Climb to 1900 then climbing right turn to 5000 direct AGC VOR/DME and hold, continue climb-in-hold to 5000.

D-ATIS	PITTSBURGH APP CON	PITTSBURGH TOWER	GND CON	CLNC DEL
ARR <b>127.25</b>	<b>123.95 360.8</b>	<b>128.3 291.7</b>	SOUTH <b>121.9 348.6</b>	<b>126.75 353.7</b>
DEP <b>135.9</b>			NORTH <b>127.8 348.6</b>	



ELEV 1203	TDZE 10R 1135
	TDZE 10C 1141



CATEGORY	A	B	C	D	E
S-ILS 10R	1335/18 200 (200-1/2)				1335/24 200 (200-1/2)
S-LOC 10R	1660/24	525 (500-1/2)	1660/55 525 (500-1)		
SIDESTEP 10C	1660/50	519 (500-1)	1660-1 1/2 519 (500-1 1/2)	1660-2	519 (500-2)
CIRCLING	1700-1	497 (500-1)	1880-2 677 (700-2)	1880-2 1/4 677 (700-2 1/4)	1900-2 1/2 697 (700-2 1/2)

REIL Rwy 10C	HIRL all Rwys				
	TDZ/CL Rwys 10L, 10R, 28L, 28R, 28C, and 32				
FAF to MAP 5.7 NM					
Knots	60	90	120	150	180
Min:Sec	5:42	3:48	2:51	2:17	1:54

NE-4, 26 DEC 2024 to 23 JAN 2025

NE-4, 26 DEC 2024 to 23 JAN 2025