

LOC I-HFE <b>111.7</b>	APP CRS <b>281°</b>	Rwy ldg <b>10102</b> TDZE <b>1174</b> Apt Elev <b>1203</b>
---------------------------	------------------------	------------------------------------------------------------------

# ILS or LOC RWY 28R

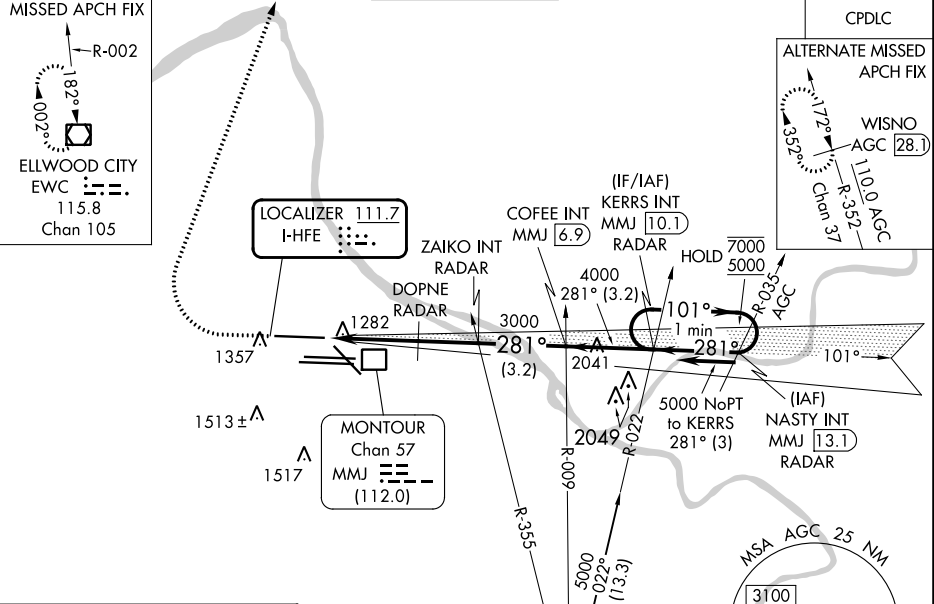
PITTSBURGH INTL (PIT)

From NASTY: Radar required for procedure entry.  
Radar required for LOC only.

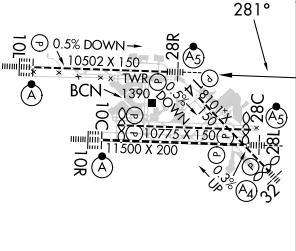
MALSR MISSED APPROACH: Climb to 1800 then climbing right turn to 5000 direct EWC VOR/DME and hold.

**∇** Simultaneous approach authorized. For inop ALS, increase S-ILS 28R Cat E visibility to RVR 4000 and S-LOC 28R Cats C/D/E visibility to RVR 5500. DME from **▲** MMJ DME. Simultaneous reception of I-HFE and MMJ DME required.

D-ATIS ARR <b>127.25</b> DEP <b>135.9</b>	PITTSBURGH APP CON <b>123.95 360.8</b>	PITTSBURGH TOWER <b>128.3 291.7</b>	GND CON SOUTH <b>121.9 348.6</b> NORTH <b>127.8 348.6</b>	CLNC DEL <b>126.75 353.7</b>
-------------------------------------------------	-------------------------------------------	----------------------------------------	-----------------------------------------------------------------	---------------------------------



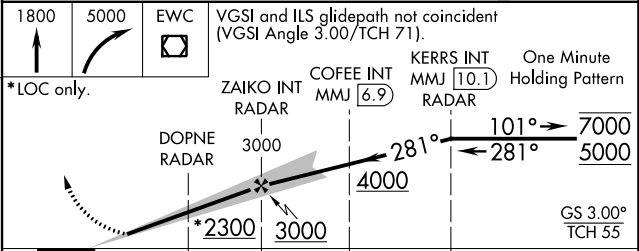
ELEV <b>1203</b>	<b>D</b>	TDZE <b>1174</b>
------------------	----------	------------------



REIL Rwy 10C  
HIRL all Rwys  
TDZ/CL Rwys 10L, 10R, 28L, 28R,  
28C, and 32

FAF to MAP 5.6 NM

Knots	60	90	120	150	180
Min:Sec	5:36	3:44	2:48	2:14	1:52



CATEGORY	A	B	C	D	E
S-ILS 28R	1374/18 200 (200-½)				
S-LOC 28R	1540/24	366 (400-½)	1540/35 366 (400-¾)		
<b>C</b> CIRCLING	1700-1	497 (500-1)	1880-2 677 (700-2)	1880-2¼ 677 (700-2¼)	1880-2½ 677 (700-2½)

NE-4, 26 DEC 2024 to 23 JAN 2025

NE-4, 26 DEC 2024 to 23 JAN 2025