

LOC/DME I-TQW <b>111.3</b> Chan <b>50</b>	APP CRS <b>325°</b>	Rwy ldg <b>7466</b> TDZE <b>1124</b> Apt Elev <b>1203</b>
---	------------------------	---

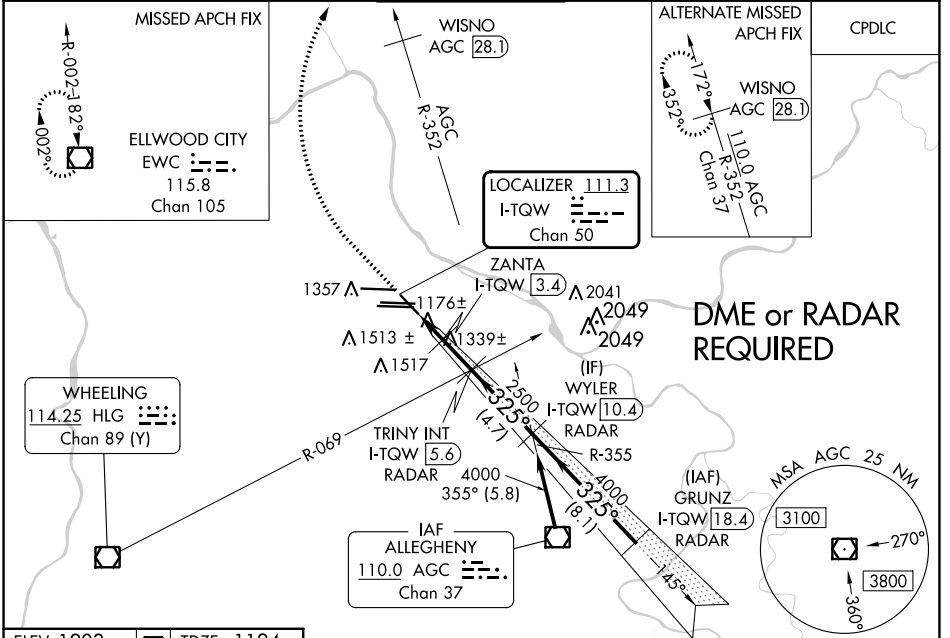
# ILS or LOC RWY 32

PITTSBURGH INTL (PIT)

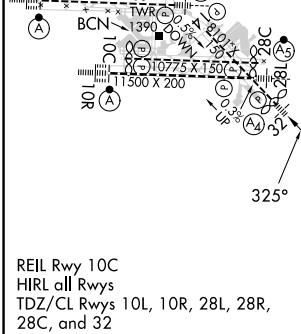
**⚠** DME or RADAR required. Inop table does not apply to S-ILS 32. For inop ALS, increase S-LOC 32 Cat E visibility to 1/4 SM and ZANTA fix minimums S-LOC 32 Cat E visibility to RVR 6000.

**MALS** MISSED APPROACH: Climb to 1800 then climbing right turn to 4000 direct EWC VOR/DME and hold.

D-ATIS ARR <b>127.25</b> DEP <b>135.9</b>	PITTSBURGH APP CON <b>123.95 360.8</b>	PITTSBURGH TOWER <b>128.3 291.7</b>	GND CON SOUTH <b>121.9 348.6</b> NORTH <b>127.8 348.6</b>	CLNC DEL <b>126.75 353.7</b>
---	---	--	---	---------------------------------



ELEV <b>1203</b>	<b>D</b>	TDZE <b>1124</b>
------------------	----------	------------------



1800	4000	EWC	VGSI and ILS glidepath not coincident (VGSI Angle 3.00/TCH 72).		
			WYLER I-TQW <b>18.4</b>	GRUNZ I-TQW <b>18.4</b>	RADAR
*LOC only.			TRINY INT I-TQW <b>10.4</b>	WYLER I-TQW <b>10.4</b>	RADAR
I-TQW <b>1.4</b>	*I-TQW <b>2.4</b>	ZANTA I-TQW <b>3.4</b>	325°		
1 NM			1 NM		
2.2 NM			4.7 NM		
1760			2500		
2500			4000		
6000			GS 3.00° TCH 37		

CATEGORY	A	B	C	D	E
S-ILS 32	1324/40 200 (200-3/4)				
S-LOC 32	1760/40	636 (600-3/4)	1760-1/2	636 (600-1/2)	
CIRCLING	1760-1	557 (600-1)	1880-2	1880-2 1/4	1880-2 1/2
ZANTA FIX MINIMUMS (DME REQUIRED)					
S-LOC 32	1520/40	396 (400-3/4)	1520/45	396 (400-3/8)	
CIRCLING	1700-1	497 (500-1)	1880-2	1880-2 1/4	1880-2 1/2
677 (700-2) 677 (700-2 1/4) 677 (700-2 1/2)					

FAF to MAP 4.2 NM					
Knots	60	90	120	150	180
Min:Sec	4:12	2:48	2:06	1:41	1:24

NE-4, 26 DEC 2024 to 23 JAN 2025

NE-4, 26 DEC 2024 to 23 JAN 2025