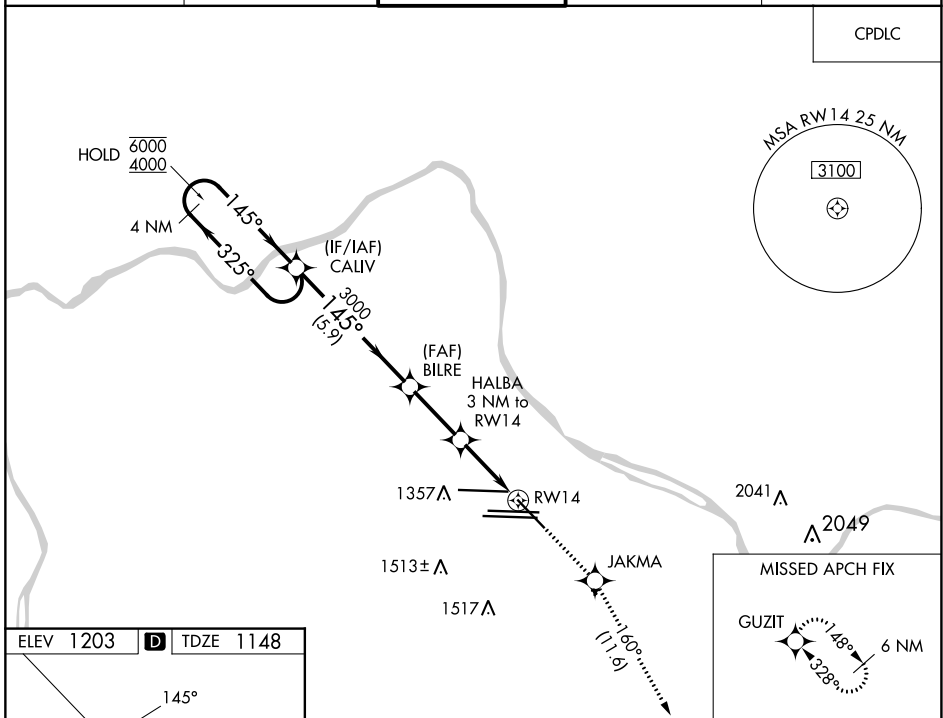


WAAS CH 77526 W14A	APP CRS 145°	Rwy Idg TDZE Apt Elev	7366 1148 1203
--	------------------------	-----------------------------	---

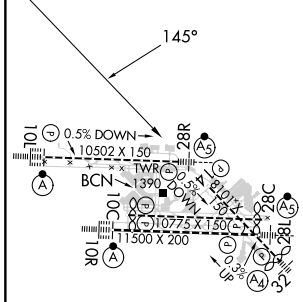
RNAV (GPS) RWY 14

PITTSBURGH INTL (PIT)

RNP APCH - GPS.		MISSED APPROACH: Climb to 4000 direct JAKMA and on track 160° to GUZIT and hold.		
⚠ Rwy 14 helicopter visibility reduction below RVR 4000 NA. For uncompensated Baro-VNAV systems, procedure NA below -17°C or above 54°C.				
D-ATIS ARR 127.25 DEP 135.9	PITTSBURGH APP CON 123.95 360.8	PITTSBURGH TOWER 128.3 291.7	GND CON SOUTH 121.9 348.6 NORTH 127.8 348.6	CLNC DEL 126.75 353.7



ELEV 1203	D	TDZE 1148
-----------	----------	-----------



VGSI and RNAV glidepath not coincident (VGSI Angle 3.00/TCH 67').			
4000	JAKMA	GUZIT	
↑	✦	tr 160°	✦
Holding Pattern CALIV 6000 ← 325° 4000 → 145° GP 3.00° TCH 60 3000 2160 5.9 NM 2.6 NM 1.7 NM 1.3 NM			
CATEGORY	A	B	C
LPV DA	1655-1 3/8 507 (500-1 3/8)		
LNAV/VNAV DA	1654-1 3/8 506 (500-1 3/8)		
LNAV MDA	1640/55	492 (500-1)	1640-1 3/8 492 (500-1 3/8)
C CIRCLING	1700-1	497 (500-1)	1880-2 677 (700-2) 1880-2 1/4 677 (700-2 1/4)

REIL Rwy 10C
HIRL all Rwys
TDZ/CL Rwys 10L, 10R, 28L, 28R,
28C, and 32

NE-4, 26 DEC 2024 to 23 JAN 2025

NE-4, 26 DEC 2024 to 23 JAN 2025