

RNAV (RNP) Z RWY 28R

PITTSBURGH INTL (PIT)

APP CRS 281°	Rwy Idg 10102
	TDZE 1174
	Apt Elev 1203

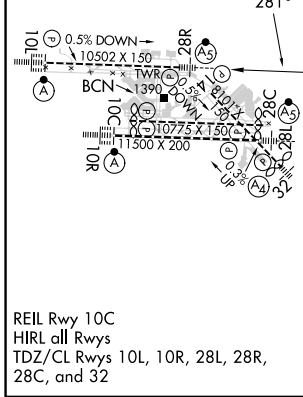
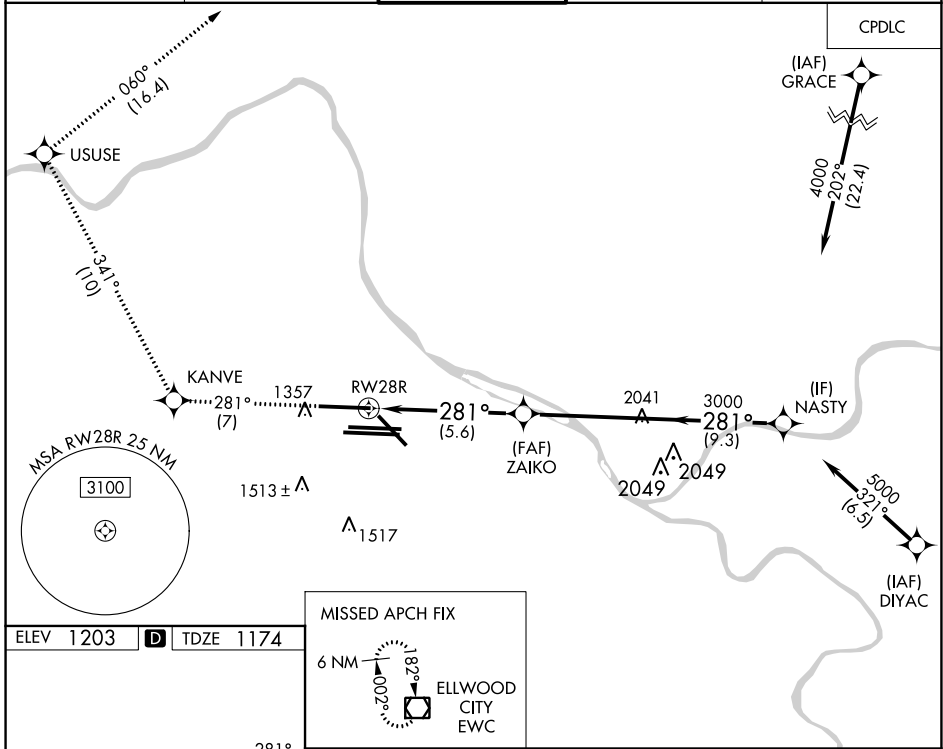
RNP AR APCH - GPS.

Simultaneous approach authorized. For uncompensated Baro-VNAV systems, procedure NA below -18°C or above 54°C. For inop ALS, increase RNP 0.30 all Cats visibility to 1 3/8 SM.

MALSR

MISSED APPROACH: Climb to 4000 on track 281° to KANVE and track 341° to USUSE and track 060° to EWC VOR/DME and hold.

D-ATIS ARR 127.25 DEP 135.9	PITTSBURGH APP CON 123.95 360.8	PITTSBURGH TOWER 128.3 291.7	GND CON SOUTH 121.9 348.6 NORTH 127.8 348.6	CLNC DEL 126.75 353.7
-------------------------------------------------	-------------------------------------------	----------------------------------------	-----------------------------------------------------------------	---------------------------------



4000	KANVE	USUSE	EWC	
tr 281°	tr 341°	tr 060°		
VGSI and RNAV glidepath not coincident (VGSI Angle 3.00/TCH 71).				
RW28R		ZAIKO	NASTY	
3000		3000	4000	
5.6 NM		9.3 NM		
CATEGORY	A	B	C	D
RNP 0.30 DA	1675/55		501 (500-1)	
AUTHORIZATION REQUIRED				

NE-4, 26 DEC 2024 to 23 JAN 2025

NE-4, 26 DEC 2024 to 23 JAN 2025