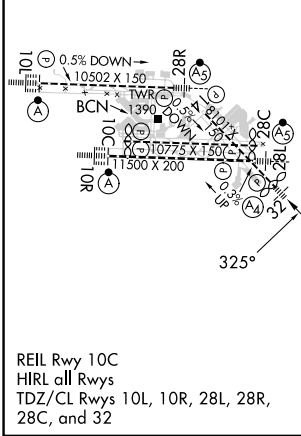
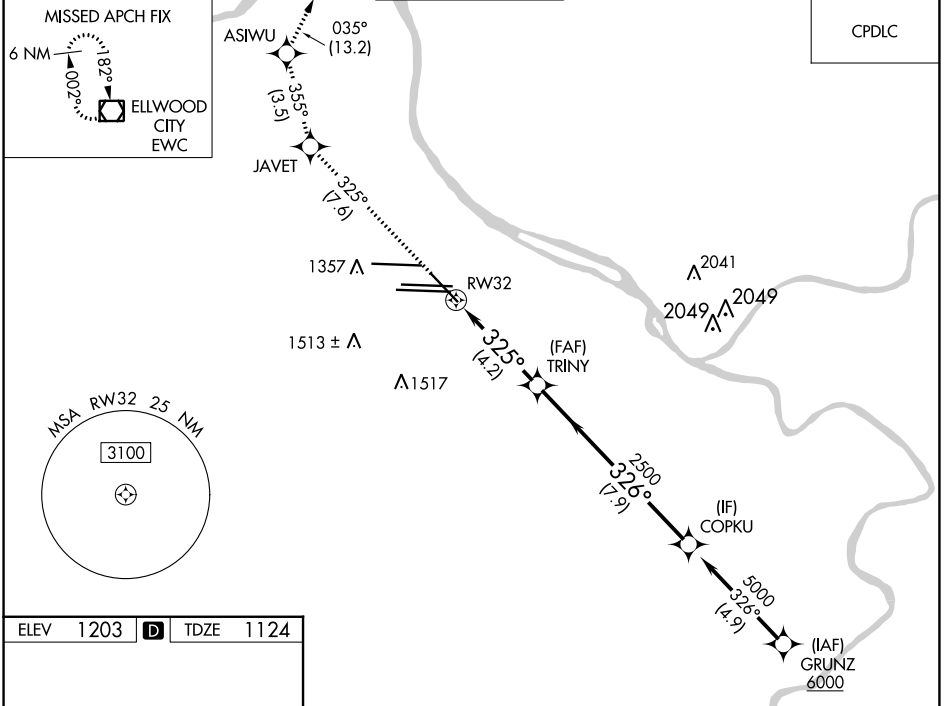


APP CRS 325°	Rwy ldg TDZE Apt Elev	7466 1124 1203
------------------------	-----------------------------	---

RNAV (RNP) Z RWY 32

PITTSBURGH INTL (PIT)

RNP AR APCH - GPS.		MALS	MISSED APPROACH: Climb to 4000 on track 325° to JAVET and track 355° to ASIWU and track 035° to EWC VOR/DME and hold.	
<p>▼ For uncompensated Baro-VNAV systems, procedure NA below -18°C (0°F) or above 54°C (130°F).</p>				
D-ATIS ARR 127.25 DEP 135.9	PITTSBURGH APP CON 123.95 360.8	PITTSBURGH TOWER 128.3 291.7	GND CON SOUTH 121.9 348.6 NORTH 127.8 348.6	CLNC DEL 126.75 353.7



ELEV 1203	D	TDZE 1124	
<p>REIL Rwy 10C HIRL all Rwys TDZ/CL Rwy 10L, 10R, 28L, 28R, 28C, and 32</p>			
<p>VGSI and RNAV glidepath not coincident (VGSI Angle 3.00/TCH 72).</p>			
4000	JAVET	ASIWU	EWC
fr 325°	tr 355°	tr 035°	
RWY 32		TRINY	COPKU
2500		2500	5000
325°		326°	GP 3.00° TCH 37
4.2 NM		7.9 NM	
CATEGORY	A	B	C
RNP 0.30 DA	1503/40		379 (300-¾)
AUTHORIZATION REQUIRED			

NE-4, 26 DEC 2024 to 23 JAN 2025

NE-4, 26 DEC 2024 to 23 JAN 2025