

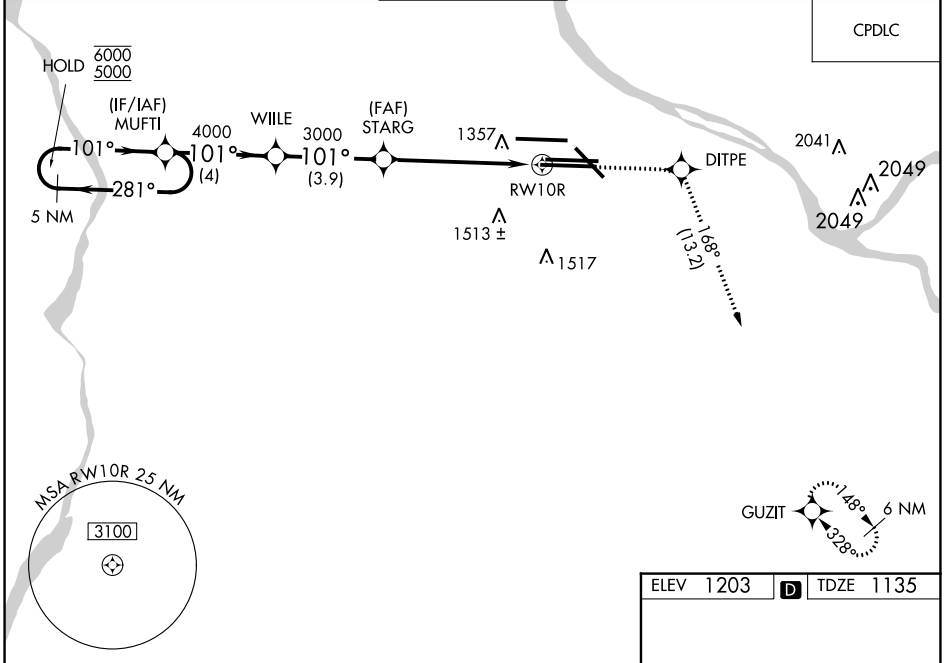
WAAS CH <b>86226</b> <b>W10D</b>	APP CRS <b>101°</b>	Rwy Idg <b>11492</b> TDZE <b>1135</b> Apt Elev <b>1203</b>
--	------------------------	--

# RNAV (GPS) Y RWY 10R

PITTSBURGH INTL (PIT)

RNP APCH - GPS.	ALSF-2	MISSED APPROACH: Climb to 4000 direct DITPE and right turn on track 168° to GUZIT and hold.
<p><b>⚠</b> For uncompensated Baro-VNAV systems, LNAV/VNAV NA below -17°C or above 54°C. Simultaneous approach authorized. LNAV procedure NA during simultaneous operations. Use of FD or AP required during simultaneous operations.</p>		

D-ATIS ARR <b>127.25</b> DEP <b>135.9</b>	PITTSBURGH APP CON <b>123.95 360.8</b>	PITTSBURGH TOWER <b>128.3 291.7</b>	GND CON SOUTH <b>121.9 348.6</b> NORTH <b>127.8 348.6</b>	CLNC DEL <b>126.75 353.7</b>
---	---	--	---	---------------------------------

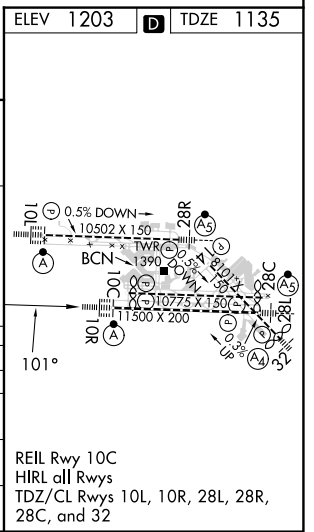


VGSI and RNAV glidepath not coincident (VGSI Angle 3.00/TCH 71).

5 NM Holding Pattern

GP 3.00° TCH 51

CATEGORY	A	B	C	D
LPV DA		1335/18	200 (200-1/2)	
LNAV/VNAV DA		1658/55	523 (500-1)	
LNAV MDA	1660/24	525 (500-1/2)	1660/55	525 (500-1)
<b>C</b> CIRCLING	1700-1	497 (500-1)	1880-2 677 (700-2)	1880-2 1/4 677 (700-2 1/4)



NE-4, 26 DEC 2024 to 23 JAN 2025

NE-4, 26 DEC 2024 to 23 JAN 2025