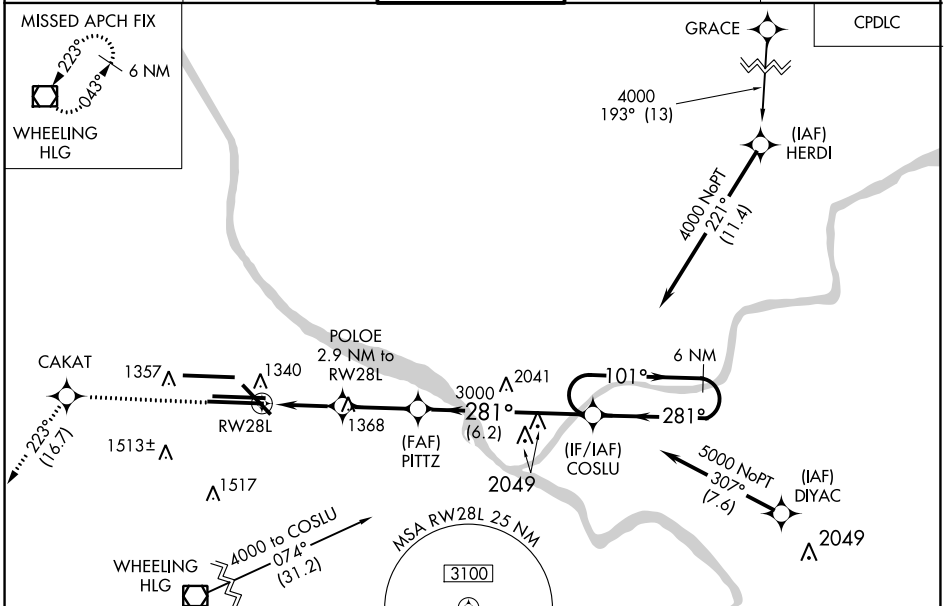


WAAS CH 97326 W28B	APP CRS 281°	Rwy Idg TDZE Apt Elev	11500 1125 1203
--	------------------------	-----------------------------	--

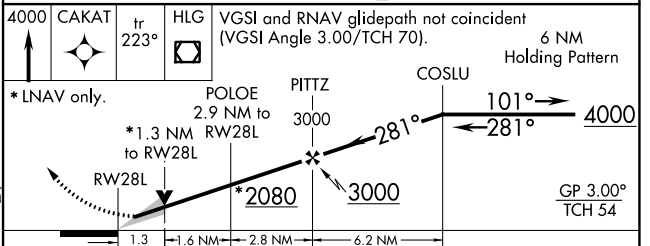
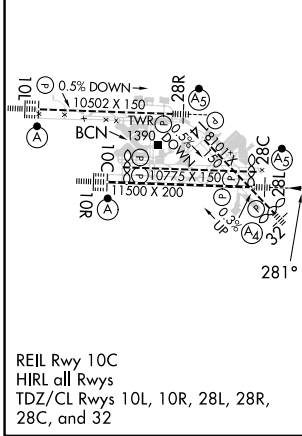
RNAV (GPS) Y RWY 28L

PITTSBURGH INTL (PIT)

RNP APCH - GPS		MALSR		MISSED APPROACH: Climb to 4000 direct CAKAT and on track 223° to HLG VOR/DME and hold.	
For uncompensated Baro-VNAV systems, LNAV/VNAV NA below -18°C or above 54°C. For inop ALS, increase LNAV Cats C/D visibility to 1 3/8 SM. LNAV procedure NA during simultaneous operations. Use of FD or AP required during simultaneous operations.					
D-ATIS ARR 127.25 DEP 135.9	PITTSBURGH APP CON 123.95 360.8	PITTSBURGH TOWER 128.3 291.7	GND CON SOUTH 121.9 348.6 NORTH 127.8 348.6	CLNC DEL 126.75 353.7	



ELEV 1203	D	TDZE 1125
-----------	----------	-----------



GP 3.00° TCH 54				
6 NM Holding Pattern				
* LNAV only.				
POLOE 2.9 NM to RWY 28L				
* 1.3 NM to RWY 28L				
* 2080				
* 3000				
1.3	1.6 NM	2.8 NM	6.2 NM	
CATEGORY	A	B	C	D
LPV DA		1325/18	200 (200-1/2)	
LNAV/VNAV DA		1549/40	424 (400-3/4)	
LNAV MDA	1600/24	475 (400-1/2)	1600/50	475 (400-1)
C CIRCLING	1700-1	497 (500-1)	1880-2 677 (700-2)	1880-2 1/4 677 (700-2 1/4)

NE-4, 26 DEC 2024 to 23 JAN 2025

NE-4, 26 DEC 2024 to 23 JAN 2025