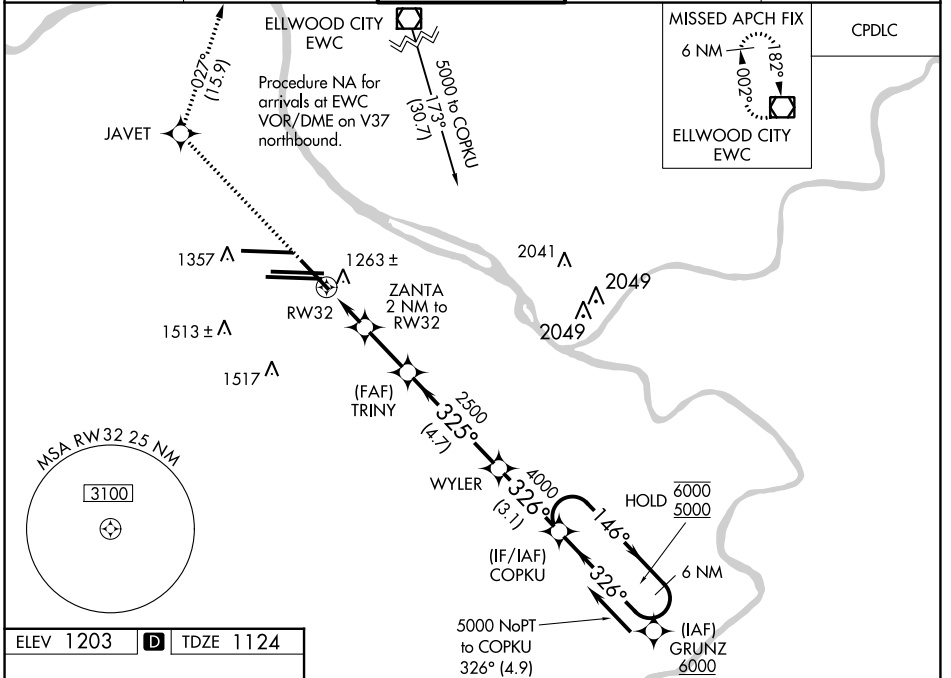


WAAS CH <b>70326</b> <b>W32A</b>	APP CRS <b>325°</b>	Rwy Idg TDZE Apt Elev	<b>7466</b> <b>1124</b> <b>1203</b>
--	------------------------	-----------------------------	---

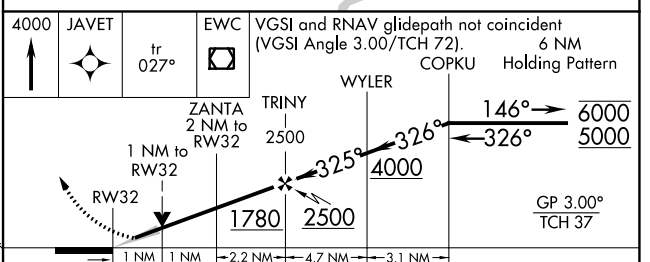
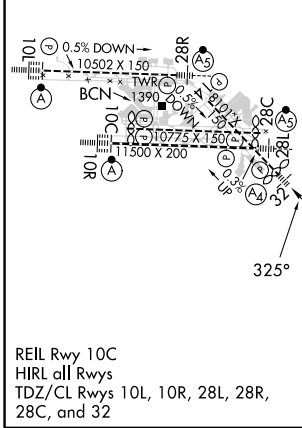
# RNAV (GPS) Y RWY 32

PITTSBURGH INTL (PIT')

RNP APCH - GPS.		MALS A4	MISSED APPROACH: Climb to 4000 direct JAVET and on track 027° to EWC VOR/DME and hold.	
▼ For uncompensated Baro-VNAV systems, LNAV/VNAV NA below -18°C (0°F) or above 54°C (130°F). Inop table does not apply to LPV. For inop ALS, increase LNAV/VNAV all Cats visibility to RVR 4500. ▲				
D-ATIS ARR <b>127.25</b> DEP <b>135.9</b>	PITTSBURGH APP CON <b>123.95 360.8</b>	PITTSBURGH TOWER <b>128.3 291.7</b>	GND CON SOUTH <b>121.9 348.6</b> NORTH <b>127.8 348.6</b>	CLNC DEL <b>126.75 353.7</b>



ELEV <b>1203</b>	<b>D</b>	TDZE <b>1124</b>
------------------	----------	------------------



CATEGORY	A	B	C	D
LPV DA		1324/40	200 (200-¾)	
LNAV/VNAV DA		1438/40	314 (300-¾)	
LNAV MDA	1520/40	396 (400-¾)	1520/45	396 (400-¾)
<b>C</b> CIRCLING	1700-1	497 (500-1)	1880-2 677 (700-2)	1880-2 ¼ 677 (700-2 ¼)

NE-4, 26 DEC 2024 to 23 JAN 2025

NE-4, 26 DEC 2024 to 23 JAN 2025