

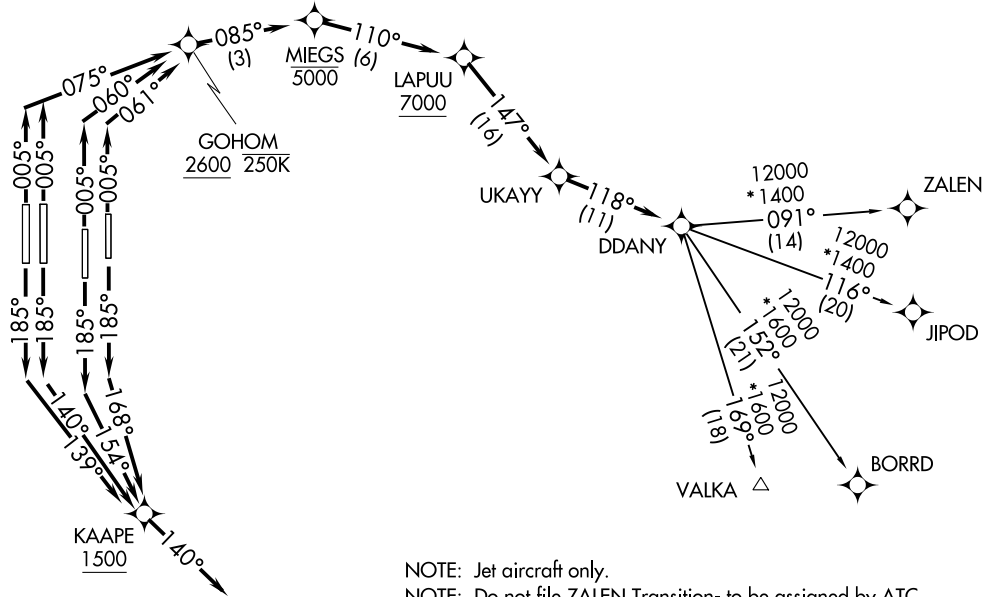
RNAV 1 - DME/DME/IRU or GPS.
RADAR required.

TOP ALTITUDE:
7000

TAKEOFF MINIMUMS

Rwys 17L/R, 18L/R, 35L/R, 36L/R: Standard
with minimum climb of 500' per NM to 600.

D-ATIS DEP
120.525
CLNC DEL
134.7 341.7
CPDLC
GND CON
126.4 (East)
121.8 (West)
ORLANDO TOWER
118.45 253.5
(Rwys 17L-35R, 17R-35L)
124.3 253.5
(Rwys 18L-36R, 18R-36L)
ORLANDO DEP CON
124.8 307.0



NOTE: Jet aircraft only.

NOTE: Do not file ZALEN Transition- to be assigned by ATC.

(NARRATIVE ON FOLLOWING PAGE)

NOTE: Chart not to scale.

DDANY THREE DEPARTURE (RNAV)
(DDANY3.DDANY) 19MAY22

ORLANDO, FLORIDA
ORLANDO INTL (MCO)

(DDANY3.DDANY) 22139
DDANY THREE DEPARTURE (RNAV)

ORLANDO INTL (MCO)
ORLANDO, FLORIDA

AL-571 (FAA)

DDANY THREE DEPARTURE (RNAV)



DEPARTURE ROUTE DESCRIPTION SEE ADDITIONAL REQUIREMENTS ON AAUP

TAKEOFF RUNWAY 17L: Climb on heading 185° to intercept course 168° to cross KAAPE at or above 1500, then on track 140°, for vectors to UKAYY, thence

TAKEOFF RUNWAY 17R: Climb on heading 185° to intercept course 154° to cross KAAPE at or above 1500, then on track 140°, for vectors to UKAYY, thence

TAKEOFF RUNWAY 18L: Climb on heading 185° to intercept course 140° to cross KAAPE at or above 1500, then on track 140°, for vectors to UKAYY, thence

TAKEOFF RUNWAY 18R: Climb on heading 185° to intercept course 139° to cross KAAPE at or above 1500, then on track 140°, for vectors to UKAYY, thence

TAKEOFF RUNWAY 35L: Climb on heading 005° to intercept course 060° to cross GOHOM at or above 2600 and at or below 250K, then on track 085° to cross MIEGS at or below 5000, then on track 110° to cross LAPUU at or above 7000, then on track 147° to UKAYY, thence

TAKEOFF RUNWAY 35R: Climb on heading 005° to intercept course 061° to cross GOHOM at or above 2600 and at or below 250K, then on track 085° to cross MIEGS at or below 5000, then on track 110° to cross LAPUU at or above 7000, then on track 147° to UKAYY, thence

TAKEOFF RUNWAYS 36L/R: Climb on heading 005° to intercept course 075° to cross GOHOM at or above 2600 and at or below 250K, then on track 085° to cross MIEGS at or below 5000, then on track 110° to cross LAPUU at or above 7000, then on track 147° to UKAYY, thence

. . . . on track 118° to DDANY. Maintain 7000, expect filed altitude 10 minutes after departure.

BORRD TRANSITION (DDANY3.BORRD)

JIPOD TRANSITION (DDANY3.JIPOD)

VALKA TRANSITION (DDANY3.VALKA)

ZALEN TRANSITION (DDANY3.ZALEN)

SE-3, 26 DEC 2024 to 23 JAN 2025

SE-3, 26 DEC 2024 to 23 JAN 2025