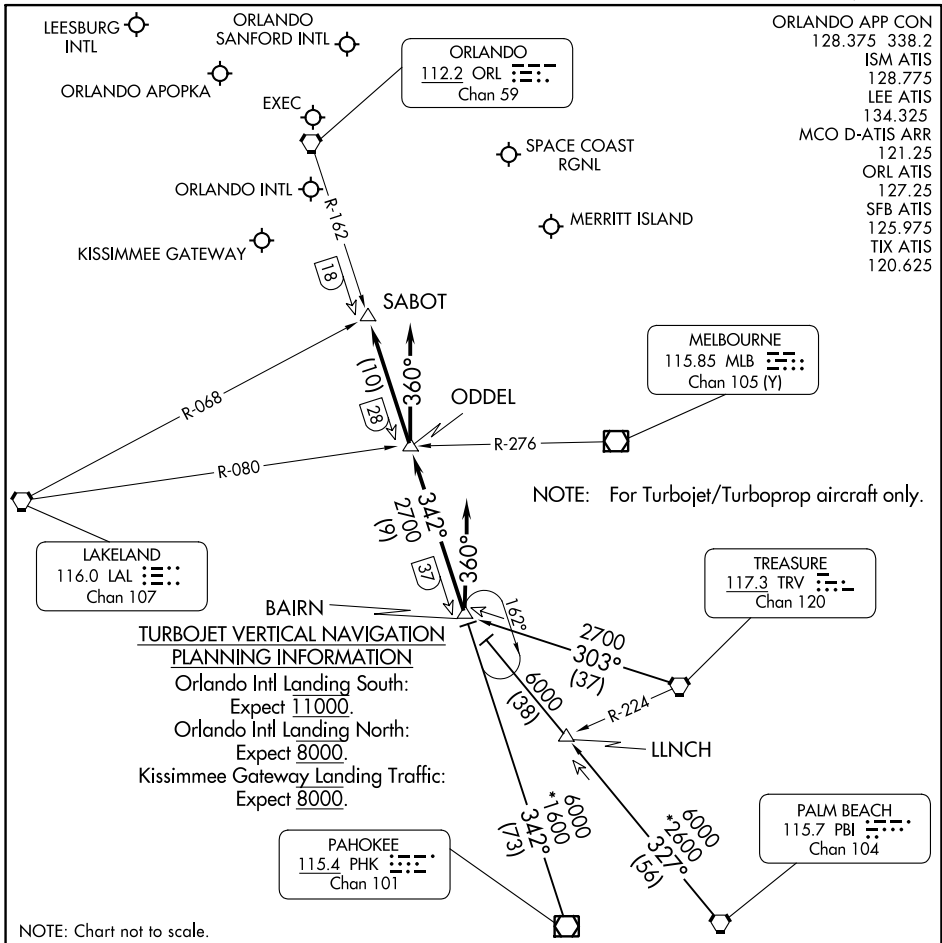


(BAIRN.GOOFY7) 24081

AL-571 (FAA)

# GOOFY SEVEN ARRIVAL

ORLANDO, FLORIDA



ORLANDO APP CON  
128.375 338.2  
ISM ATIS  
128.775  
LEE ATIS  
134.325  
MCO D-ATIS ARR  
121.25  
ORL ATIS  
127.25  
SFB ATIS  
125.975  
TIX ATIS  
120.625

MELBOURNE  
115.85 MLB  
Chan 105 (Y)

LAKELAND  
116.0 LAL  
Chan 107

TREASURE  
117.3 TRV  
Chan 120

PAHOKEE  
115.4 PHK  
Chan 101

PALM BEACH  
115.7 PBI  
Chan 104

**TURBOJET VERTICAL NAVIGATION  
PLANNING INFORMATION**  
Orlando Intl Landing South:  
Expect 11000.  
Orlando Intl Landing North:  
Expect 8000.  
Kissimmee Gateway Landing Traffic:  
Expect 8000.

NOTE: For Turbojet/Turboprop aircraft only.

NOTE: Chart not to scale.

## ARRIVAL ROUTE DESCRIPTION

PAHOKEE TRANSITION (PHK.GOOFY7): From over PHK VOR/DME on PHK R-342 to BAIRN INT.

Thence. . .

PALM BEACH TRANSITION (PBI.GOOFY7): From over PBI VORTAC on PBI R-327 to BAIRN INT.

Thence. . .

TREASURE TRANSITION (TRV.GOOFY7): From over TRV VORTAC on TRV R-303 to BAIRN INT.

Thence. . .

### ORLANDO INTL:

. . . Rwy 17/18: From over BAIRN INT on ORL VORTAC R-162 to ODDEL INT. Depart ODDEL INT heading 360° for vector to final approach course.

. . . Rwy 35/36: Depart BAIRN INT heading 360° for vector to final approach course.

LEESBURG INTL: . . . From over BAIRN INT on ORL VORTAC R-162 to SABOT INT. Expect RADAR vectors to the airport.

ALL OTHER AIRPORTS: . . . From over BAIRN INT on ORL VORTAC R-162 to SABOT INT.

Expect RADAR vectors to final approach course.

# GOOFY SEVEN ARRIVAL

ORLANDO, FLORIDA

(BAIRN.GOOFY7) 27APR17

SE-3, 26 DEC 2024 to 23 JAN 2025

SE-3, 26 DEC 2024 to 23 JAN 2025