

ILS RWY 17R (CAT II)

ORLANDO INTL (MCO)

LOC/DME I-DIZ	APP CRS	Rwy Idg	10000
111.75	185°	TDZE	90
Chan 54(Y)		Apt Elev	96

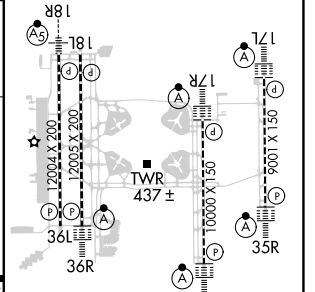
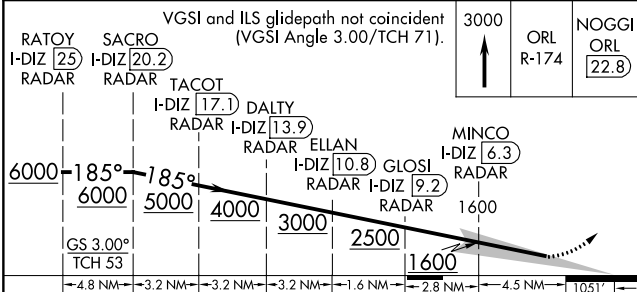
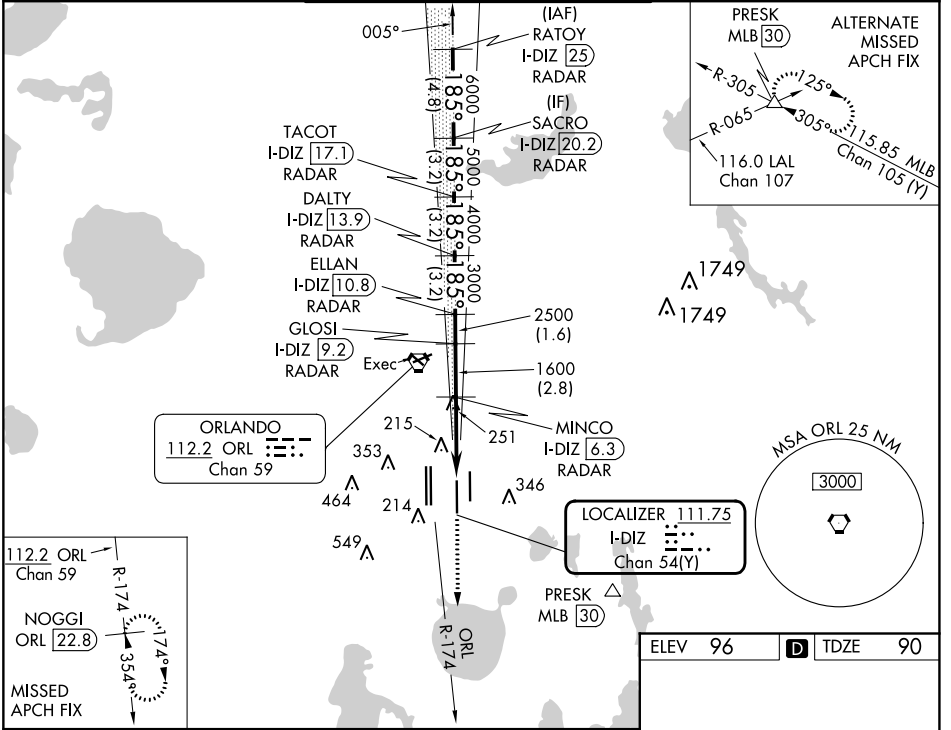
RADAR required for procedure entry. DME or RADAR required.

Simultaneous approach authorized. When using alternate missed approach, simultaneous approach NA. Bright lights on highway midway between Rwy 17L and Rwy 17R may be mistaken for runway lights.

ALSIF-2

MISSED APPROACH: Climb to 3000 on ORL VORTAC R-174 to NOGGI/ ORL 22.8 DME and hold.

D-ATIS	ORLANDO APP CON	ORLANDO TOWER	GND CON	CLNC DEL	CPDLC
ARR 121.25	124.8 307.0	118.45 253.5 (Rwys 17L-35R, 17R-35L)	126.4 (East)	134.7	
DEP 120.525		124.3 253.5 (Rwys 18L-36R, 18R-36L)	121.8 (West)	341.7	



S-ILS 17R

RA 104/12 100 DA 190

CATEGORY II ILS - SPECIAL AIRCREW & AIRCRAFT CERTIFICATION REQUIRED

HIRL all Rwys
REIL Rwy 36L
TDZ/CL Rwys 17L/R, 18R, 35L/R and 36R

SE-3, 26 DEC 2024 to 23 JAN 2025

SE-3, 26 DEC 2024 to 23 JAN 2025