


# ILS or LOC RWY 17L

ORLANDO INTL (MCO)

LOC/DME I-ARK <b>110.95</b> Chan <b>46(Y)</b>	APP CRS <b>185°</b>	Rwy Idg <b>9001</b>
		TDZE <b>90</b>
		Apt Elev <b>96</b>

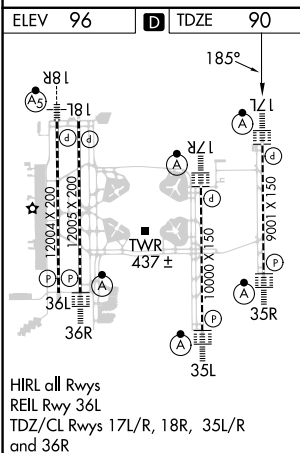
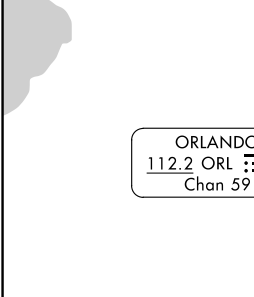
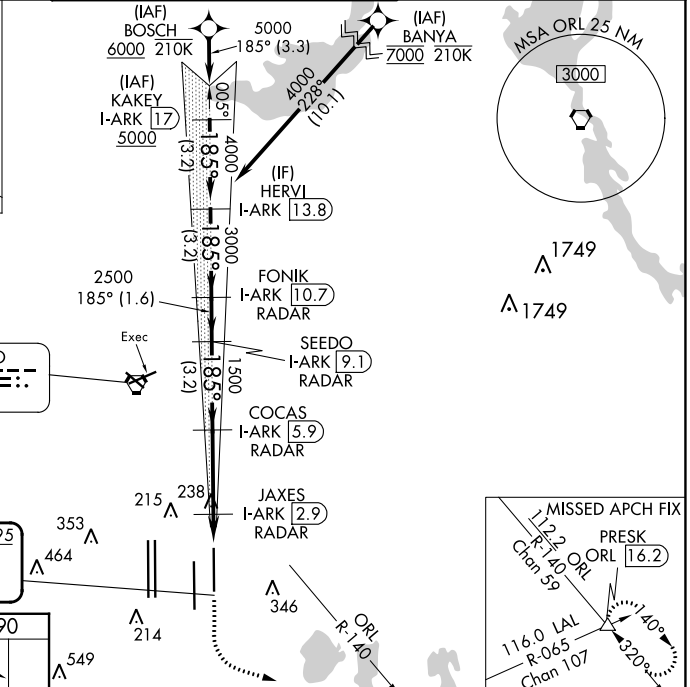
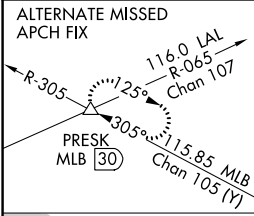
RNAV 1-DME/DME/IRU or GPS or RADAR required for procedure entry. DME or RADAR required.

ALSF-2 

MISSED APPROACH: Climb to 500 then climbing left turn to 3000 on heading 100° and ORL VORTAC R-140 to PRESK INT/ORL 16.2 DME and hold, continue climb-in-hold to 3000.

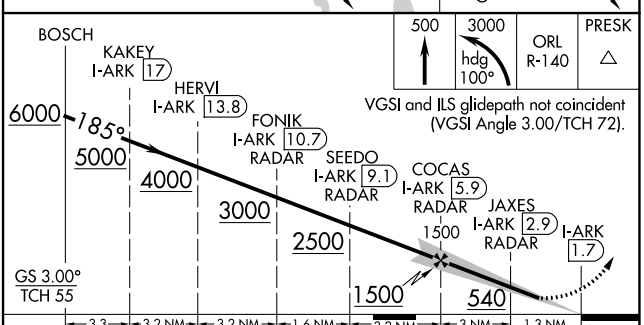
⚠ Bright lights on highway midway between Rwy 17L and Rwy 17R may be mistaken for runway lights. Simultaneous approach authorized. For inop ALS, increase S-LOC 17L Cats C/D visibility to RVR 6000.

D-ATIS ARR <b>121.25</b> DEP <b>120.525</b>	ORLANDO APP CON <b>124.8 307.0</b>	ORLANDO TOWER <b>118.45 253.5</b> (Rwys 17L-35R, 17R-35L) <b>124.3 253.5</b> (Rwys 18L-36R, 18R-36L)	GND CON <b>126.4</b> (East) <b>121.8</b> (West)	CLNC DEL <b>134.7</b> <b>341.7</b>	CPDLC
---	---------------------------------------	--	---	--	-------



HIRL all Rwys  
REIL Rwy 36L  
TDZ/CL Rwys 17L/R, 18R, 35L/R and 36R

FAF to MAP 4.3 NM					
Knots	60	90	120	150	180
Min:Sec	4:18	2:52	2:09	1:43	1:26



CATEGORY	A	B	C	D
S-ILS 17L	290/18 200 (200-1/2)			
S-LOC 17L	500/24	410 (500-1/2)	500/40	410 (500-3/4)
CIRCLING	740-1 644 (700-1)		740-134	740-2
			644 (700-134)	644 (700-2)

SE-3, 26 DEC 2024 to 23 JAN 2025

SE-3, 26 DEC 2024 to 23 JAN 2025