

JEEMY THREE DEPARTURE (RNAV)

ORLANDO, FLORIDA

TOP ALTITUDE:
RWY 17L/R, RWY 18L/R: 7000
RWY 35L/R, RWY 36L/R: 16000

D-ATIS DEP 120.525
 CLNC DEL 134.7 341.7
 CPDLC
 GND CON 126.4 (East)
 121.8 (West)
 ORLANDO TOWER 118.45 253.5
 (Rwys 17L-35R, 17R-35L) 124.3 253.5
 (Rwys 18L-36R, 18R-36L)
 ORLANDO DEP CON 124.8 307.0 (North)
 120.15 284.7 (South)

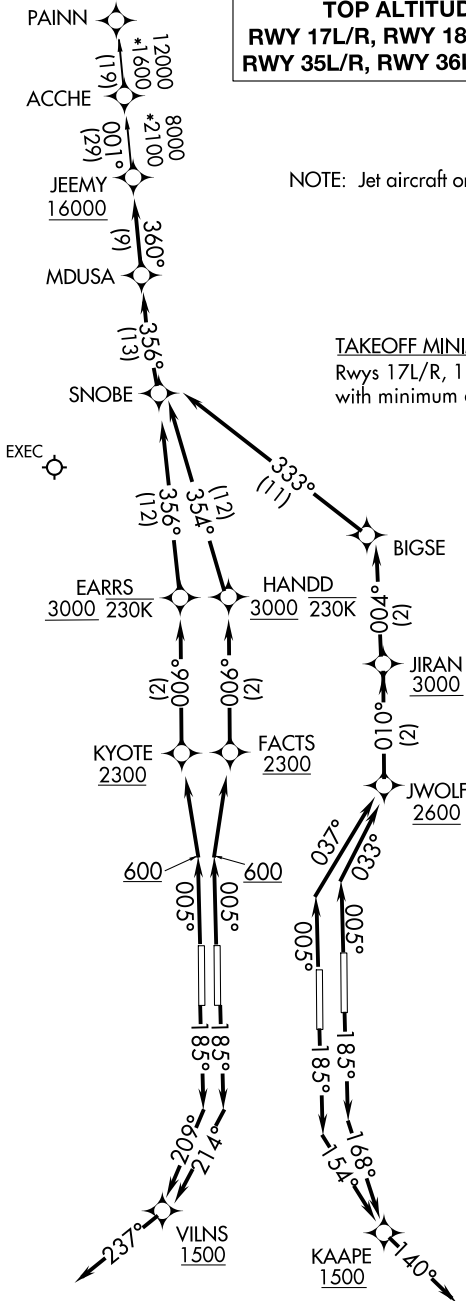
NOTE: Jet aircraft only.

TAKEOFF MINIMUMS

Rwys 17L/R, 18L/R, 35L/R, 36L/R: Standard with minimum climb of 500' per NM to 600.

RNAV 1 - DME/DME/IRU or GPS.

RADAR required.



(NARRATIVE ON FOLLOWING PAGE)

NOTE: Chart not to scale.

JEEMY THREE DEPARTURE (RNAV)

(JEEMY3.JEEMY) 19MAY22

ORLANDO, FLORIDA
ORLANDO INTL (MCO)

SE-3, 26 DEC 2024 to 23 JAN 2025

SE-3, 26 DEC 2024 to 23 JAN 2025

JEEY THREE DEPARTURE (RNAV)



DEPARTURE ROUTE DESCRIPTION

SEE ADDITIONAL REQUIREMENTS ON AAUP

TAKEOFF RUNWAY 17L: Climb on heading 185° to intercept course 168° to cross KAAPE at or above 1500, then on track 140°, for vectors to MDUSA, thence. . . .

TAKEOFF RUNWAY 17R: Climb on heading 185° to intercept course 154° to cross KAAPE at or above 1500, then on track 140°, for vectors to MDUSA, thence. . . .

TAKEOFF RUNWAY 18L: Climb on heading 185° to intercept course 214° to cross VILNS at or above 1500, then on track 237°, for vectors to MDUSA, thence. . . .

TAKEOFF RUNWAY 18R: Climb on heading 185° to intercept course 209° to cross VILNS at or above 1500, then on track 237°, for vectors to MDUSA, thence. . . .

TAKEOFF RUNWAY 35L: Climb on heading 005° to intercept course 037° to cross JWOLF at or above 2600, then on track 010° to cross JIRAN at or above 3000, then on track 004° to BIGSE, then on track 333° to SNOBE, then on track 356° to MDUSA, thence. . . .

TAKEOFF RUNWAY 35R: Climb on heading 005° to intercept course 033° to cross JWOLF at or above 2600, then on track 010° to cross JIRAN at or above 3000, then on track 004° to BIGSE, then on track 333° to SNOBE, then on track 356° to MDUSA, thence. . . .

TAKEOFF RUNWAY 36L: Climb on heading 005° to 600, then direct KYOTE to cross at or above 2300, then on track 006° to cross EARRS at or above 3000 and at or below 230K, then on track 356° to SNOBE, then on track 356° to MDUSA, thence. . . .

TAKEOFF RUNWAY 36R: Climb on heading 005° to 600, then direct FACTS to cross at or above 2300, then on track 006° to cross HANDD at or above 3000 and at or below 230K, then on track 354° to SNOBE, then on track 356° to MDUSA, thence. . . .

. . . . on track 360° to cross JEEY at or above 16000, then on assigned transition, RUNWAY 17L/R, 18L/R maintain 7000, RUNWAY 35L/R, 36L/R maintain 16000, expect filed altitude 10 minutes after departure.

ALL AIRCRAFT: ATC climb gradients: If unable to accept climb rates advise ATC prior to taxi. RUNWAY 35R: 566 FT/NM to 2600, RUNWAY 36L: 637 FT/NM to 2300, RUNWAY 36R: 621 FT/NM to 2300.

PAINN TRANSITION (JEEY3.PAINN)

SE-3, 26 DEC 2024 to 23 JAN 2025

SE-3, 26 DEC 2024 to 23 JAN 2025