

(PRICY.PRICY4) 31OCT24

PRICY FOUR ARRIVAL (RNAV) Transition Routes

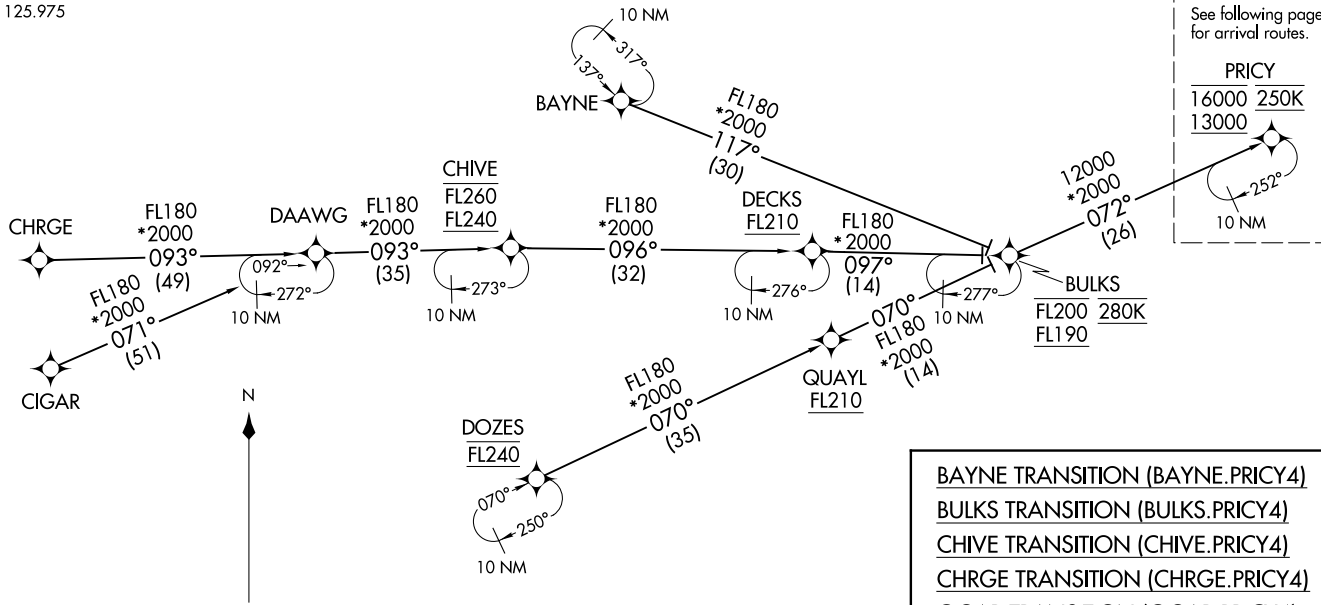
ORLANDO, FLORIDA

ORLANDO APP CON
134.05 339.8
ISM ATIS
128.775
LEE ATIS
134.325
MCO D-ATIS ARR
121.25
MLB ATIS
132.55
ORL ATIS
127.25
SFB ATIS
125.975

NOTE: Jet aircraft only.
NOTE: Do not file BULKS, CHIVE or DOZES Transitions - to be assigned by ATC.
NOTE: Landing south use Rwy 18R Transition, Landing north use Rwy 36L Transition.

RNAV 1 - DME/DME/IRU or GPS.
CHRG Transition - RNAV 1-GPS.
CIGAR Transition - RNAV 1-GPS.

RADAR required.



NOTE: Chart not to scale.

(CONTINUED ON FOLLOWING PAGE)

- BAYNE TRANSITION (BAYNE.PRICY4)
- BULKS TRANSITION (BULKS.PRICY4)
- CHIVE TRANSITION (CHIVE.PRICY4)
- CHRG TRANSITION (CHRG.PRICY4)
- CIGAR TRANSITION (CIGAR.PRICY4)
- DOZES TRANSITION (DOZES.PRICY4)

(PRICY.PRICY4) 24305

AL-571 (FAA)

ORLANDO, FLORIDA

PRICY FOUR ARRIVAL (RNAV) Arrival Routes

ORLANDO, FLORIDA

ORLANDO APP CON
 134.05 339.8
 ISM ATIS
 128.775
 LEE ATIS
 134.325
 MCO D-ATIS ARR
 121.25
 MLB ATIS
 132.55
 ORL ATIS
 127.25
 SFB ATIS
 125.975

LEESBURG INTL



LYENS
 5000 210K
 KMCO Ldg Rwys 17L/R, 18L/R

ORLANDO SANFORD INTL



HAMMY



EXEC



DVOLA



ORLANDO INTL



GIRAF
 8000 220K

RNAV 1 - DME/DME/IRU or GPS.
 CHRG Transition - RNAV 1-GPS.
 CIGAR Transition - RNAV 1-GPS.

RADAR required.

- NOTE: Jet aircraft only.
 NOTE: Do not file BULKS, CHIVE or DOZES Transitions - to be assigned by ATC.
 NOTE: Landing south use Rwy 18R Transition, Landing north use Rwy 36L Transition.

ARHIP



KISSIMMEE GATEWAY



OTKEE
 11000

Ldg LEE/SFB/ISM/MLB/ORL

EXBAN



MELBOURNE ORLANDO INTL



PRICY
 16000 250K
 13000

BOCCE



JUMBA



AMADS
 9000

TAYYE

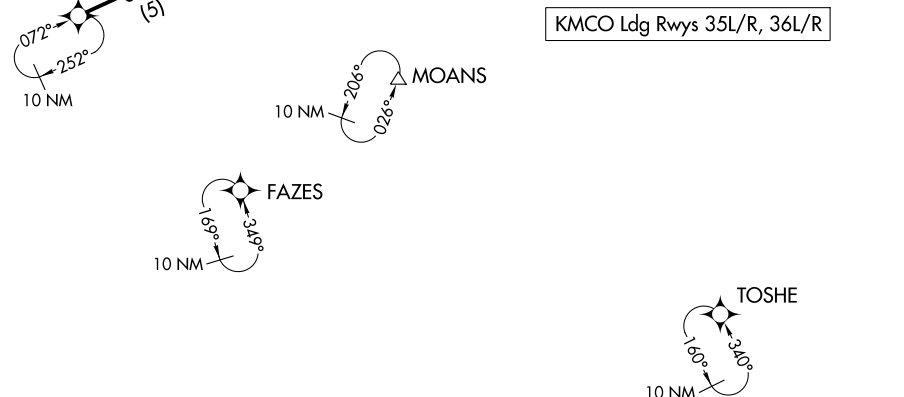


LORRA
 7000 210K

KMCO Ldg Rwys 35L/R, 36L/R

SE-3, 26 DEC 2024 to 23 JAN 2025

SE-3, 26 DEC 2024 to 23 JAN 2025



NOTE: Chart not to scale.

(CONTINUED ON FOLLOWING PAGE)

PRICY FOUR ARRIVAL (RNAV) Arrival Routes

ORLANDO, FLORIDA

ARRIVAL ROUTE DESCRIPTION

MCO: From PRICY on track 071° to BOCCE, then on track 068° to JUMBA.

LANDING MCO RUNWAYS 17L/R, 18L/R: From JUMBA on track 068° to cross TAYYE between 10000 and 12000, then on track 060° to ARHIP, then on track 006° to cross GIRAF at or above 8000 and at 220K, then on track 006° to DVOLA, then on track 006° to cross LYENS at 5000 and at 210K, then on track 006°. Expect RADAR vectors to final approach course.

LANDING MCO RUNWAYS 35L/R, 36L/R: From JUMBA on track 104° to cross AMADS at or below 9000, then on track 104° to cross LORRA at 7000 and at 210K, then on heading 096°. Expect RADAR vectors to final approach course.

LANDING LEE/SFB/ISM/MLB/ORL: From PRICY on track 071° to BOCCE, then on track 056° to cross OTKEE at 11000, then on track 056°. Expect RADAR vectors to final approach course.

SE-3, 26 DEC 2024 to 23 JAN 2025

SE-3, 26 DEC 2024 to 23 JAN 2025