

| | | |
|--|------------------------|--|
| WAAS CH 66012 W18A | APP CRS 185° | Rwy Idg 12004 TDZE 96 Apt Elev 96 |
|--|------------------------|--|

RNAV (GPS) RWY 18L

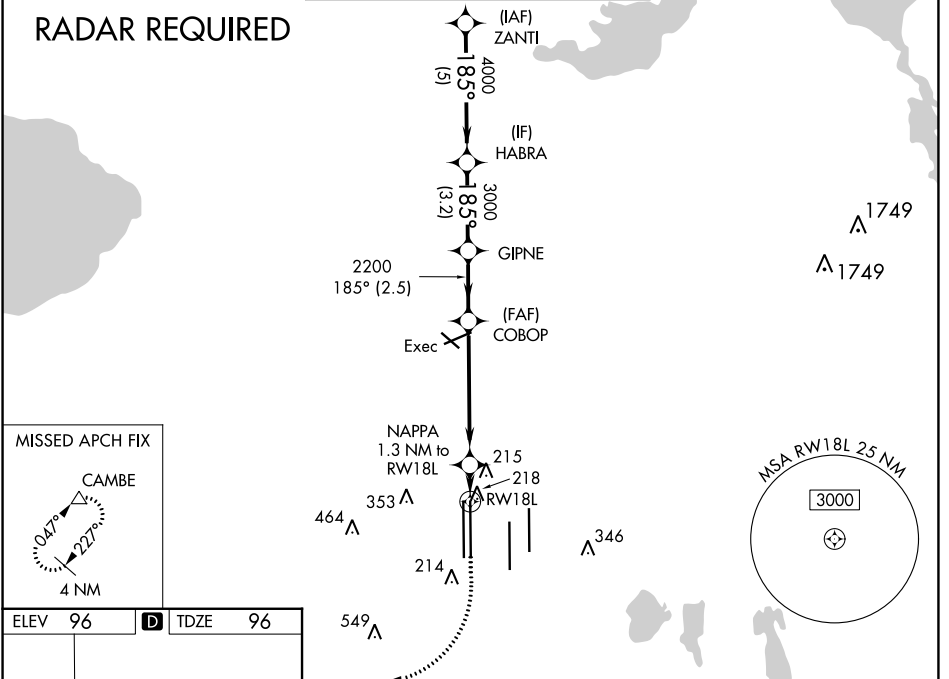
ORLANDO INTL (MCO)

▽ For uncompensated Baro-VNAV systems, LNAV/VNAV NA below -1°C (31°F) or above 54°C (130°F). DME/DME RNP-0.3 NA. Simultaneous approach authorized with Rwy 17L/R. LNAV procedure NA during simultaneous operations. Use of FD or AP providing RNAV track guidance required during simultaneous operations.

MISSED APPROACH: Climb to 500 then climbing right turn to 4000 direct CAMBE and hold, continue climb-in-hold to 4000.

| | | | | | |
|---|---------------------------------------|--|---|--|-------|
| D-ATIS ARR 121.25 DEP 120.525 | ORLANDO APP CON 124.8 307.0 | ORLANDO TOWER 118.45 253.5 (Rwys 17L-35R, 17R-35L) 124.3 253.5 (Rwys 18L-36R, 18R-36L) | GND CON 126.4 (East) 121.8 (West) | CLNC DEL 134.7 341.7 | CPDLC |
|---|---------------------------------------|--|---|--|-------|

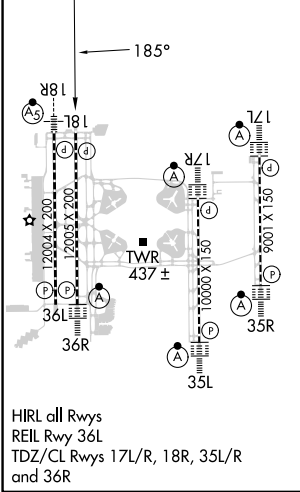
RADAR REQUIRED



SE-3, 26 DEC 2024 to 23 JAN 2025

SE-3, 26 DEC 2024 to 23 JAN 2025

| | | |
|----------------|----------|----------------|
| ELEV 96 | D | TDZE 96 |
|----------------|----------|----------------|



HIRL all Rwys
REIL Rwy 36L
TDZ/CL Rwys 17L/R, 18R, 35L/R
and 36R

| | | | | |
|--|--------|-------------|------------------------|-------------------------|
| VGSi and RNAV glidepath not coincident (VGSi Angle 3.00/TCH 71). | | | | |
| ZANTI | HABRA | GIPNE | COBOP | NAPPA 1.3 NM to RWY 18L |
| 4000 | 4000 | 3000 | 2200 | *560 |
| GP 3.00° | TCH 55 | | | |
| 5 NM | 3.2 NM | 2.5 NM | 5.2 NM | 1.3 NM |
| CATEGORY | A | B | C | D |
| LPV DA | | 296/40 | 200 (200-¾) | |
| LNAV/VNAV DA | | 398/50 | 302 (400-1) | |
| LNAV MDA | 480/55 | 384 (400-1) | 480/60 | 384 (400-1¼) |
| C CIRCLING | 740-1 | 644 (700-1) | 740-1¾ 644 (700-1¾) | 740-2 644 (700-2) |