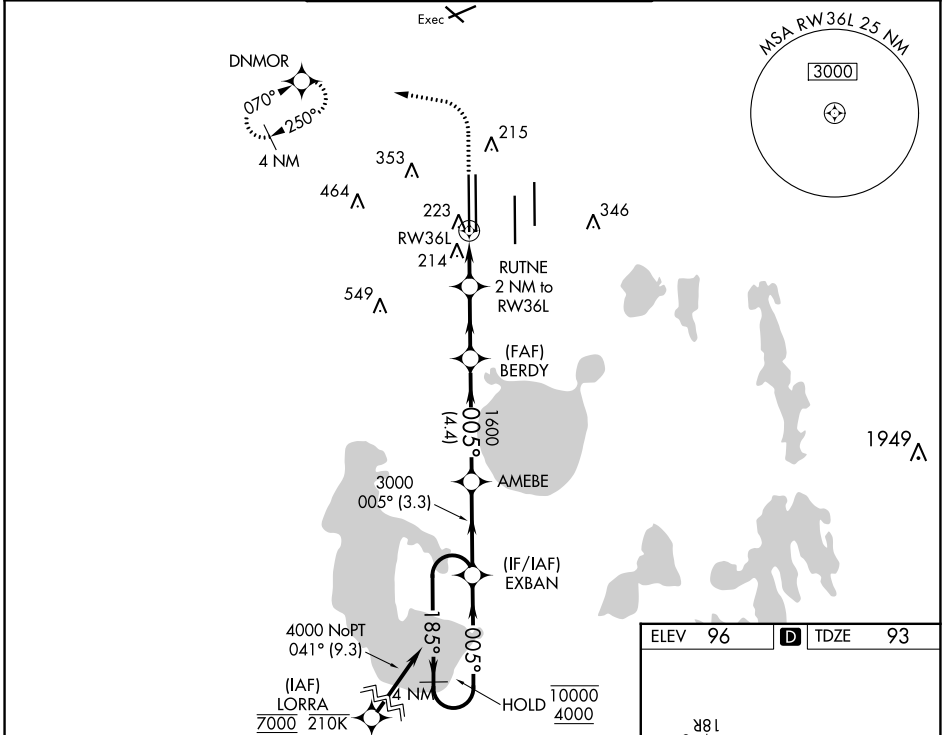


WAAS CH <b>82313</b> <b>W36B</b>	APP CRS <b>005°</b>	Rwy Idg <b>11621</b> TDZE <b>93</b> Apt Elev <b>96</b>
--	------------------------	--

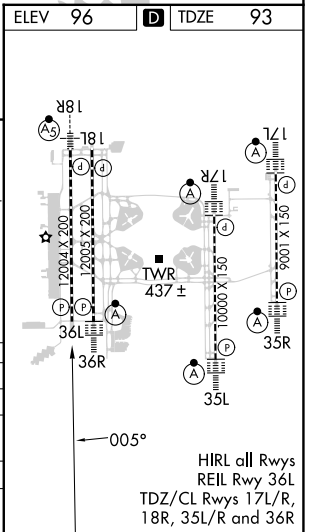
# RNAV (GPS) RWY 36L

ORLANDO INTL (MCO)

RNP APCH.		MISSED APPROACH: Climb to 500 then climbing left turn to 3000 direct DNMOR and hold, continue climb-in-hold to 3000.	
<p>Simultaneous approach authorized. LNAV procedure NA during simultaneous operations. Use of FD or AP required during simultaneous operations. For uncompensated Baro-VNAV systems, LNAV/VNAV NA below 1°C or above 54°C.</p>			
D-ATIS ARR <b>121.25</b> DEP <b>120.525</b>	ORLANDO APP CON <b>124.8 307.0</b>	ORLANDO TOWER <b>118.45 253.5</b> (Rwys 17L-35R, 17R-35L) <b>124.3 253.5</b> (Rwys 18L-36R, 18R-36L)	GND CON <b>126.4</b> (East) <b>121.8</b> (West)
		CLNC DEL <b>134.7</b>	CPDLC <b>341.7</b>



500	3000	DNMOR	VGSi and RNAV glidepath not coincident (VGSi Angle 3.00°/TCH 69°)		4 NM
		BERDY	AMEBE	EXBAN	Holding Pattern
		RUTNE 2 NM to RW36L	1600	185°	10000
		005°	1600	005°	4000
		1 NM	1 NM	2.6 NM	4.4 NM
		3.3 NM	3000	005°	10000
				GP 3.00°	TCH 55
CATEGORY	A	B	C	D	
LPV DA		293/40	200 (200-¾)		
LNAV/VNAV DA		406/45	313 (400-¾)		
LNAV MDA	480/55	387 (400-1)	480/60	387 (400-1½)	
CIRCLING	740-1	644 (700-1)	740-1¾	644 (700-1¾)	740-2
					644 (700-2)



SE-3, 26 DEC 2024 to 23 JAN 2025

SE-3, 26 DEC 2024 to 23 JAN 2025