

| | | |
|--|------------------------|---|
| WAAS CH 99403 W32A | APP CRS 316° | Rwy Idg 5502 TDZE 574 Apt Elev 583 |
|--|------------------------|---|

RNAV (GPS) RWY 32

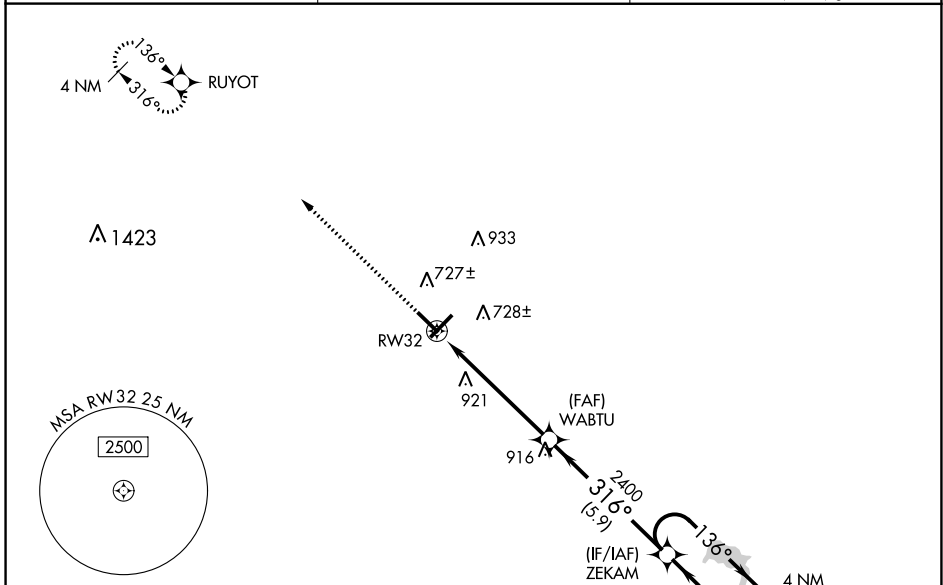
FREEMAN MUNI (SE.R)

RNP APCH - GPS.

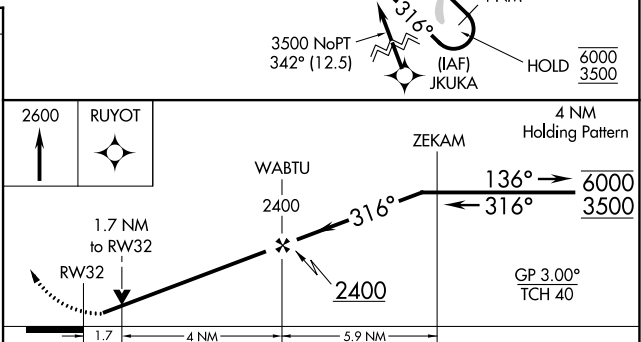
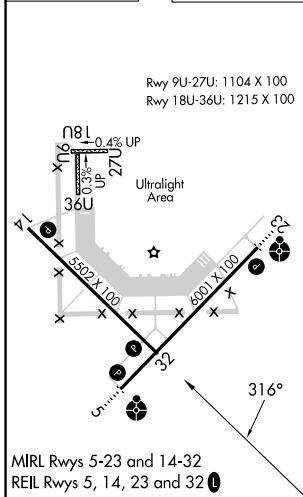
NA Baro-VNAV and VDP NA when using Louisville Muhammad Ali Intl altimeter setting. Rwy 32 helicopter visibility reduction below $\frac{3}{4}$ SM NA. For uncompensated Baro-VNAV systems, LNAV/VNAV NA below -16°C or above 54°C. When local altimeter setting not received, use Louisville Muhammad Ali Intl altimeter setting and increase LPV DA to 979 feet and all visibilities $\frac{1}{2}$ SM; increase LNAV/VNAV DA to 1230 feet and all visibilities $\frac{3}{8}$ SM; increase all MDAs 120 feet and LNAV visibility Cat C/D $\frac{3}{8}$ SM, and Circling visibility Cat C/D $\frac{1}{2}$ SM.

MISSED APPROACH:
Climb to 2600 direct RUYOT and hold.

| | | |
|--------------------------|--|-------------------------------|
| AWOS-3 119.425 | LOUISVILLE APP CON 132.075 327.0 | UNICOM 122.8 (CTAF) |
|--------------------------|--|-------------------------------|



| | |
|----------|----------|
| ELEV 583 | TDZE 574 |
|----------|----------|



| | | | | |
|-------------------|----------------------|-------------|-----------------------|-------------------------|
| CATEGORY | A | B | C | D |
| LPV DA | 859-1 285 (300-1) | | | |
| LNAV/VNAV DA | 1110-1½ 536 (600-1½) | | | |
| LNAV MDA | 1140-1 | 566 (600-1) | 1140-1½ | 566 (600-1½) |
| C CIRCLING | 1140-1 | 557 (600-1) | 1300-2 717 (800-2) | 1300-2¼ 717 (800-2¼) |

EC-2, 26 DEC 2024 to 23 JAN 2025

EC-2, 26 DEC 2024 to 23 JAN 2025