

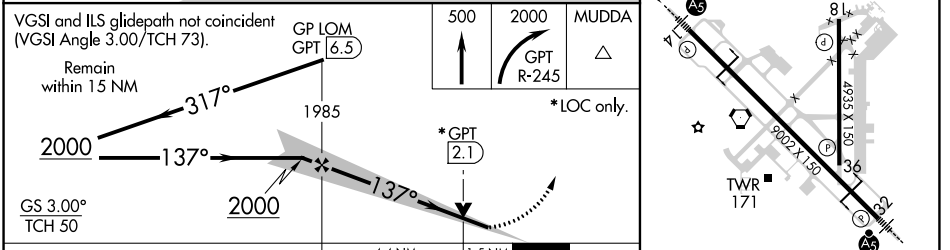
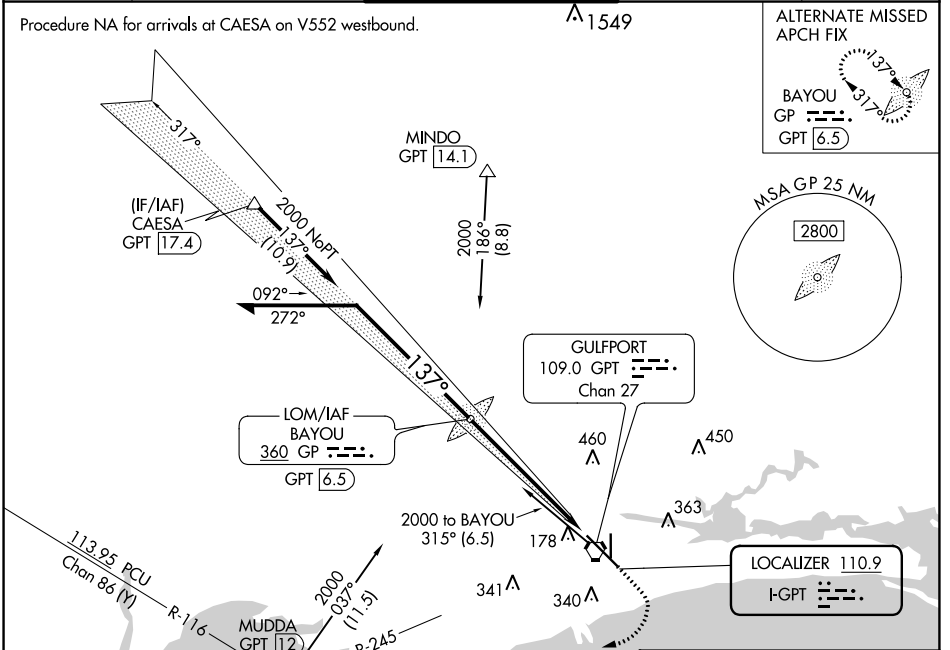
LOC I-GPT <b>110.9</b>	APP CRS <b>137°</b>	Rwy Idg TDZE Apt Elev	<b>9002</b> <b>27</b> <b>28</b>
---------------------------	------------------------	-----------------------------	---------------------------------------

# ILS Z or LOC Z RWY 14

GULFPORT-BILOXI INTL (GPT)

<p><b>⚠</b> For inop ALS, increase S-ILS 14 Cat E visibility to RVR 4000 and S-LOC 14 Cat E visibility to 1½ SM. <b>ASR</b> **RVR 1800 authorized with use of FD or AP or HUD to DA.</p>	<p><b>MALSR</b></p>	<p>MISSED APPROACH: Climb to 500 then climbing right turn to 2000 on GPT VORTAC R-245 to MUDDA INT/12 DME and hold.</p>
--	---------------------	---

ATIS <b>119.45</b>	GULFPORT APP CON * <b>127.5 254.25</b>	GULFPORT TOWER * <b>123.7 (CTAF) 0 339.8</b>	GND CON <b>120.4 348.6</b>	UNICOM <b>122.95</b>
-----------------------	---	---	-------------------------------	-------------------------



ELEV 28	TDZE 27					
<p>VGSI and ILS glidepath not coincident (VGSI Angle 3.00/TCH 73).</p> <p>Remain within 15 NM</p> <p>GS 3.00° TCH 50</p>	<p>GP LOM GPT 6.5</p>	<p>500</p>	<p>2000</p>	<p>MUDDA</p>	<p>* LOC only.</p>	<p>HIRL Rwy 14-32 <b>Ⓛ</b></p> <p>MIRL Rwy 18-36 <b>Ⓛ</b></p> <p>FAF to MAP 5.9 NM</p>
CATEGORY	A	B	C	D	E	
S-ILS 14**	227/24					200 (200-½)
S-LOC 14	560/24	533 (600-½)	560/55		533 (600-1)	
CIRCLING	560-1	640-1	820-2¼	820-2½	820-2¾	
	532 (600-1)	612 (700-1)	792 (800-2¼)	792 (800-2½)	792 (800-2¾)	
	Knots	60	90	120	150	180
	Min:Sec	5:54	3:56	2:57	2:22	1:58

SC-4, 26 DEC 2024 to 23 JAN 2025

SC-4, 26 DEC 2024 to 23 JAN 2025